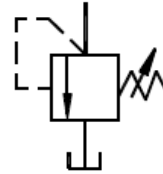


Upgrade to YCB-06/10



YCB	-06	-A	-G	-2	-20
Series Number	Valve Size	Max Adj. Pres. # Kgf/cm ²	Type of Mounting	Type of Operation	Design # Number
YCB: Cartridge type Relief Valve	06 10	A0 : 25 A : 50 B : 100 C : 200 D : 315 E : 400	None: Cartridge Type G: Sub Plate Type T: Threaded Type	1 : Adj. Screw 2 : Hand Knob	20

We are happy to announce a design upgrade to our cartridge type relief valves. The newer design valves will be designated 20D instead of 10D. Shipment will commence Mid-September.

Although the specs and mounting remain same, our commitment to continuous improvement has resulted in several changes to the components, significantly improving the reliability of these valves.