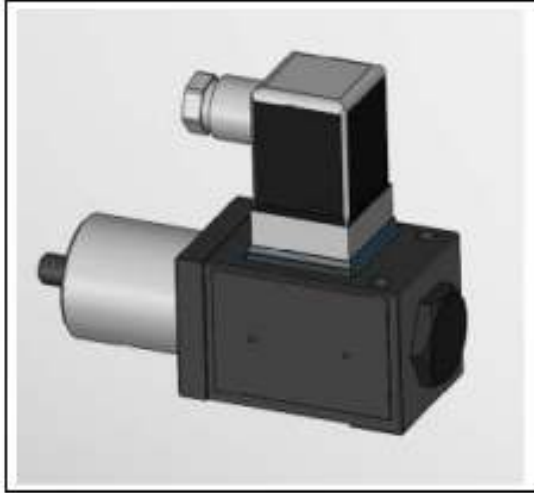


Product upgrade notice – YSG



We are happy to announce an upgrade to the hydro-electric pressure switch – YSG

The new design is designated '20'. While the 'form' or 'look' will be different, the upgraded version maintains mounting interchangeability and brings in improved reliability and ruggedness to one of our most dependable products.

F	YS	G	-A	-20
Special Seals	Series Number	Type of Mounting	Working Pressure Kgf/cm ²	Design Number *1
F: *2 Special Seals For Phosphate Ester Type Fluids. (Omit if not required)	YS: YIL Pressure Switch	G: Sub plate Mounting	A: 5~40 B: 12~100 C: 20~200 D: 30~350	20

The changeover will occur in a phased manner, with priority to OEM installations. The pressure switches are available off the shelf and can be ordered from any Yuken distributor or representative. Details are available in the 'NETWORK' section of the website while detailed specification sheet is available under the 'PRODUCTS' tab.



Regd. Office: No. 16-C, Doddanekundi Industrial Area,
2nd Phase, Mahadevapura, Bangalore – 560048

Phone: 080 – 2845 7893

Fax: 080 – 2845 7890

E-mail: marketing@yukenindia.com

Website: www.yukenindia.com

CIN No.: L29150KA1976PLC003017