

Product Upgrade Notice – MP*-01-*-40 Series & MP*-03-*-20 Series

We are happy to announce an upgrade to the 1/8" & 3/8" Pilot Operated Modular Check Valve – MP*-01& MP*-03 valve series. While there is very little difference in the form or 'look' of the MP*-01 series, the new MP*-03 series will be noticeably different. However, the more important change is the availability of new variants to meet all your application needs. Refer table below.



MP*-01-*-4001H01/40H01



MP*-01-*-30



MP*-03-*-20H01/2001H01



MP*-03-*-10

	OLD	NEW	REMARKS
Low Pilot Pressure Control Type Or Decompression Type	MP*-01-*-30	MP*-01-*- 4001H01	1. Refer graph of Pilot pressure vs. Supply Pressure graph in catalog. 2. Catalog no. EIC-01-2016, Edit.01 released in 2016 and datasheets on our website contain the datasheets of only the new series.
Standard Model		MP*-01-*- 40H01	
Low Pilot Pressure Control Type Or Decompression Type	MP*-03-*-10	MP*-03-*- 2001H01	
Standard Model		MP*-03-*- 20H01	



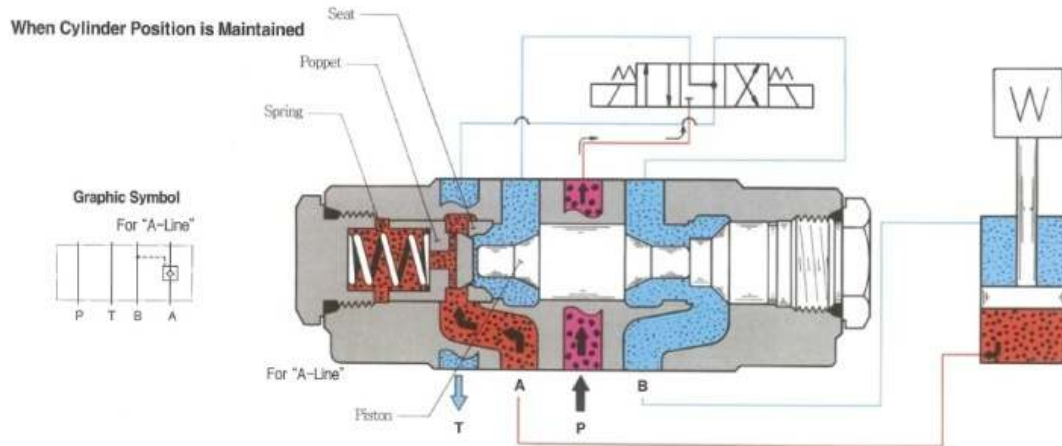
Regd. Office: No. 16-C, Doddanekundi Industrial Area,
2nd Phase, Mahadevapura, Bangalore – 560048

E-mail: marketing@yukenindia.com

Website: www.yukenindia.com

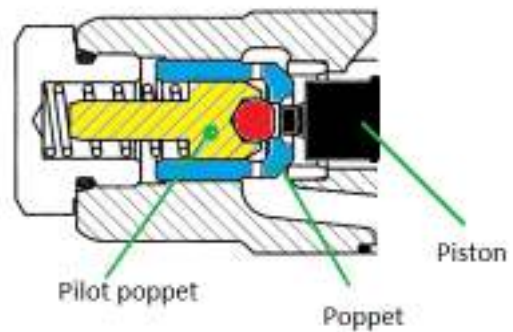
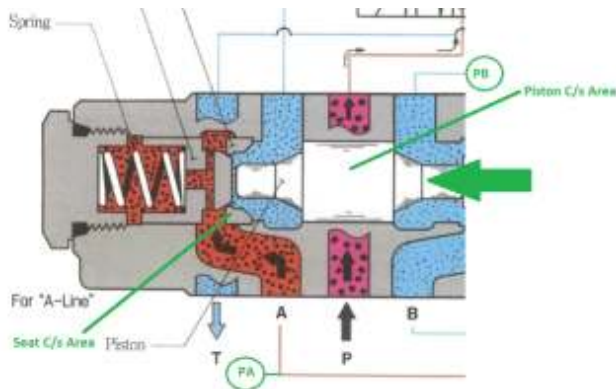
CIN No.: L29150KA1976PLC003017

Typical schematic of working of Pilot Operated Modular Check valve.

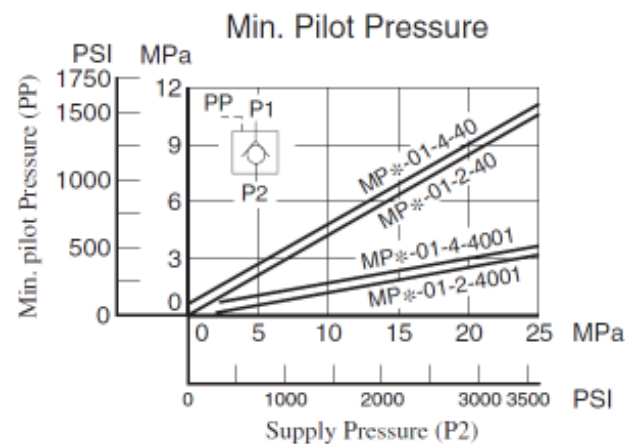


Schematic of Standard PO Check Valve

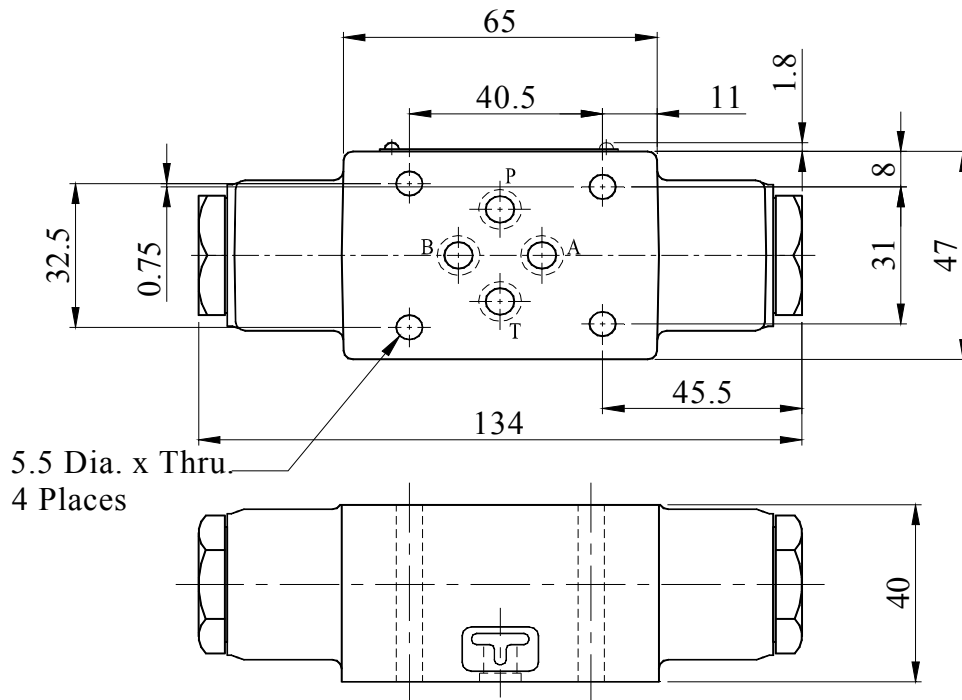
Schematic of Decompression Type PO Check Valve



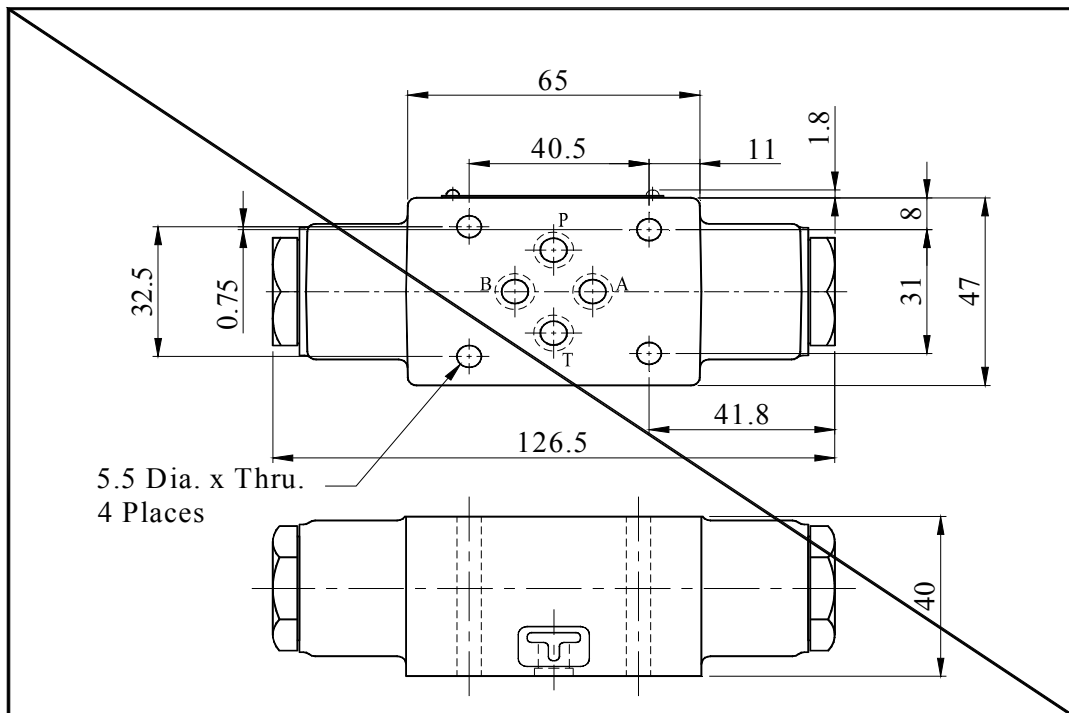
Note the difference in the construction on the check valve. The low pilot pressure type or decompression type valve features an additional smaller 'pilot' poppet that enables the valve to open at a much lower pilot pressure. Refer the min. pilot pressure vs. supply pressure graph for the MP*-01 series from the catalog. The standard design is more suited for low pressure system, while systems with large cylinder volumes and high pressure might be require the low pilot pressure version.



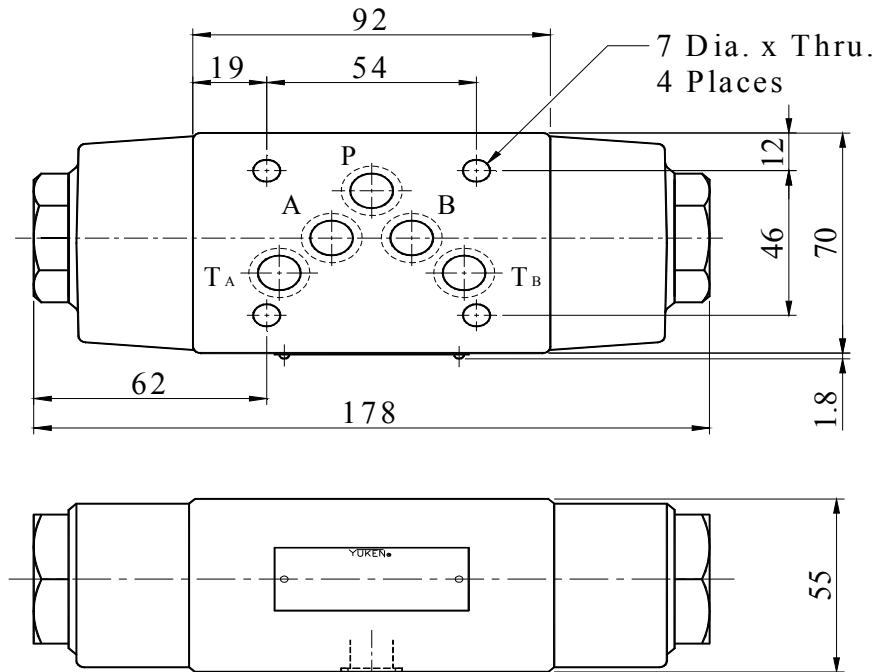
MP*-01-*-4001H01/40H01



MP*-01-*-30



MP*-03-*-2001H01/20H01



MP*-03-*-10

