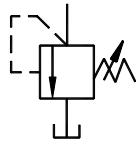


### Direct Operated Pressure Relief Valve

These valves are used in a hydraulic circuit to prevent damage due to excess pressure and to adjust the max. Pressure of small capacity. Available sizes NG6 & NG10.

Graphic Symbol



### Specifications

| Model Number | Max. Operating Pressure<br>Kgf/cm <sup>2</sup> | Pres. Adj. Range<br>Kgf/cm <sup>2</sup> | Max. Flow<br>L/min. | Mass<br>Kg. |
|--------------|--|---|---------------------|-------------|
| YCB-06       | 400  | See Model No.<br>Designation            | 50                  | 1.5         |
| YCB-10       |  |   | 120                 | 3.25        |

### Model Number Designation

| YCB                              | -06        | -A  | -G  | -2                              | -21               |
|----------------------------------|------------|---|---|---------------------------------|-------------------|
| Series Number                    | Valve Size | Max Adj. Pres.#<br>Kgf/cm <sup>2</sup>                        | Type of Mounting  | Type of Operation               | Design*<br>Number |
| YCB: Cartridge type Relief Valve | 06<br>10   | A0 : 25<br>A : 50<br>B : 100<br>C : 200<br>D : 315<br>E : 400 | None: Cartridge Type<br>G: Sub Plate Type<br>T: Threaded Type | 1 : Adj. Screw<br>2 : Hand Knob | 21                |

\* Design numbers subjected to change, but installation dimensions remains as shown.

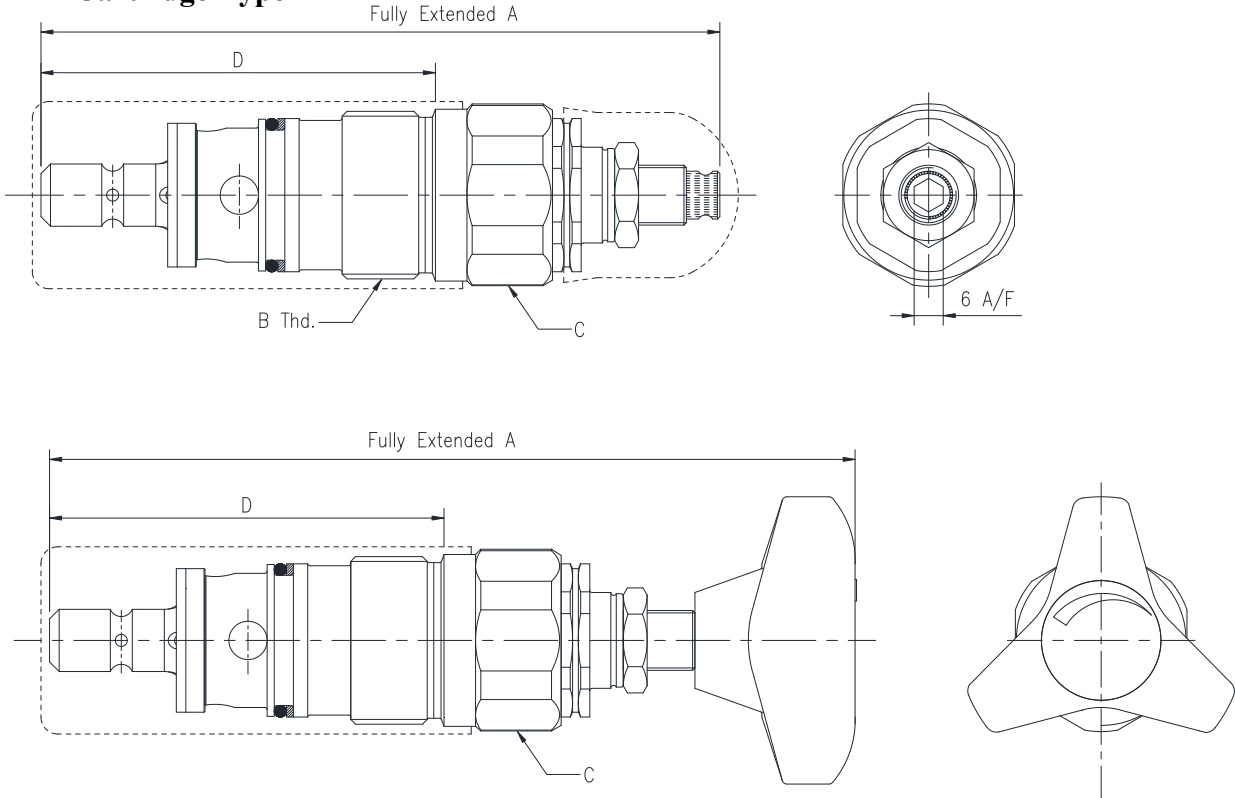
# Ref. the minimum adjusting pressure characteristics on Page No. 267.

### Mounting Bolts

| Model Numbers   | Socket Head Cap Screw | Qty. | Mounting Bolt Ordering Code |
|-----------------|-----------------------|------|-----------------------------|
| YCB-06-※-G-21   | M6 x 35 Lg.           | 4    | BKYCB-06-20                 |
| YCB-10-※-G-※-21 | M8 x 50 Lg.           | 4    | BKYCB-10-20                 |

**Mounting Details**

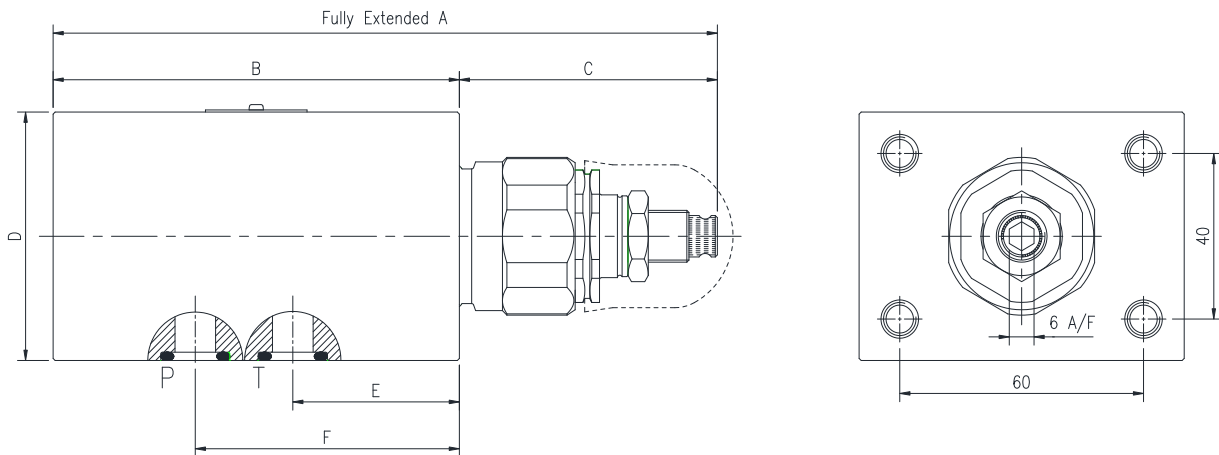
● **Cartridge Type**



| Model Numbers | A   | B         | C      | D    | Cavity Details     |
|---------------|-----|-----------|--------|------|--------------------|
| YCB-06-※-1-21 | 132 | M28 x 1.5 | A/F 32 | 69   | Refer Page No. 266 |
| YCB-06-※-2-21 | 158 |           |        |      |                    |
| YCB-10-※-1-21 | 142 | M35 x 1.5 | A/F 36 | 82.5 |                    |
| YCB-10-※-2-21 | 169 |           |        |      |                    |

**DIMENSIONS IN MILLIMETRES**

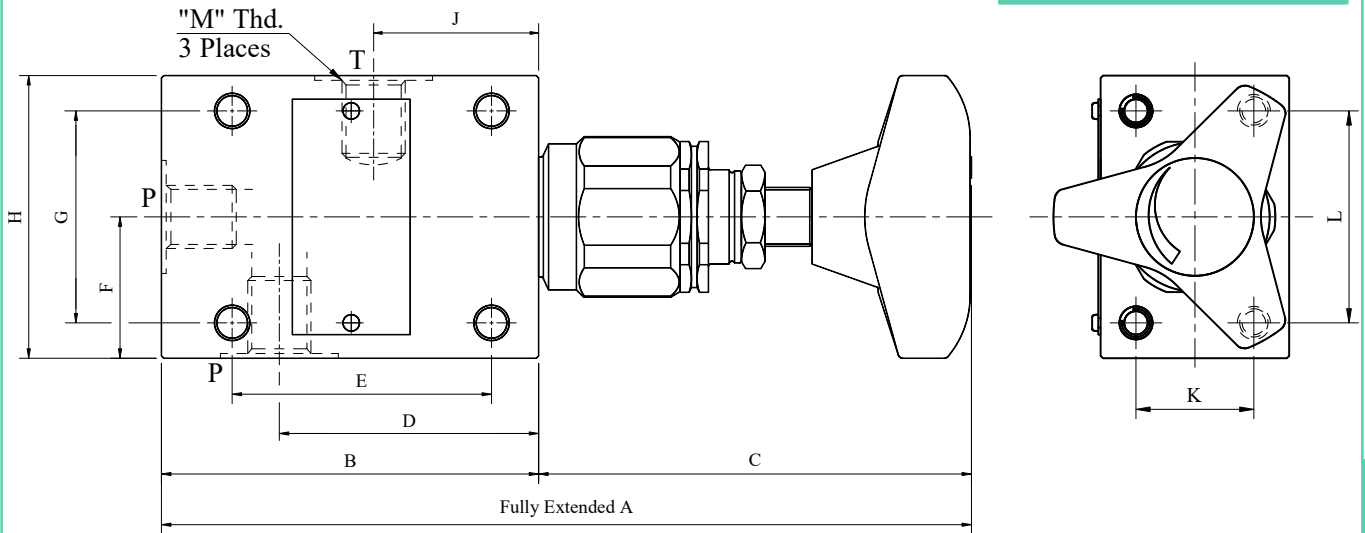
● **Sub-plate Type.**



| Model Numbers | A     | B   | C    | D  | E  | F  |
|---------------|-------|-----|------|----|----|----|
| YCB-06        | 147.6 | 80  | 67.6 | 40 | 35 | 55 |
| YCB-10        | 164   | 100 | 90.3 | 60 | 41 | 65 |

• Threaded Type

DIMENSIONS IN MILLIMETRES



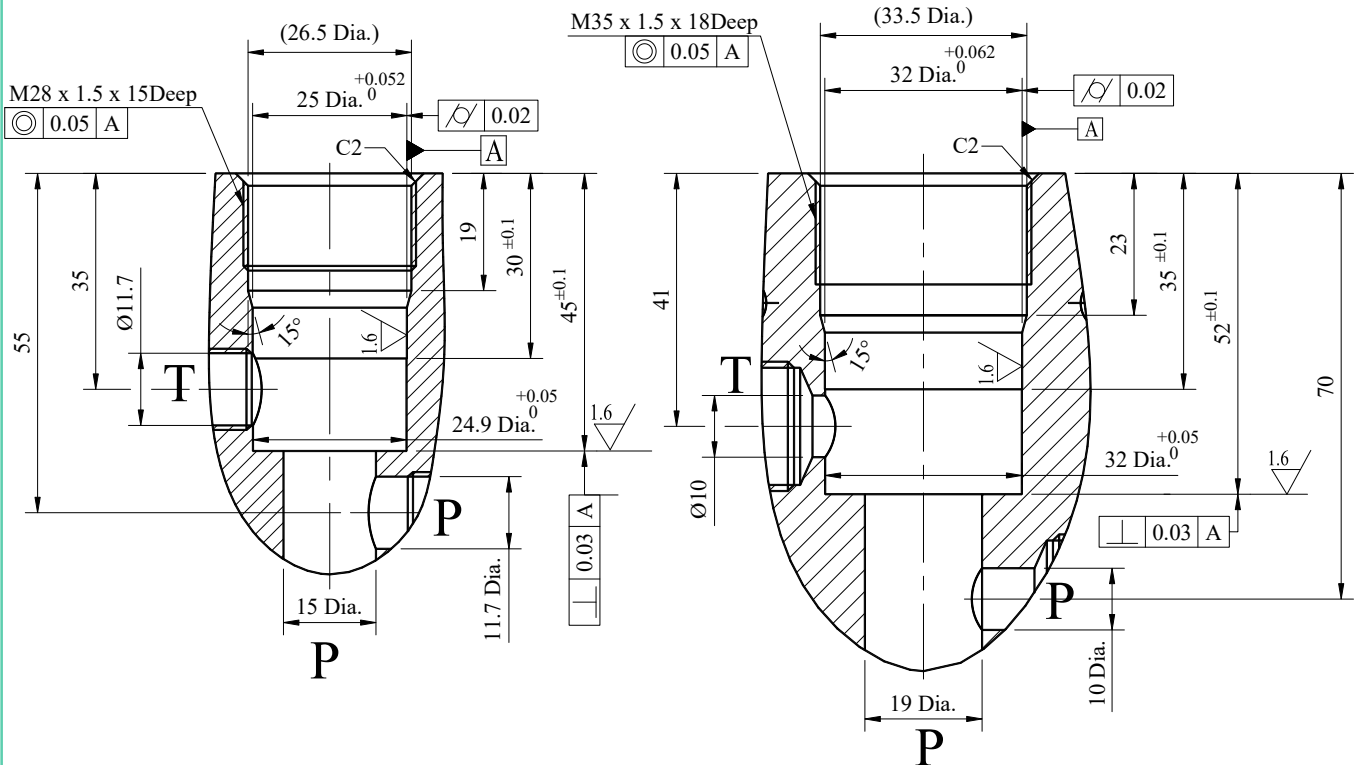
Note : Two optional 'P' ports at 90° to each other are provided. Block the one not in use.

| Model Numbers | A     | B   | C    | D  | E  | F  | G  | H  | J  | K  | L  | M         |
|---------------|-------|-----|------|----|----|----|----|----|----|----|----|-----------|
| YCB-06        | 174   | 80  | 94   | 55 | 55 | 30 | 45 | 60 | 35 | 25 | 45 | 1/4 BSP.F |
| YCB-10        | 168.5 | 100 | 68.5 | 69 | 70 | 40 | 60 | 80 | 41 | 40 | 60 | 1/2 BSP.F |

■ Mounting Cavity Dimensions

• YCB-06

• YCB-10



■ Cartridge Mounting Torque in Kgf-cm

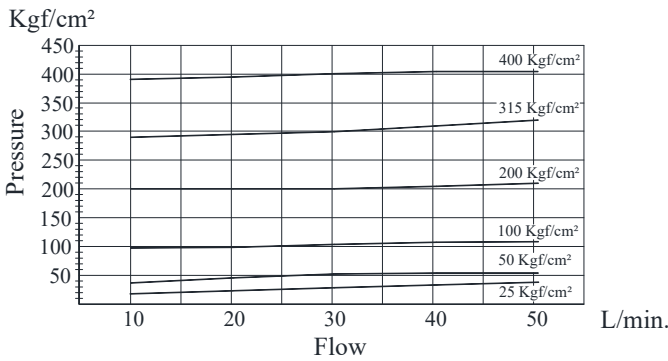
| Model Numbers | Pressure stage in Kgf/cm <sup>2</sup> |           |
|---------------|---------------------------------------|-----------|
|               | Up to 200                             | Up to 400 |
| YCB-06        | 510                                   | 816       |
| YCB-10        | 1020                                  | 1530      |

Note : Two optional 'P' ports at 90° to each other are provided. Block the one not in use.

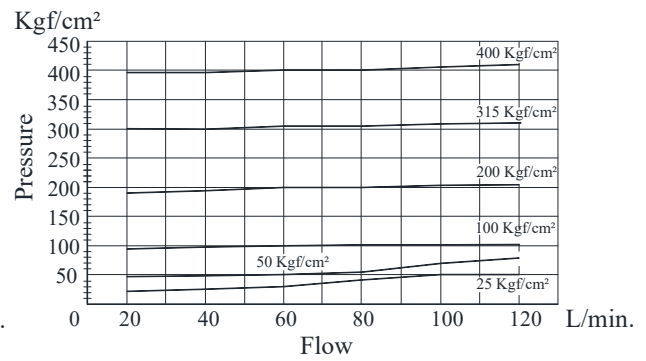
C  
Direct Operated Pressure Relief Valve

**Nominal Override Characteristics**

● **YCB-06**

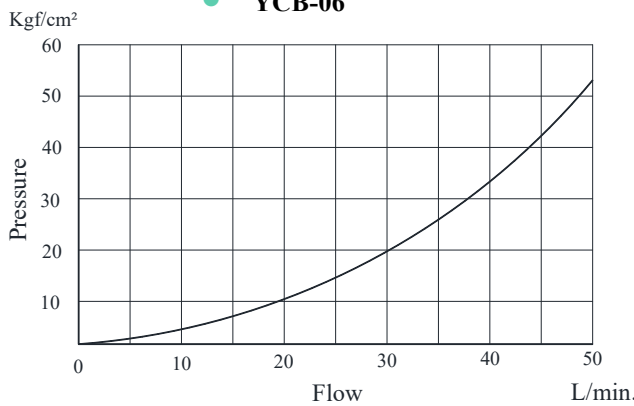


● **YCB-10**

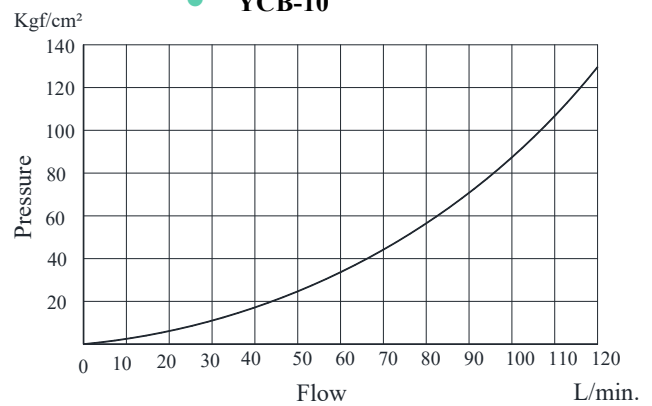


**Minimum Adjusting Pressure**

● **YCB-06**



● **YCB-10**



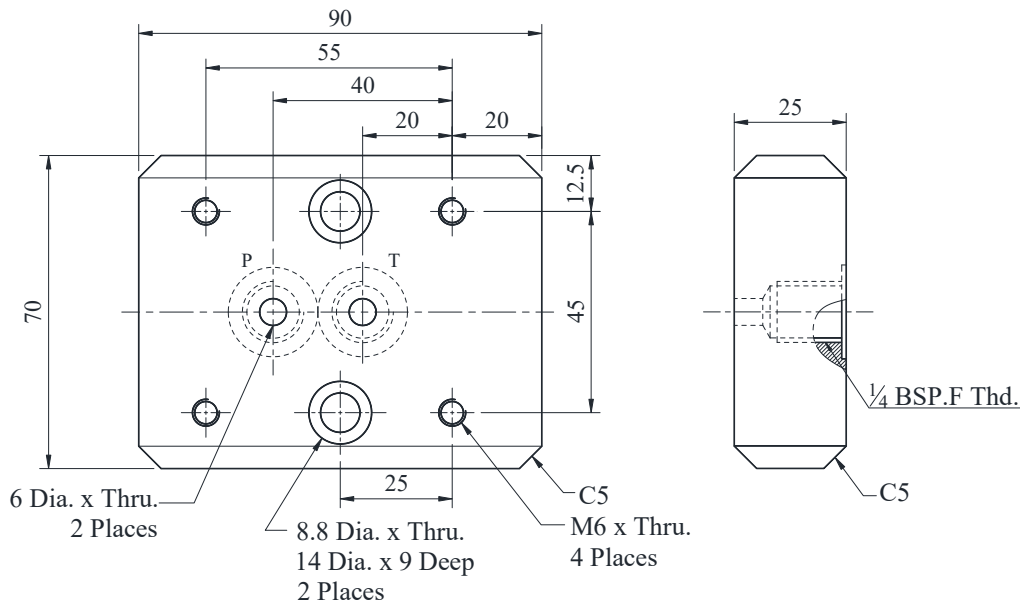
\* Curve reflects E-Spring characteristics.

**Sub-plate**

| Valve Model Numbers | Sub-plate Model Numbers | Thread Size | Approx. Mass Kg. |
|---------------------|-------------------------|-------------|------------------|
| YCB-06-※-G-※-21     | YCBM-06-20              | 1/4 BSP.F   | 2.5              |
| YCB-10-※-G-※-21     | YCBM-10-20              | 1/2 BSP.F   | 3.4              |

DIMENSIONS IN MILLIMETRES

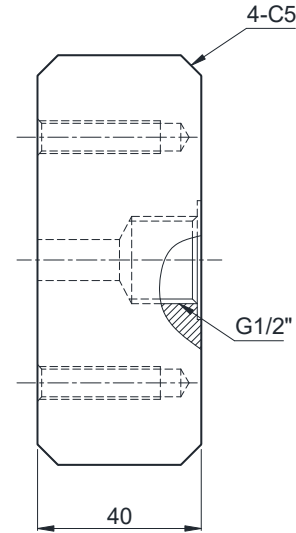
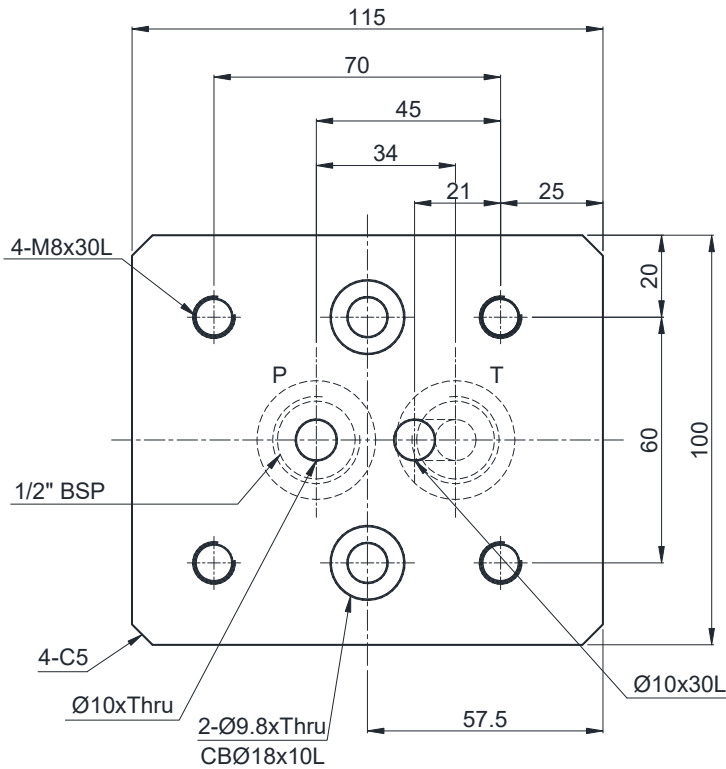
● **Sub-plate: YCBM-06-20**



**Direct Operated Pressure Relief Valve**

● Sub-plate: YCBM-10-20

DIMENSIONS IN MILLIMETRES



■ Spare Parts List

● YCB-06

● List of Seals

| Sl. No. | Name of Parts | Parts Number | Quantity |          |          |
|---------|---------------|--------------|----------|----------|----------|
|         |               |              | YCB-06   | YCB-06-T | YCB-06-G |
| 1       | O-Ring        | VKH4-1493-0  | 1        |          | 1        |
| 2       | O-Ring        | VKH4-1512-0  | 1        |          | 1        |
| 3       | O-Ring        | SO-NA-P10    | 1        |          | 1        |
| 4       | Back-Up Ring  | SO-BB-P10    | 1        |          | 1        |
| 5       | O-Ring        | VKH4-1507-0  | -        |          | 2        |
| 6       | O-Ring        | VKH4-1524-0  | 1        |          | 1        |

Note : When ordering the seals, please specify the seal kit number from the table above.

● List of Seal Kits

| Model Numbers | Seal Kit Numbers |
|---------------|------------------|
| YCB-06-※-※-21 | KS-YCB-06-20     |
| YCB-06-※-T-21 |                  |
| YCB-06-※-G-21 | KS-YCB-06-G-20   |

● YCB-10

| Sl. No. | Name of Parts | Parts Number | Quantity |          |          |
|---------|---------------|--------------|----------|----------|----------|
|         |               |              | YCB-10-  | YCB-10-T | YCB-10-G |
| 1       | O-Ring        | VKH4-1474-0  | 1        |          | 1        |
| 2       | O-Ring        | VKH4-1473-0  | 1        |          | 1        |
| 3       | O-Ring        | SO-NA-P10    | 1        |          | 1        |
| 4       | Back-Up Ring  | SO-BB-P10    | 1        |          | 1        |
| 5       | O-Ring        | VKH4-1513-0  | -        |          | 2        |
| 6       | O-Ring        | VKH4-1524-0  | 1        |          | 1        |

Note : When ordering the seals, please specify the seal kit number from the table above.

| Model Numbers | Seal Kit Numbers |
|---------------|------------------|
| YCB-10-※-※-21 | KS-YCB-10-20     |
| YCB-10-※-T-21 |                  |
| YCB-10-※-G-21 | KS-YCB-10-G-20   |