

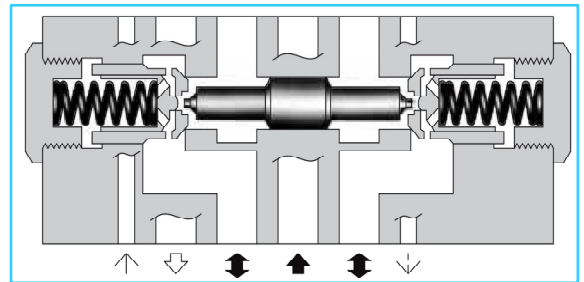
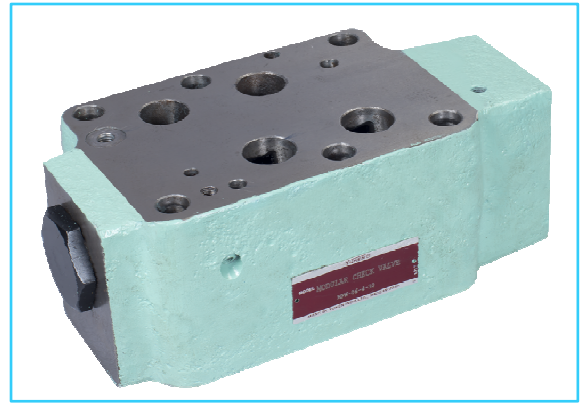
**■ Pilot Operated Check Modular Valves**

**■ Specifications**

Model Numbers	Max. Operating Pressure Kg <sub>f</sub> /cm <sup>2</sup>	Max. Flow L/Min.
MPA-06※-※-※-30H01	250	500
MPB-06※-※-※-30H01		
MPW-06※-30H01		

**Graphic Symbols**

Pilot-Drain Type Model No.	Internal Pilot- Internal drain type	External Pilot- External drain type	External Pilot- Internal drain type
MPA-06	 MPA-06-※	 MPA-06※-※-X	 MPA-06※-※-Y
MPB-06	 MPB-06-※	 MPB-06※-※-X	 MPB-06※-※-Y
MPW-06	 MPW-06-※		



**■ Model Number Designation**

F-	MPA	-06	S	-2	-X	-30	H01
Special Seals	Series Number	Valve Size	Port Tapping Feature of Pilot-Drain Port *1	Cracking Pressure Kg <sub>f</sub> /cm <sup>2</sup>	Pilot-Drain *2 Connection	Design Number	Design Standard
<b>F:</b> Special Seal For Phosphate Ester Type Fluids (Omit if not required)	<b>MPA:</b> Pilot Operated Check for A-Line <b>MPB:</b> Pilot Operated Check for B-Line <b>MPW:</b> Pilot Operated Check for A-B-line	<b>06</b>	<b>None :</b> Taper Thread <b>S:</b> Straight Thread (Applicable only for Japanese std. "JIS")	<b>2 : 2</b> <b>4 : 4</b>	<b>None:</b> Internal Pilot-Internal Drain <b>X :</b> External Pilot-External Drain <b>Y :</b> External Pilot-Internal Drain	<b>30</b>	<b>H01</b>

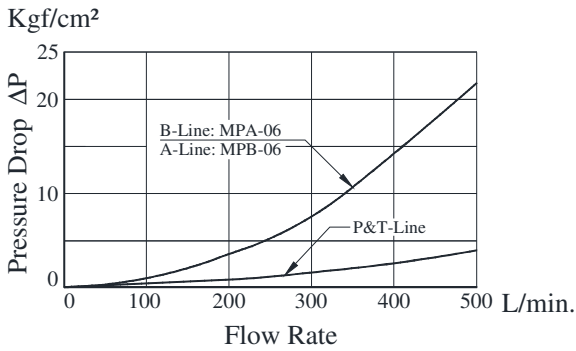
\*1 This item applies only to External Pilot or External Drain Type.

\*2 Only "None: internal Pilot-Internal Drain Type" is available for MPW (for "A&B-Line")

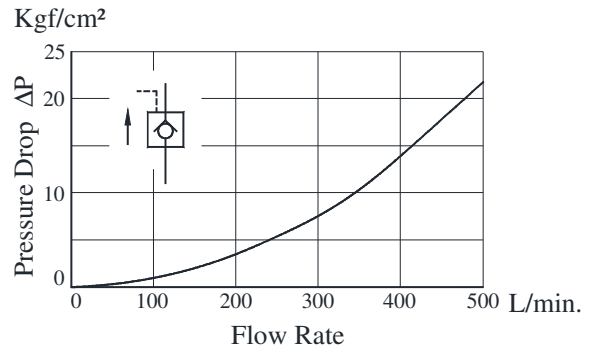
**Typical Performance Characteristics**

Hydraulic Fluid: Viscosity 35cSt, Specific Gravity 0.850

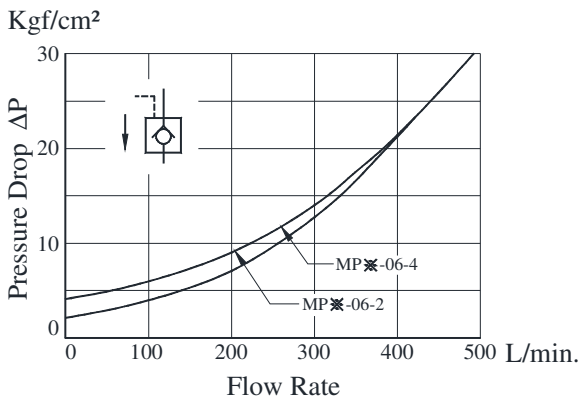
**Pressure Drop**



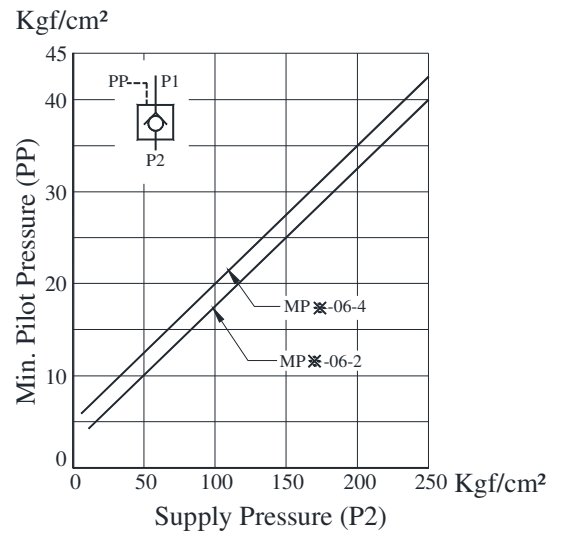
**Pressure Drop for Reversed Controlled Flow**



**Pressure Drop for Free Flow**

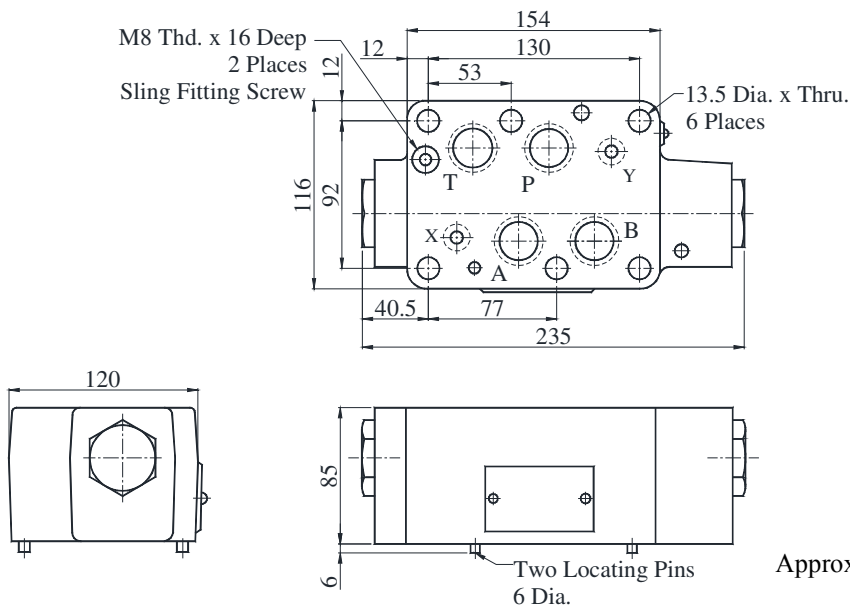


**Min. Pilot Pressure**



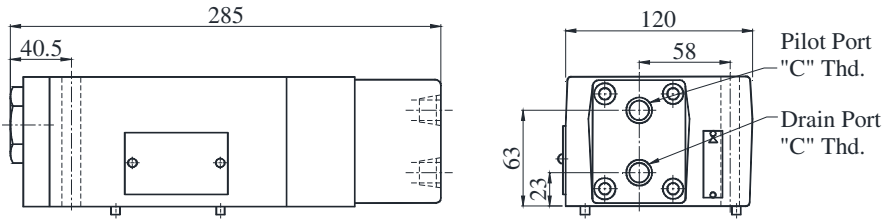
- **MPA-06-※-30H01**
- **MPB-06-※-30H01** (Internal Pilot-Internal Drain Type)
- **MPW-06-※-30H01**

DIMENSIONS IN MILLIMETRES



Approx. Mass..... 11.6 Kg.

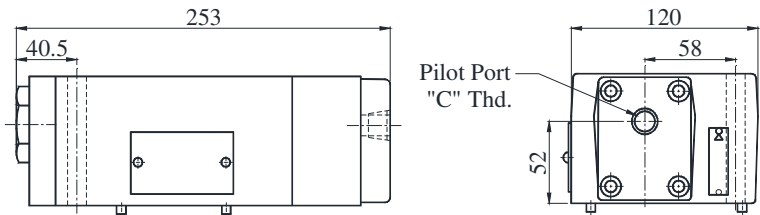
● **MPA-06-※-※-X-30H01** (External Pilot-External Drain Type)



**DIMENSIONS IN MILLIMETRES**

Approx. Mass..... 13 Kg.

● **MPA-06-※-※-Y-30H01** (External Pilot-Internal Drain Type)

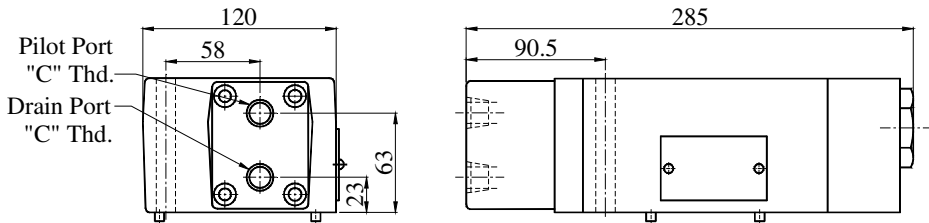


Model Numbers	Thread Size "C" Thd.
MPA-06-※-※-30	Rc 3/8 = 3/8 BSP.Tr.
MPA-06S-※-※-30	G 3/8

Approx. Mass..... 11.6 Kg.

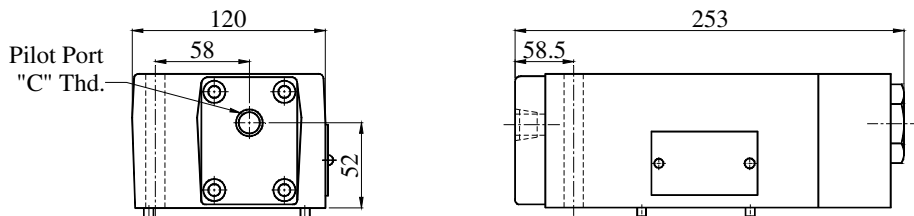
● For other dimensions, refer to "Internal Pilot-Internal drain type" drawing above.

● **MPB-06-※-※-X-30H01** (External Pilot-External Drain Type)



Approx. Mass..... 13 Kg.

● **MPB-06-※-※-Y-30H01** (External Pilot-Internal Drain Type)



**DIMENSIONS IN MILLIMETRES**

Approx. Mass..... 11.6 Kg.

● For other dimensions, refer to "Internal Pilot-Internal drain type" drawing above.

Model Numbers	Thread Size "C" Thd.
MPB-06-※-※-30	Rc 3/8 = 3/8 BSP.Tr.
MPB-06S-※-※-30	G 3/8

**■ Spare Parts List**

● **List of Seals**

Sl. No.	Name of Parts	Part Nos.	Quantity		
			Internal Pilot-Internal Drain	External Pilot-External Drain	External Pilot-Internal Drain
1	O-Ring	SO-NB-P14	2	2	2
2	O-Ring	SO-NA-P26	-	1	-
3	O-Ring	SO-NB-P28	4	4	4
4	O-Ring	SO-NB-P32	2	1	1
5	O-Ring	SO-NB-P36	-	1	1

Note : When ordering the seals, please specify the seal kit numbers from the table below.

● **List of Seal Kits**

Model Nos.	Seal Kit Numbers
MPA-06-※	KS-MPA-06-10
MPB-06-※	
MPW-06-※	
MPA-06※-※-X	KS-MPA-06-X-10
MPB-06※-※-X	
MPA-06※-※-Y	KS-MPA-06-Y-10
MPA-06※-※-Y	