

Product upgrade notice – MS*-03-*-*-20

We are happy to announce an upgrade to the 3/8" Throttle & Check Modular Valve – MS*-03-*-*-20. The modified design is designated '20H10'. While the 'form' or 'look' will be slightly different, the upgraded version maintains mounting interchangeability and brings in improved reliability. Notice from the pictures below that the end covers on the ends are now replaced with a nut/adaptor directly threaded into the valve body.



MS*-03-*-*-20H10



MS*-03-*-*-20

The changeover will occur in a phased manner, with priority to OEM installations. The modular valves are available off the shelf and can be ordered from any Yuken distributor or representative.



Regd. Office: No. 16-C, Doddanekundi Industrial Area,
2nd Phase, Mahadevapura, Bangalore – 560048

Phone: 080 – 2845 7893

Fax: 080 – 2845 7890

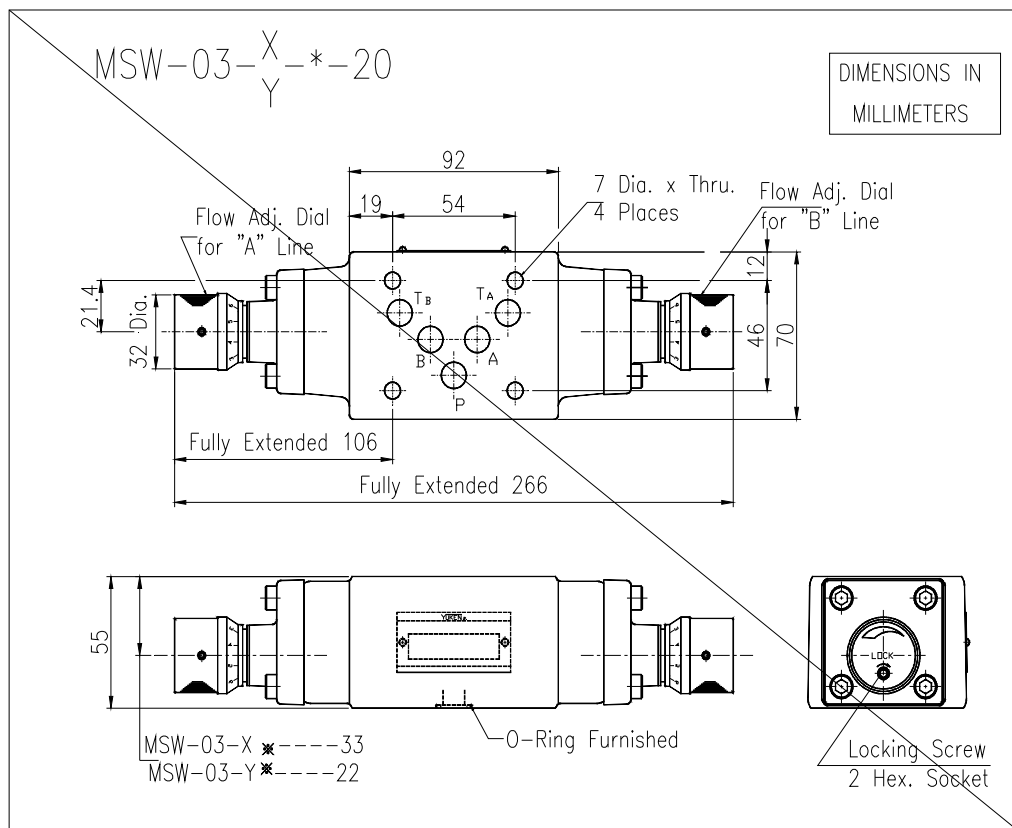
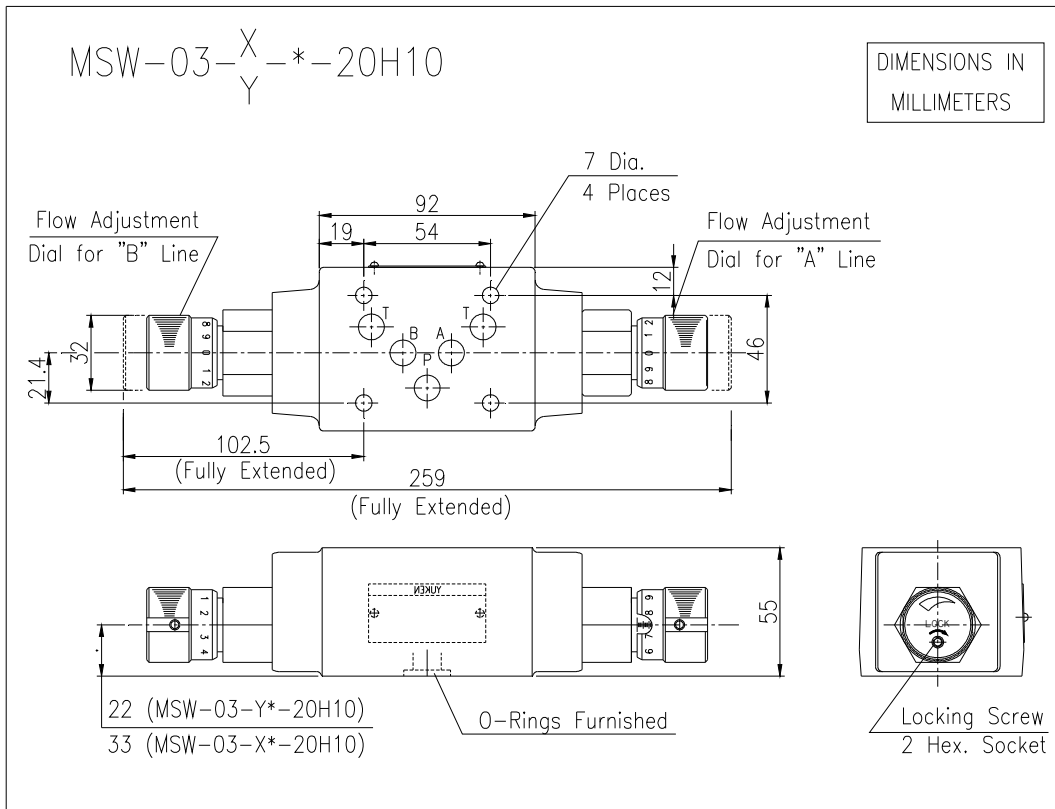
E-mail: marketing@yukenindia.com

Website: www.yukenindia.com

CIN No.: L29150KA1976PLC003017

Product News

Date June 2018
Rel. No. PNU/01/06/2018



Regd. Office: No. 16-C, Doddanekundi Industrial Area,
2nd Phase, Mahadevapura, Bangalore – 560048

Phone: 080 – 2845 7893

Fax: 080 – 2845 7890

E-mail: marketing@yukenindia.com

Website: www.yukenindia.com

CIN No.: L29150KA1976PLC003017