

■ YC Series Load Holding Cartridge Valves

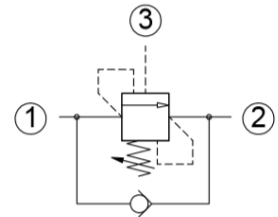
Load holding cartridge valves with internal and external pilot are used to control overrunning load, The check valve allows free flow from the directional valve (port 2) to the load (port 1) while a direct-acting, pilot-assisted relief valve controls flow from port 1 to port 2. Pilot assist at port 3 lowers the effective setting of the relief valve at a rate determined by the pilot ratio.



■ Features

- 3:1 pilot ratio with adjustable setting.
- Maximum operating pressure 350 bar.
- Minimum setting pressure 35 bar.
- Maximum flow rate 60 lpm.
- Maximum valve leakage at reseal : 5 drops/minute.

Graphical symbol



■ Specifications

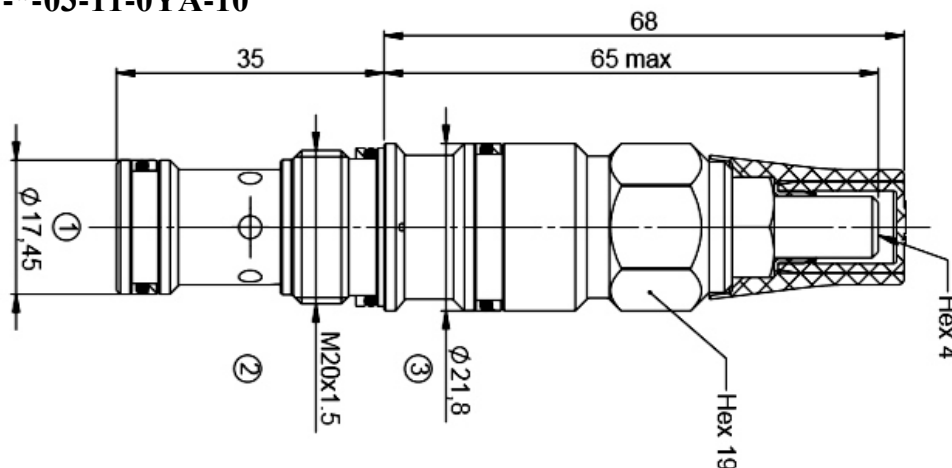
Model Numbers	Pilot ratio	Max.Flow (lpm)	Temperature Range	Mass kg(Approx)
YC00-*-T*-03-11-0YA	3:1	60	-30 to 100°C (with BunaN seals)	0.150
YC00-*-M*-03-11-0YA				0.150
YC00-*-D*-03-11-0YA				0.150

■ Model Number Designation

YC00	0	T	210	03	11	0YA	10
Series Number	seals	Spring (bar)	Setting Range (bar)	Pilot Ratio	Cavity	Setting	Design No
YC00 : Load Holding Valve (adjustable setting)	0 : Buna 2 : Viton	T : 35 ~ 105	100 : 100	03 : 3:1	11 : YC11A	0YA : Adjustable Setting	10
		M : 70 ~ 210	210 : 210				
		D : 140 ~ 350	350 : 350				

* Refer page 3/3 for cartridge valves with valve body.

■ YC00-*-03-11-0YA-10



Dimensions in Millimeters

Technical Details

cavity	YC11A
Capacity	60 lpm (16gpm)
max. operating pressure	350 bar
pilot ratio	3:1
pressure increase per turn	206 bar (spring D) 132 bar (spring M) 33 bar (spring T)
pressure setting established @	cracking pressure (1 in 3/min)
operating characteristic	Standard
reseat	>85%
max.recommended load pressure at maximum setting	270bar(3350 psi)
valve hex size	19
valve installation torque	40-45 Nm (30-35 lbf ft)
adjustment screw internal hex size	4
seal-lock hex size	13
seal-lock torque	12-15 Nm (9-11 lbf ft)
external component surface treatment	zinc plating
fluids	mineral based or synthetics with lubricating properties at viscosities of 10 to 500 mm ² /s (cSt)
filtration	Nominal value max. 10µm(NAS 8)/ ISO 4406 19/17/20

Note

- Turn adjustment clockwise to increase setting.
- Backpressure at port 2 adds to the effective relief setting at a ratio of 1 plus the pilot ratio times the backpressure.
- Set counterbalance valve at least 1.3 times the maximum load induced pressure.
- Declared reseal valve is obtained with valve set @ maximum setting.

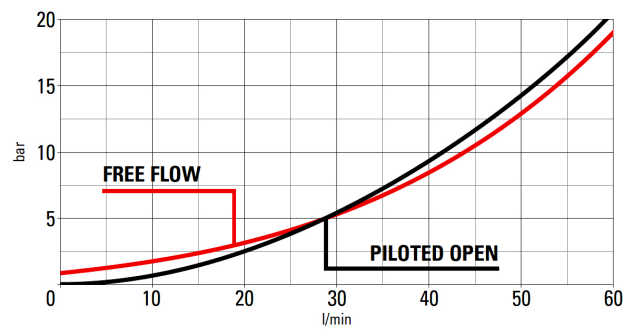
Ordering Information

Example : Load Holding Valves having a pilot ratio of 3:1 and pressure range of 70 ~ 210 bar with Buna seals and setting pressure of 100 bar : **YC00-0-M-210-03-11-0YA-10**, Material Number : **1000037236**

Sl.No	Model code	Material Number
1	YC00-0-T-100-03-11-0YA-10	1000037323
2	YC00-0-M-210-03-11-0YA-10	1000037236
3 *	YC00-0-D-350-03-11-0YA-10	1000037237
4	YC00-2-T-100-03-11-0YA-10	1000037238
5	YC00-2-M-210-03-11-0YA-10	1000037239
6	YC00-2-D-350-03-11-0YA-10	1000037240

* Preferred series.

Performance Curves



Cavity Details

CAVITY CODE # : YC11A

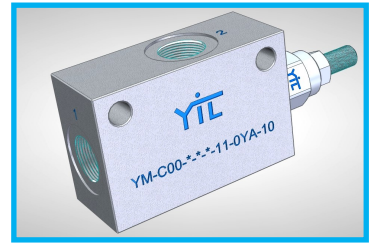
* Refer separate sheet for cavity details.

Seal Kit

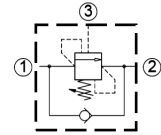
SEAL KIT			
Sl.No	Description	Model code	Material Number
1	Buna N	Y-S00T11ASN900000	1000037313
2	Viton	Y-S00T11ASV900000	1000037314

■ YC Series Load Holding cartridge Valves with Valve Body

Load holding cartridge valves along with valve body with internal and external pilot are used to control overrunning load, The check valve allows free flow from the directional valve (port 2) to the load (port 1) while a direct-acting, pilot-assisted relief valve controls flow from port 1 to port 2. Pilot assist at port 3 lowers the effective setting of the relief valve at a rate determined by the pilot ratio.



Graphical symbol



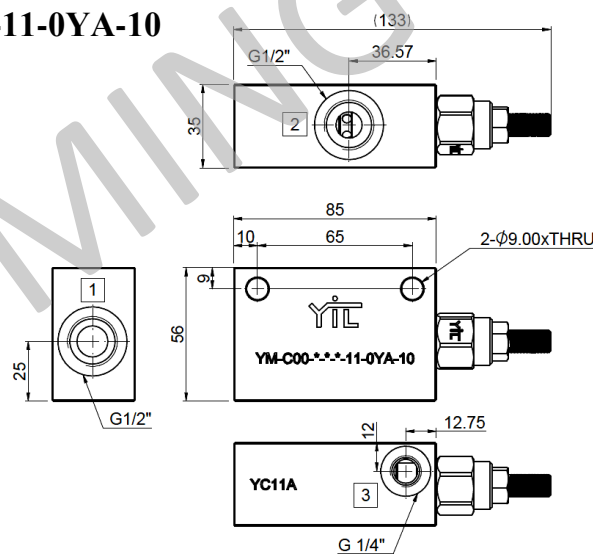
■ Features

- Line mounted.
- Two hole mounting

■ Model Number Designation

YM-C00	0	T	210	03	11	0YA	10
Series Number	seals	Spring (bar)	Setting Range (bar)	Pilot Ration	Cavity	Setting	Design No
YM-C00 : Load Holding Valve With Valve Body	0 : Buna 2 : Viton	T : 35 ~ 105	100 : 100	03 : 3:1	11 : YC11A	0YA : Adjustable Setting	10
		M : 70 ~ 210	210 : 210				
		D : 140 ~ 350	350 : 350				

■ YM-C00-***-03-11-0YA-10



Dimensions in Millimeters

■ Ordering Information

Example : Load Holding Valves with valve body having a pilot ratio of 3:1 and pressure range of 70 ~ 210 bar with setting pressure of 100 bar : YM-C00-0-M-210-03-11-0YA-10, Material Number : 1000000****

Sl.No	Model code	Material Number
1	YM-C00-0-T-100-03-11-0YA-10	1000000**
2	YM-C00-0-M-210-03-11-0YA-10	1000000**
3	YM-C00-0-D-350-03-11-0YA-10	1000000**
4	YM-C00-2-T-100-03-11-0YA-10	1000000**
5	YM-C00-2-M-210-03-11-0YA-10	1000000**
6	YM-C00-2-D-350-03-11-0YA-10	1000000**

For further information contact us

YUKEN INDIA LTD.

P. B. No. 5, Koppathimmanahalli Village,
H. Hosakote Gram Panchayat, Lakkur Hobli,
Malur Taluk, Kolar District- 563130, Karnataka

Email: marketing@yukenindia.com



LOAD HOLDING CARTRIDGE VALVES

■ YC Series Load Holding Cartridge Valves

Load holding cartridge valves with internal and external pilot are used to control overrunning load, The check valve allows free flow from the directional valve (port 2) to the load (port 1) while a direct-acting, pilot-assisted relief valve controls flow from port 1 to port 2. Pilot assist at port 3 lowers the effective setting of the relief valve at a rate determined by the pilot ratio.

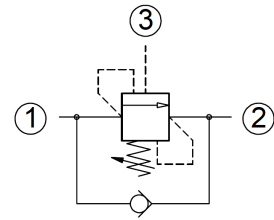


■ Features

- 4:1 & 10:1 pilot ratio with adjustable setting.
- Maximum operating pressure 350 bar.
- Minimum setting pressure 70 bar
- Maximum flow rate 120 lpm.
- Maximum valve leakage at reseal : 5 drops/minute.

■ Specifications

Graphical symbol



Model Numbers	Pilot ratio	Max.Flow (lpm)	Temperature Range	Mass kg(Approx)
YC00-*-M-210-*-02-0YA	4:1	120	-30 to 100°C (with BunaN seals)"	0.350
YC00-*-D-350-*-02-0YA	10:1			0.350

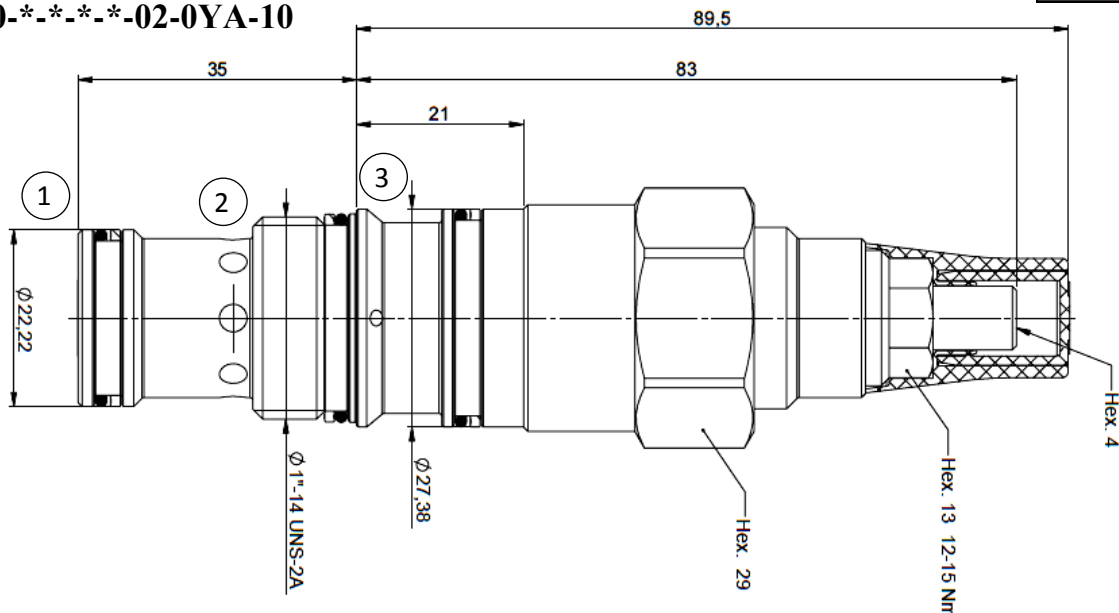
■ Model Number Designation

YC00	0	M	210	04	02	0YA	10
Series Number	seals	Spring (bar)	Setting Range (bar)	Pilot Ratio	Cavity	Setting	Design No
YC00 : Load Holding Cartridge Valve (adjustable setting)	0 : Buna	M : 70 ~210	210 : 210	04 : 4:1 10 : 10:1	02 : YC2A	0YA : Adjustable Setting	10
	2 : Viton	D : 140 ~350	350 : 350				

* Refer page 3/3 for cartridge valves with valve body.

Dimensions in Millimeters

■ YC00-*-.*-.*-02-0YA-10



YC Series Load Holding Cartridge Valves

Technical Details

cavity	YC2A
Capacity	120 lpm (30gpm)
max. operating pressure	350 bar
pilot ratio	4:1, 10:1
pressure increase per turn	156 bar (spring D) 49 bar (spring M)
pressure setting established @	cracking pressure (1 in 3/min)
operating characteristic	Standard
reseal	>85%
max.recommended load pressure at maximum setting	280bar(4000 psi)
valve hex size	29
valve installation torque	60-70 Nm (42-52 lbf ft)
adjustment screw internal hex size	4
seal-lock hex size	13
seal-lock torque	12-15 Nm (9-11 lbf ft)
external component surface treatment	zinc plating
fluids	mineral based or synthetics with lubricating properties at viscosities of 10 to 500 mm ² /s (cSt)
filtration	Nominal value max. 10µm(NAS 8)/ ISO 4406 19/17/20

Note

- Turn adjustment clockwise to increase setting.
- Backpressure at port 2 adds to the effective relief setting at a ratio of 1 plus the pilot ratio times the backpressure.
- Set counterbalance valve at least 1.3 times the maximum load induced pressure.
- This valve is not provided with positive seals on the pilot section.
- Declared reseal valve is obtained with valve set @ maximum setting.

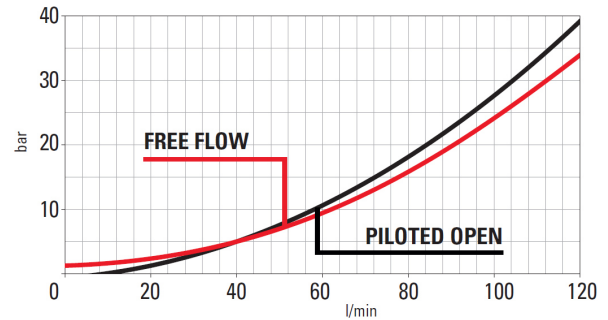
Ordering Information

Example : Load Holding Cartridge Valves having a pilot ratio of 4:1 and pressure range of 70 ~ 210 bar with Buna seals and setting pressure of 210 bar : **YC00-0-M-210-04-02-0YA-10**, Material Number : **1000037241**

Sl.No	Model code	Material Number
1 *	YC00-0-M-210-04-02-0YA-10	1000037241
2	YC00-0-D-350-04-02-0YA-10	1000037242
3	YC00-2-M-210-04-02-0YA-10	1000037243
4	YC00-2-D-350-04-02-0YA-10	1000037244
5	YC00-0-M-210-10-02-0YA-10	1000037245
6 *	YC00-0-D-350-10-02-0YA-10	1000037246
7	YC00-2-M-210-10-02-0YA-10	1000037247
8	YC00-2-D-350-10-02-0YA-10	1000037248

* Preferred series.

Performance Curves



Cavity Details

CAVITY CODE # : YC2A

* Refer separate sheet for cavity details.

Seal Kit

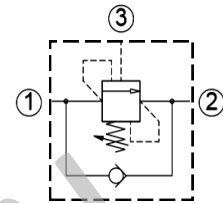
SEAL KIT			
Sl.No	Description	Model code	Material Number
1	Buna N	Y-S000T2ASN900000	1000037315
2	Viton	Y-S000T2ASV900000	1000037316

■ YC Series Load Holding cartridge Valves with Valve Body

Load holding cartridge valves along with valve body with internal and external pilot are used to control overrunning load, The check valve allows free flow from the directional valve (port 2) to the load (port 1) while a direct-acting, pilot-assisted relief valve controls flow from port 1 to port 2. Pilot assist at port 3 lowers the effective setting of the relief valve at a rate determined by the pilot ratio.



Graphical symbol



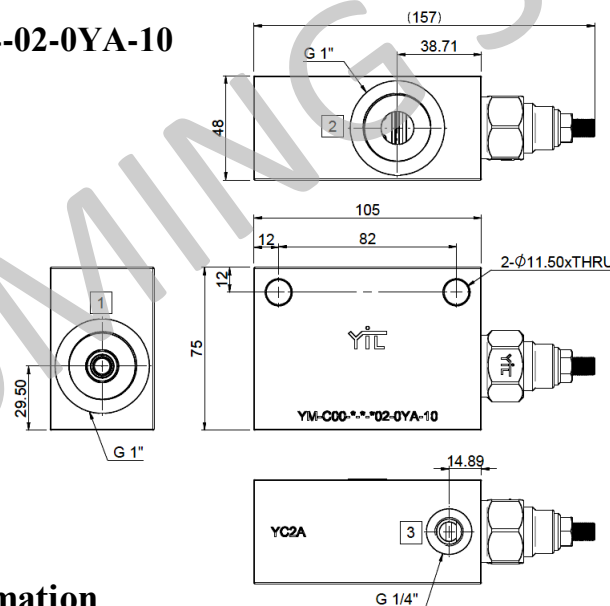
■ Features

- Line mounted.
- Two hole mounting

■ Model Number Designation

YM-C00	0	M	210	04	2	0YA	10
Series Number	seals	Spring (bar)	Setting Range (bar)	Pilot Ratio	Cavity	Setting	Design No
YM-C00 : Load Holding Cartridge Valve With Valve Body	0 : Buna 2 : Viton	M : 70 ~ 210 D : 140 ~ 350	210 : 210 350 : 350	04 : 4:1 10 : 10:1	02: YC2A	0YA : Adjustable Setting	10

■ YM-C00-0-M-210-04-02-0YA-10



Dimensions in Millimeters

■ Ordering Information

Example : Load Holding Cartridge Valves with valve body having a pilot ratio of 4:1 and pressure range of 70 ~ 210 bar with Buna seals and setting pressure of 210 bar : **YM-C00-0-M-210-04-02-0YA-10**, Material Number : **10000000******

Sl.No	Model code	Material Number
1	YM-C00-0-M-210-04-02-0YA-10	10000000**
2	YM-C00-0-D-350-04-02-0YA-10	10000000**
3	YM-C00-2-M-210-04-02-0YA-10	10000000**
4	YM-C00-2-D-350-04-02-0YA-10	10000000**
5	YM-C00-0-M-210-10-02-0YA-10	10000000**
6	YM-C00-0-D-350-10-02-0YA-10	10000000**
7	YM-C00-2-M-210-10-02-0YA-10	10000000**
8	YM-C00-2-D-350-10-02-0YA-10	10000000**

For further information contact us
YUKEN INDIA LTD.

P. B. No. 5, Koppalthimmanahalli Village,
H. Hosakote Gram Panchayat, Lakkur Hobli,
Malur Taluk, Kolar District- 563130, Karnataka

Email: marketing@yukenindia.com



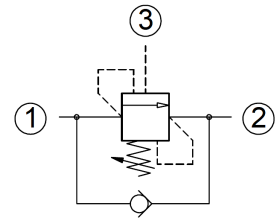
LOAD HOLDING CARTRIDGE VALVES

■ YC Series Load Holding Cartridge Valves

Load holding cartridge valves with internal and external pilot are used to control overrunning load. The check valve allows free flow from the directional valve (port 2) to the load (port 1) while a direct-acting, pilot-assisted relief valve controls flow from port 1 to port 2. Pilot assist at port 3 lowers the effective setting of the relief valve at a rate determined by the pilot ratio.



Graphical symbol



■ Features

- 2:1 pilot ratio with adjustable setting.
- Maximum operating pressure 350 bar.
- Minimum setting pressure 35 bar.
- Maximum flow rate 60 lpm.
- Maximum valve leakage at reseal : 5 drops/minute.

■ Specifications

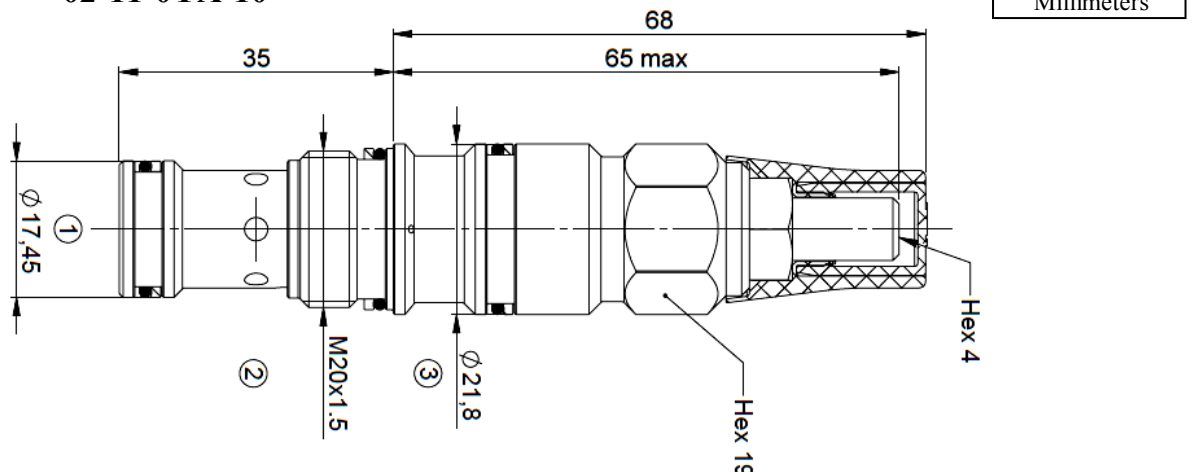
Model Numbers	Pilot ratio	Max.Flow (lpm)	Temperature Range	Mass kg(Approx)
YC00-*-T*-02-11-0YA	2:1	60	-30 to 100°C (with BunaN seals)	0.15
YC00-*-M*-02-11-0YA				0.15
YC00-*-D*-02-11-0YA				0.15

■ Model Number Designation

YC00	0	M	210	02	11	0YA	10
Series Number	seals	Spring (bar)	Setting Range (bar)	Pilot Ratio	Cavity	Setting	Design No
YC00 : Load Holding Cartridge Valve	0 : Buna 2 : Viton	T : 35 ~ 105	100 : 100	02 : 2:1	11 : YC11A	0YA : Adjustable Setting	10
		M : 70 ~ 210	210 : 210				
		D : 140 ~ 350	350 : 350				

* Refer page 3/3 for cartridge valves with valve body.

■ YC00-*-02-11-0YA-10



YC Series Load Holding Cartridge Valves

Technical Details

cavity	YC11A
Capacity	60 lpm (16gpm)
max. operating pressure	350 bar
pilot ratio	2:1
pressure increase per turn	206 bar (spring D) 132 bar (spring M) 33 bar (spring T)
pressure setting established @	cracking pressure (1 in 3/min)
operating characteristic	Standard
reseat	>85%
max.recommended load pressure at maximum setting	270bar(3350 psi)
valve hex size	19
valve installation torque	40-45 Nm (30-35 lbf ft)
adjustment screw internal hex size	4
seal-lock hex size	13
seal-lock torque	12-15 Nm (9-11 lbf ft)
external component surface treatment	zinc plating
fluids	mineral based or synthetics with lubricating properties at viscosities of 10 to 500 mm ² /s (cSt)
filtration	Nominal value max. 10µm(NAS 8)/ ISO 4406 19/17/20

Note

- Turn adjustment clockwise to increase setting.
- Backpressure at port 2 adds to the effective relief setting at a ratio of 1 plus the pilot ratio times the backpressure.
- Set counterbalance valve at least 1.3 times the maximum load induced pressure.
- Declared reseal valve is obtained with valve set @ maximum setting.

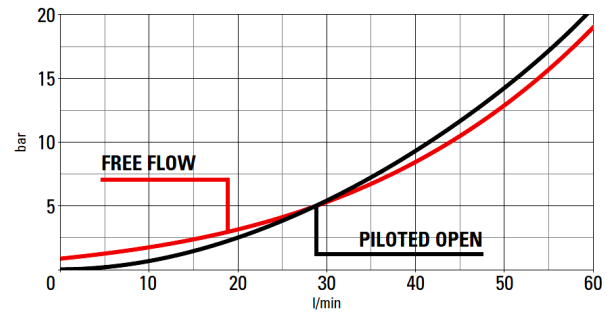
Ordering Information

Example : Load Holding Cartridge Valves having a pilot ratio of 2:1 and pressure range of 70 ~ 210 bar with Buna seals and setting pressure of 210 bar : **YC00-0-M-210-02-11-0YA-10**, Material Number : **1000037250**

Sl.No	Model code	Material Number
1	YC00-0-T-100-02-11-0YA-10	1000037249
2 *	YC00-0-M-210-02-11-0YA-10	1000037250
3	YC00-0-D-350-02-11-0YA-10	1000037251
4	YC00-2-T-100-02-11-0YA-10	1000037252
5	YC00-2-M-210-02-11-0YA-10	1000037253
6	YC00-2-D-350-02-11-0YA-10	1000037254

* Preferred series.

Performance Curves



Cavity Details

CAVITY CODE # : YC11A

* Refer separate sheet for cavity details.

Seal Kit

SEAL KIT

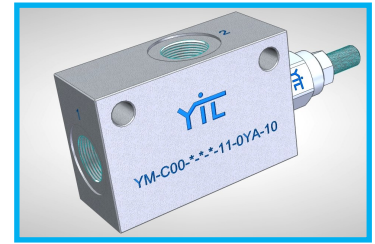
Sl.No	Description	Model code	Material Number
1	Buna N	Y-S00T11ASN900000	1000037313
2	Viton	Y-S00T11ASV900000	1000037314



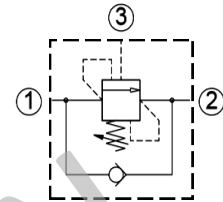
LOAD HOLDING CARTRIDGE VALVES

YC Series Load Holding cartridge Valves with Valve Body

Load holding cartridge valves along with valve body with internal and external pilot are used to control overrunning load, The check valve allows free flow from the directional valve (port 2) to the load (port 1) while a direct-acting, pilot-assisted relief valve controls flow from port 1 to port 2. Pilot assist at port 3 lowers the effective setting of the relief valve at a rate determined by the pilot ratio of 3:1 and with reverse check flow.



Graphical symbol



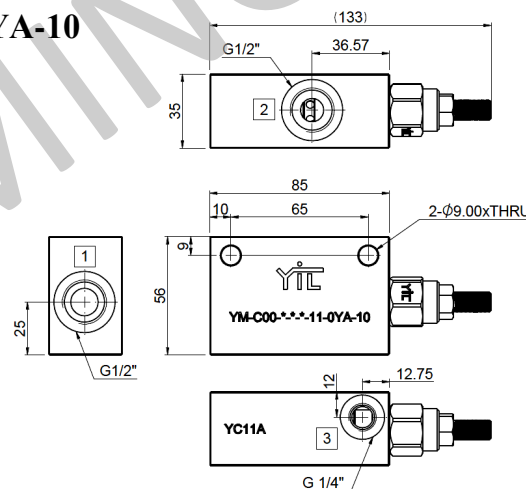
Features

- Line mounted.
- Two hole mounting

Model Number Designation

YC00	0	M	210	02	11	0YA	10
Series Number	seals	Spring (bar)	Setting Range (bar)	Pilot Ratio	Cavity	Setting	Design No
YM-C00 : Load Holding Cartridge Valve With Valve Body	0 : Buna 2 : Viton	T : 35 ~ 105	100 : 100	02 : 2:1	11 : YC11A	0YA : Adjustable Setting	10
		M : 70 ~ 210	210 : 210				
		D : 140 ~ 350	350 : 350				

YM-C00-0-M-210-02-11-0YA-10



Dimensions in Millimeters

Ordering Information

Example : Load Holding Cartridge Valves with valve body having a pilot ratio of 2:1 and pressure range of 70 ~ 210 bar with Buna seals and setting pressure of 210 bar : **YM-C00-0-M-210-04-02-0YA-10**, Material Number : **10000000******

SLNo	Model code	Material Number
1	YM-C00-0-T-100-02-11-0YA-10	10000000**
2	YM-C00-0-M-210-02-11-0YA-10	10000000**
3	YM-C00-0-D-350-02-11-0YA-10	10000000**
4	YM-C00-2-T-100-02-11-0YA-10	10000000**
5	YM-C00-2-M-210-02-11-0YA-10	10000000**
6	YM-C00-2-D-350-02-11-0YA-10	10000000**

For further information contact us
YUKEN INDIA LTD.

P. B. No. 5, Koppalthimmanahalli Village,
H. Hosakote Gram Panchayat, Lakkur Hobli,
Malur Taluk, Kolar District- 563130, Karnataka
Email: marketing@yukenindia.com

YC Series Load Holding Cartridge Valves



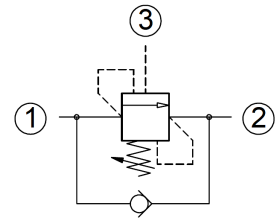
LOAD HOLDING CARTRIDGE VALVES

■ YC Series Load Holding Cartridge Valves

Load holding cartridge valves with internal and external pilot are used to control overrunning load, The check valve allows free flow from the directional valve (port 2) to the load (port 1) while a direct-acting, pilot-assisted relief valve controls flow from port 1 to port 2. Pilot assist at port 3 lowers the effective setting of the relief valve at a rate determined by the pilot ratio.



Graphical symbol



■ Features

- 5:1 pilot ratio with adjustable setting.
- Maximum operating pressure 350 bar.
- Minimum setting pressure 50 bar.
- Maximum flow rate 60 lpm.
- Maximum valve leakage at reseal : 5 drops/minute.

■ Specifications

Model Numbers	Pilot ratio	Max.Flow (lpm)	Temperature Range	Mass kg(Approx)
YC00-*-T-*-05-11-0YA	5:1	60	-30 to 100°C (with BunaN seals)	0.15
YC00-*-D-*-05-11-0YA				0.15

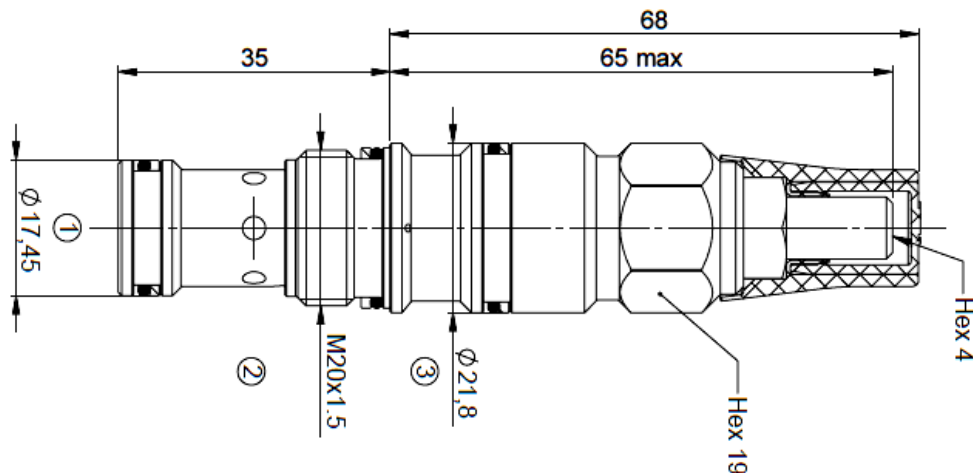
■ Model Number Designation

YC00	0	T	210	05	11	0YA	10
Series Number	seals	Spring (bar)	Setting Range (bar)	Pilot Ratio	Cavity	Setting	Design No
YC00 : Load Holding Cartridge Valve	0 : Buna 2 : Viton	T : 50 ~ 210	210 : 210	05 : 5:1	11 : YC11A	0YA : Adjustable Setting	10
		D : 210 ~ 350	350 : 350				

* Refer page 3/3 for cartridge valves with valve body.

■ YC00-*-05-11-0YA-10

Dimensions in Millimeters



■ Technical Details

cavity	YC11A
Capacity	60 lpm (16gpm)
max. operating pressure	350 bar
pilot ratio	5:1
pressure increase per turn	223 bar (spring D) 57 bar (spring T)
pressure setting established @	cracking pressure (1 in 3/min)
operating characteristic	Standard
reseat	>85%
max.recommended load pressure at maximum setting	270bar
valve hex size	19
valve installation torque	40-45 Nm (30-35 lbf ft)
adjustment screw internal hex size	4
seal-lock hex size	13
seal-lock torque	12-15 Nm (9-11 lbf ft)
external component surface treatment	zinc plating
fluids	mineral based or synthetics with lubricating properties at viscosities of 10 to 500 mm ² /s (cSt)
filtration	Nominal value max. 10µm(NAS 8)/ISO 4406 19/17/20

■ Note

- Turn adjustment clockwise to increase setting.
- Backpressure at port 2 adds to the effective relief setting at a ratio of 1 plus the pilot ratio times the backpressure.
- Set counterbalance valve at least 1.3 times the maximum load induced pressure.
- Declared reseal valve is obtained with valve set @ maximum setting.

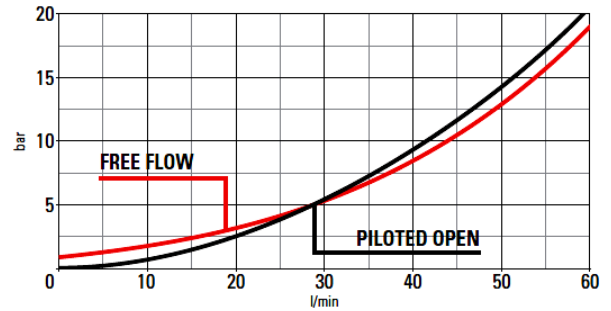
■ Ordering Information

Example : Load Holding Cartridge Valves having a pilot ratio of 5:1 and pressure range of 50 ~ 210 bar with Buna seals and setting pressure of 210 bar : YC00-0-T-210-05-11-0YA-10, Material Number : 1000037255

Sl.No	Model code	Material Number
1	YC00-0-T-210-05-11-0YA-10	1000037255
2 *	YC00-0-D-350-05-11-0YA-10	1000037256
3	YC00-2-T-210-05-11-0YA-10	1000037257
4	YC00-2-D-350-05-11-0YA-10	1000037258

* Preferred series.

■ Performance Curves



■ Cavity Details

CAVITY CODE # : YC11A

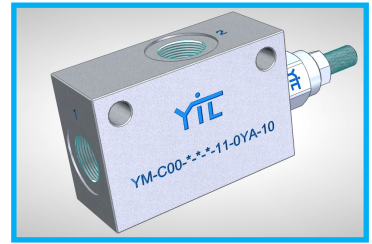
* Refer separate sheet for cavity details.

■ Seal Kit

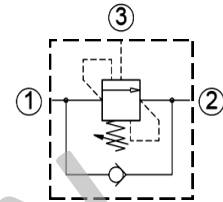
SEAL KIT			
Sl.No	Description	Model code	Material Number
1	Buna N	Y-S00T11ASN900000	1000037313
2	Viton	Y-S00T11ASV900000	1000037314

YC Series Load Holding cartridge Valves with Valve Body

Load holding cartridge valves along with valve body with internal and external pilot are used to control overrunning load, The check valve allows free flow from the directional valve (port 2) to the load (port 1) while a direct-acting, pilot-assisted relief valve controls flow from port 1 to port 2. Pilot assist at port 3 lowers the effective setting of the relief valve at a rate determined by the pilot ratio.



Graphical symbol



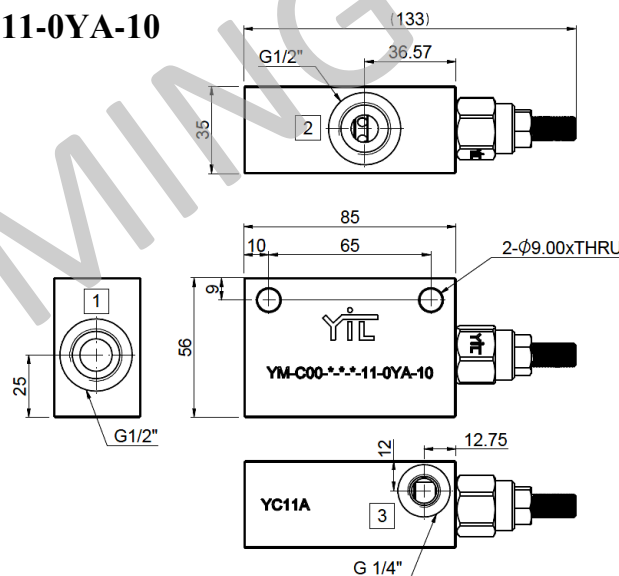
Features

- Line mounted.
- Two hole mounting

Model Number Designation

YM-C00	0	T	210	05	11	0YA	10
Series Number	seals	Spring (bar)	Setting Range (bar)	Pilot Ratio	Cavity	Setting	Design No
YM-C00 : Load Holding Cartridge Valve With Valve Body	0 : Buna 2 : Viton	T : 50 ~ 210	210 : 210	05 : 5:1	11 : YC11A	0YA : Adjustable Setting	10
		D : 210 ~ 350	350 : 350				

YM-C00-**-**-05-11-0YA-10



Dimensions in Millimeters

Ordering Information

Example : Load Holding Cartridge Valves with valve body having a pilot ratio of 5:1 and pressure range of 50 ~ 210 bar with Buna seals and setting pressure of 210 bar : **YM-C00-0-T-210-05-11-0YA-10**, Material Number : **1000000******

Sl.No	Model code	Material Number
1	YM-C00-0-T-210-05-11-0YA-10	1000000**
2	YM-C00-0-D-350-05-11-0YA-10	1000000**
3	YM-C00-2-T-210-05-11-0YA-10	1000000**
4	YM-C00-2-D-350-05-11-0YA-10	1000000**

For further information contact us
YUKEN INDIA LTD.

P. B. No. 5, Koppalthimmanahalli Village,
H. Hosakote Gram Panchayat, Lakkur Hobli,
Malur Taluk, Kolar District- 563130, Karnataka
Email: marketing@yukenindia.com

YC Series Load Holding Cartridge Valves



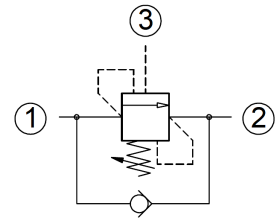
LOAD HOLDING CARTRIDGE VALVES

■ YC Series Load Holding Cartridge Valves

Load holding cartridge valves with internal and external pilot are used to control overrunning load, The check valve allows free flow from the directional valve (port 2) to the load (port 1) while a direct-acting, pilot-assisted relief valve controls flow from port 1 to port 2. Pilot assist at port 3 lowers the effective setting of the relief valve at a rate determined by the pilot ratio.



Graphical symbol



■ Features

- 8:1 pilot ratio with adjustable setting.
- Maximum operating pressure 350 bar.
- Minimum setting pressure 70bar.
- Maximum flow rate 60 lpm.
- Maximum valve leakage at reseal : 5 drops/minute.

■ Specifications

Model Numbers	Pilot ratio	Max.Flow (lpm)	Temperature Range	Mass kg(Approx)
YC00-*-M*-08-11-0YA	8:1	60	-30 to 100°C (with BunaN seals)	0.15
YC00-*-D*-08-11-0YA				0.15

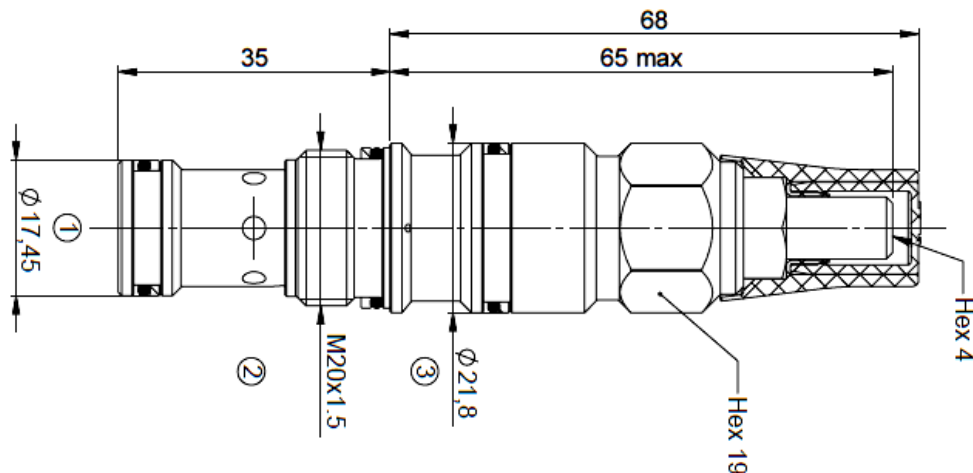
■ Model Number Designation

YC00	0	M	210	08	11	0YA	10
Series Number	seals	Spring (bar)	Setting Range (bar)	Pilot Ratio	Cavity	Setting	Design No
YC00 : Load Holding Cartridge Valve	0 : Buna 2 : Viton	M : 70 ~ 210	210 : 210	08 : 8:1	11 : YC11A	0YA : Adjustable Setting	10
		D : 140 ~350	350 : 350				

* Refer page 3/3 for cartridge valves with valve body.

■ YC00-*-08-11-0YA-10

Dimensions in Millimeters



Technical Details

cavity	YC11A
Capacity	60 lpm (16gpm)
max. operating pressure	350 bar
pilot ratio	8:1
pressure increase per turn	93 bar (spring D) 50 bar (spring M)
pressure setting established @	cracking pressure (1 in 3/min)
operating characteristic	Standard
reseal	>85%
max.recommended load pressure at maximum setting	270bar
valve hex size	19
valve installation torque	40-45 Nm (30-35 lbf ft)
adjustment screw internal hex size	4
seal-lock hex size	13
seal-lock torque	12-15 Nm (9-11 lbf ft)
external component surface treatment	zinc plating
fluids	mineral based or synthetics with lubricating properties at viscosities of 10 to 500 mm ² /s (cSt)
filtration	Nominal value max. 10µm(NAS 8)/ ISO 4406 19/17/20

Note

- Turn adjustment clockwise to increase setting.
- Backpressure at port 2 adds to the effective relief setting at a ratio of 1 plus the pilot ratio times the backpressure.
- Set counterbalance valve at least 1.3 times the maximum load induced pressure.
- Declared reseal valve is obtained with valve set @ maximum setting.

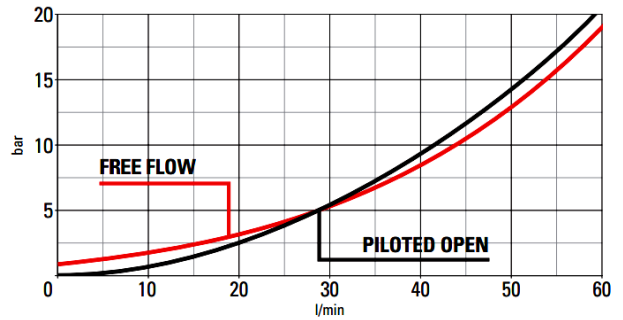
Ordering Information

Example : Load Holding Cartridge Valves having a pilot ratio of 8:1 and pressure range of 70 ~ 210 bar with Buna seals and setting pressure of 210 bar : YC00-0-M-210-08-11-0YA-10, Material Number : 1000037259

Sl.No	Model code	Material Number
1 *	YC00-0-M-210-08-11-0YA-10	1000037259
2	YC00-0-D-350-08-11-0YA-10	1000037260
3	YC00-2-M-210-08-11-0YA-10	1000037261
4	YC00-2-D-350-08-11-0YA-10	1000037262

* Preferred series.

Performance Curves



Cavity Details

CAVITY CODE # : YC11A

* Refer separate sheet for cavity details.

Seal Kit

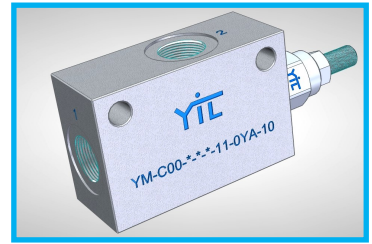
SEAL KIT			
Sl.No	Description	Model code	Material Number
1	Buna N	Y-S00T11ASN900000	1000037313
2	Viton	Y-S00T11ASV900000	1000037314



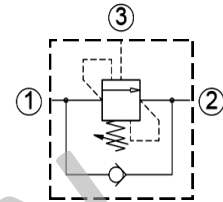
LOAD HOLDING CARTRIDGE VALVES

YC Series Load Holding cartridge Valves with Valve Body

Load holding cartridge valves along with valve body with internal and external pilot are used to control overrunning load, The check valve allows free flow from the directional valve (port 2) to the load (port 1) while a direct-acting, pilot-assisted relief valve controls flow from port 1 to port 2. Pilot assist at port 3 lowers the effective setting of the relief valve at a rate determined by the pilot ratio.



Graphical symbol



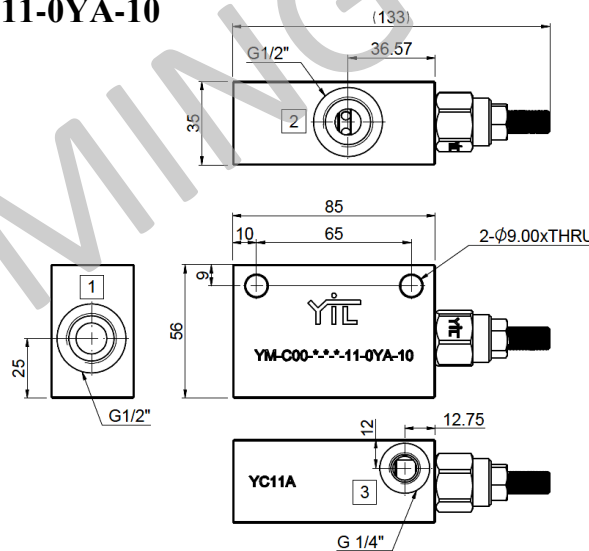
Features

- Line mounted.
- Two hole mounting

Model Number Designation

YM-C00	0	M	210	08	11	0YA	10
Series Number	seals	Spring (bar)	Setting Range (bar)	Pilot Ratio	Cavity	Setting	Design No
YM-C00 : Load Holding Cartridge Valve With Valve Body	0 : Buna	M : 70 ~ 210	210 : 210	08 : 8:1	11 : YC11A	0YA : Adjustable Setting	10
	2 : Viton	D : 140 ~ 350	350 : 350				

YM-C00-0-M-210-08-11-0YA-10



Dimensions in Millimeters

Ordering Information

Example : Load Holding Cartridge Valves with valve body having a pilot ratio of 8:1 and pressure range of 70 ~ 210 bar with Buna seals and setting pressure of 210 bar : **YM-C00-0-M-210-08-11-0YA-10**, Material Number : **1000000******

Sl.No	Model code	Material Number
1	YM-C00-0-M-210-08-11-0YA-10	1000000**
2	YM-C00-0-D-350-08-11-0YA-10	1000000**
3	YM-C00-2-M-210-08-11-0YA-10	1000000**
4	YM-C00-2-D-350-08-11-0YA-10	1000000**

For further information contact us
YUKEN INDIA LTD.

P. B. No. 5, Koppalthimmanahalli Village,
H. Hosakote Gram Panchayat, Lakkur Hobli,
Malur Taluk, Kolar District- 563130, Karnataka
Email: marketing@yukenindia.com

YC Series Load Holding Cartridge Valves



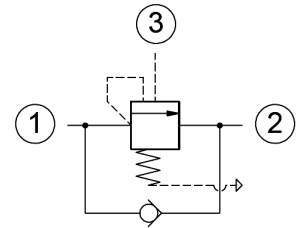
LOAD HOLDING CARTRIDGE VALVES

■ YC Series Vented Load Holding Cartridge Valves

Vented Load holding cartridge valves with internal and external pilot are used to control overrunning load, The check valve allows free flow from the directional valve (port 2) to the load (port 1) while a direct-acting, pilot-assisted relief valve controls flow from port 1 to port 2. Pilot assist at port 3 lowers the effective setting of the relief valve at a rate determined by the pilot.



Graphical symbol



■ Features

- 3:1 pilot ratio with adjustable setting.
- Maximum operating pressure 350 bar.
- Minimum setting pressure 70 bar.
- Maximum flow rate 60 lpm.
- Maximum valve leakage at reseal : 5 drops/minute.

■ Specifications

Model Numbers	Pilot ratio	Max.Flow (lpm)	Temperature Range	Mass kg(Approx)
YC02-*-M-*-03-11-0YA	3:1	60	-30 to 100°C (with BunaN seals)	0.15
YC02-*-D-*-03-11-0YA				0.15

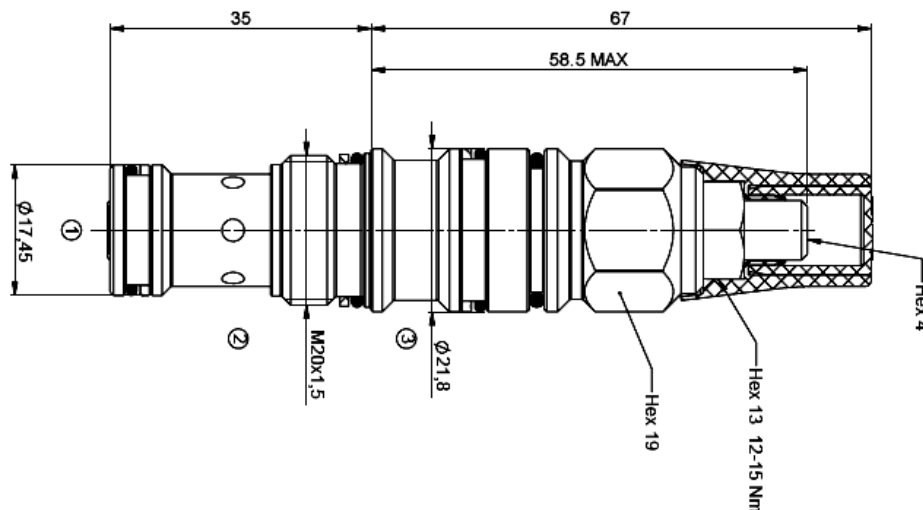
■ Model Number Designation

YC02	0	M	210	03	11	0YA	10
Series Number	seals	Spring (bar)	Setting Range (bar)	Pilot Ratio	Cavity	Setting	Design No
YC02 : Vented Load Holding Cartridge Valve	0 : Buna 2 : Viton	M : 70 ~ 210	210 : 210	03 : 3:1	11 : YC11A	0YA : Adjustable Setting	10
		D : 140 ~ 350	350 : 350				

* Refer page 3/3 for cartridge valves with valve body.

■ YC02-*-*-03-11-0YA-10

Dimensions in Millimeters



■ Technical Details

cavity	YC11A
Capacity	60 lpm (16gpm)
max. operating pressure	350 bar
pilot ratio	3:1
pressure increase per turn	166 bar (spring D) 109 bar (spring M)
pressure setting established @	cracking pressure (1 in 3/min)
operating characteristic	Standard
reseal	>85%
max.recommended load pressure at maximum setting	270bar
valve hex size	19
valve installation torque	40-45 Nm (30-35 lbf ft)
adjustment screw internal hex size	4
seal-lock hex size	13
seal-lock torque	12-15 Nm (9-11 lbf ft)
external component surface treatment	zinc plating
fluids	mineral based or synthetics with lubricating properties at viscosities of 10 to 500 mm ² /s (cSt)
filtration	Nominal value max. 10µm(NAS 8)/ ISO 4406 19/17/20

■ Note

- Turn adjustment clockwise to increase setting.
- Backpressure at port 2 adds to the effective relief setting at a ratio of 1 plus the pilot ratio times the backpressure.
- Set counterbalance valve at least 1.3 times the maximum load induced pressure.
- Declared reseal valve is obtained with valve set @ maximum setting.

■ Ordering Information

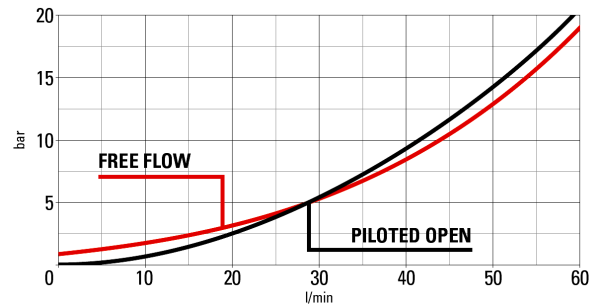
Example : Load Holding Cartridge Valves having a pilot ratio of 3:1 and pressure range of 70 ~ 210 bar with Buna seals and setting pressure of 210 bar : YC02-0-M-210-03-11-0YA-10, Material Number : 1000037263

Sl.No	Model code	Material Number
1	YC02-0-M-210-03-11-0YA-10	1000037263
2	YC02-0-D-350-03-11-0YA-10	1000037264
3	YC02-2-M-210-03-11-0YA-10	1000037265
4	YC02-2-D-350-03-11-0YA-10	1000037266

■ Seal Kit

SEAL KIT			
Sl.No	Description	Model code	Material Number
1	Buna N	Y-S00T11ASN900000	1000037313
2	Viton	Y-S00T11ASV900000	1000037314

■ Performance Curves



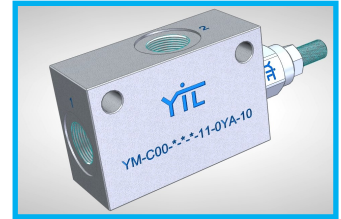
■ Cavity Details

CAVITY CODE # : YC11A

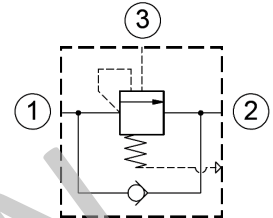
* Refer separate sheet for cavity details.

YC Series Vented Load Holding cartridge Valves with Valve Body

Vented Load holding cartridge valves along with valve body with internal and external pilot are used to control overrunning load, The check valve allows free flow from the directional valve (port 2) to the load (port 1) while a direct-acting, pilot-assisted relief valve controls flow from port 1 to port 2. Pilot assist at port 3 lowers the effective setting of the relief valve at a rate determined by the pilot ratio of 3:1 and with reverse check flow .



Graphical symbol



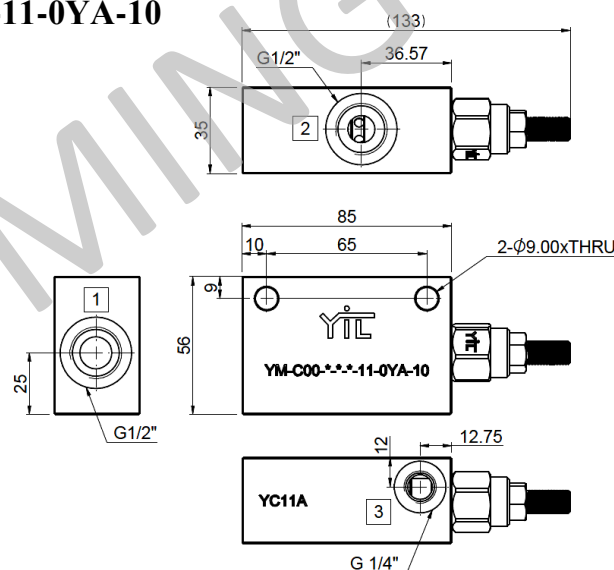
Features

- Line mounted.
- Two hole mounting

Model Number Designation

YM-C02	0	T	210	05	11	0YA	10
Series Number	seals	Spring (bar)	Setting Range (bar)	Pilot Ratio	Cavity	Setting	Design No
YM-C02 : Vented Load Holding Cartridge Valve With Valve Body	0 : Buna	M : 70 ~ 210	210 : 210	03 : 3:1	11 : YC11A	0YA : Adjustable Setting	10
	2 : Viton	D : 140~350	350 : 350				

YM-C02-*-**-03-11-0YA-10



Dimensions in Millimeters

Ordering Information

Example : Load Holding Cartridge Valves with valve body having a pilot ratio of 3:1 and pressure range of 70 ~ 210 bar with setting pressure of 210 bar : **YM-C02-0-M-210-03-11-0YA-10**, Material Number : **10000000******

Sl.No	Model code	Material Number
1	YM-C02-0-T-210-03-11-0YA-10	10000000**
2	YM-C02-0-D-350-03-11-0YA-10	10000000**
3	YM-C02-2-T-210-03-11-0YA-10	10000000**
4	YM-C02-2-D-350-03-11-0YA-10	10000000**

For further information contact us
YUKEN INDIA LTD.

P. B. No. 5, Koppalthimmanahalli Village,
H. Hosakote Gram Panchayat, Lakkur Hobli,
Malur Taluk, Kolar District- 563130, Karnataka
Email: marketing@yukenindia.com

YC Series Load Holding Cartridge Valves



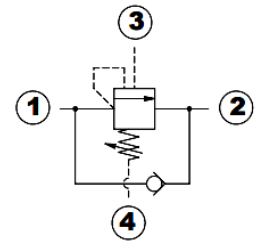
LOAD HOLDING CARTRIDGE VALVES

YC Series Drained Load Holding Cartridge Valves

Drained Load holding cartridge valves with internal and external pilot are used to control overrunning load, The check valve allows free flow from the directional valve (port 2) to the load (port 1) while a direct-acting, pilot-assisted relief valve controls flow from port 1 to port 2. Pilot assist at port 3 lowers the effective setting of the relief valve at a rate determined by the pilot ratio.



Graphical symbol



Features

- 3:1, 8:1 pilot ratio with adjustable setting.
- Maximum operating pressure 420 bar.
- Maximum flow rate 60 lpm.
- Maximum valve leakage at reseal : 5 drops/minute.

Specifications

Model Numbers	Pilot ratio	Max. Setting Pressure (bar)	Max. Flow (lpm)	Temperature Range	Mass kg(Approx)
YC03-*-M*-03-21-0YA	3:1	70~350	60	-30 to 100°C (with BunaN seals)	0.150
YC03-*-D*-03-21-0YA					0.150
YC03-*-M*-08-21-0YA	8:1	70~420			0.150
YC03-*-D*-08-21-0YA					0.150

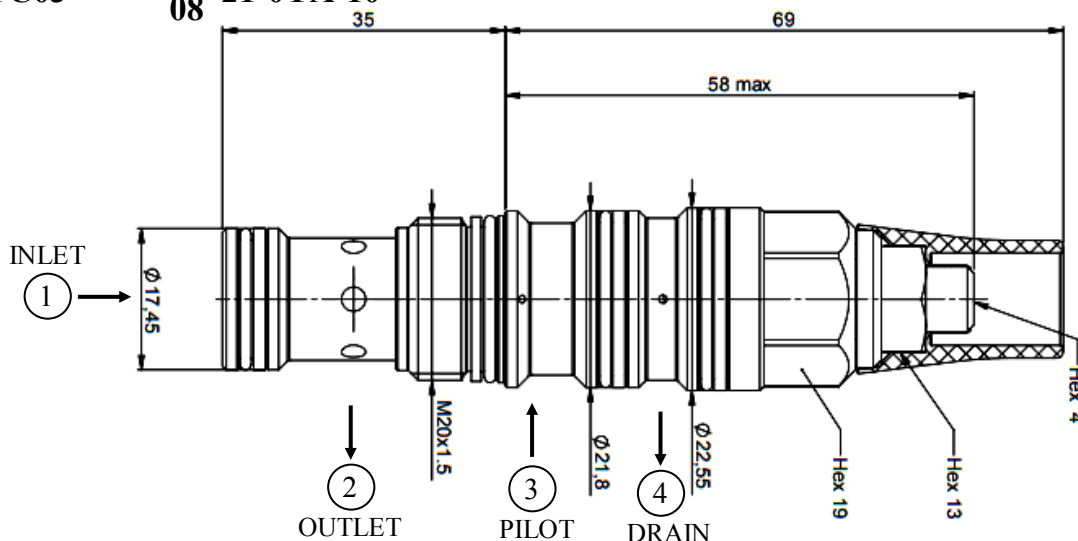
Model Number Designation

YC03	0	M	210	03	21	0YA	10
Series Number	seals	Spring (bar)	Setting Range (bar)	Pilot Ratio	Cavity	Setting	Design No
YC03 : Drained Load Holding Cartridge Valve	0 : Buna 2 : Viton	M : 70 ~ 210	210 : 210	03 : 3:1	21 : YC21A	0YA : Adjustable setting	10
		D : 140 ~ 350	350 : 350				
		M : 70 ~ 210	210 : 210	08 : 8:1			
		D : 140 ~ 420	420 : 420				

* Refer page 3/3 for cartridge valves with valve body.

YC03-*-*-03-08-21-0YA-10

Dimensions in Millimeters



YC Series Load Holding Cartridge Valves

Technical Details

cavity	YC21A
Capacity	60 lpm (16gpm)
max. operating pressure	420 bar(6000psi)
pilot ratio	3:1 , 8:1
pressure increase per turn for 3:1 pilot ratio	109 bar (spring M) 166 bar (spring D)
pressure increase per turn for 8:1 pilot ratio	109 bar (spring M) 166 bar (spring D)
pressure setting established @	cracking pressure (1 in 3/min)
operating characteristic	drained
reseal	>85%
max.recommended load pressure at maximum setting	270 bar(3:1 pilot ratio) 330 bar(8:1 pilot ratio)
valve hex size	19
valve installation torque	40-45 Nm (30-35 lbf ft)
adjustment screw internal hex size	4
seal-lock hex size	13
seal-lock torque	12-15 Nm (9-11 lbf ft)
external component surface treatment	zinc plating
fluids	mineral based or synthetics with lubricating properties at viscosities of 10 to 500 mm ² /s (cSt)
filtration	Nominal value max. 10µm(NAS 8)/ ISO 4406 19/17/26

Note

- Turn adjustment clockwise to increase setting.
- Operation of all functions are independent of back pressure at port 2 , and the fact that the spring chamber is drained to port 4.
- Set counterbalance valve at least 1.3 times the maximum load induced pressure.
- This valve is not provided with positive seals on the pilot section.

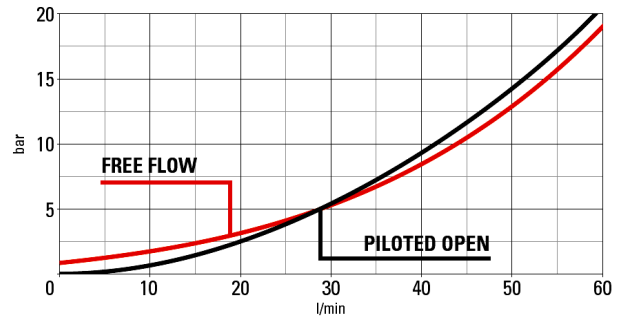
Ordering Information

Example : Load Holding Cartridge Valves having a pilot ratio of 3:1 and pressure range of 70 ~ 210 bar with Buna seals and setting pressure of 210 bar : **YC03-0-M-210-03-21-0YA-10**, Material Number : **1000037267**

Sl.No	Model code	Material Number
1	YC03-0-M-210-03-21-0YA-10	1000037267
2 *	YC03-0-D-350-03-21-0YA-10	1000037268
3	YC03-2-M-210-03-21-0YA-10	1000037269
4	YC03-2-D-350-03-21-0YA-10	1000037270
5	YC03-0-M-210-08-21-0YA-10	1000037271
6	YC03-0-D-350-08-21-0YA-10	1000037272
7	YC03-2-M-210-08-21-0YA-10	1000037273
8	YC03-2-D-420-08-21-0YA-10	1000037274

* Preferred series.

Performance Curves



Cavity Details

CAVITY CODE # : **YC21A**

* Refer separate sheet for cavity details.

Seal Kit

SEAL KIT			
Sl.No	Description	Model code	Material Number
1	Buna N	Y-S00T11ASN900000	1000037313
2	Viton	Y-S00T11ASV900000	1000037314



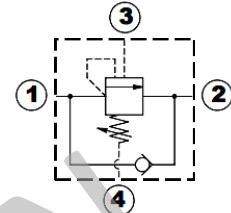
LOAD HOLDING CARTRIDGE VALVES

YC Series Drained Load Holding cartridge Valves with Valve Body

Drained Load holding cartridge valves along with valve body with internal and external pilot are used to control overrunning load, The check valve allows free flow from the directional valve (port 2) to the load (port 1) while a direct-acting, pilot-assisted relief valve controls flow from port 1 to port 2. Pilot assist at port 3 lowers the effective setting of the relief valve at a rate determined by the pilot ratio.



Graphical symbol



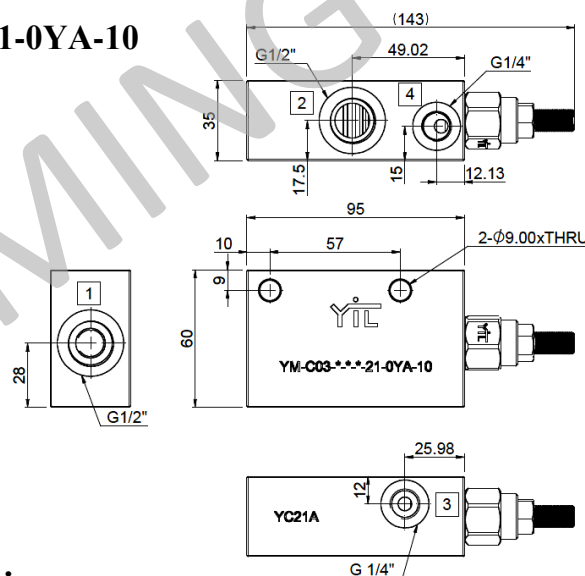
Features

- Line mounted.
- Two bolt mounting.

Model Number Designation

YM-C03	0	M	210	03	21	0YA	10
Series Number	seals	Spring (bar)	Setting Range (bar)	Pilot Ratio	Cavity	Setting	Design No
YM-C03 : Drained Load Holding Cartridge Valve With Valve body	0 : Buna 2 : Viton	M : 70 ~ 210	210 : 210	03 : 3:1	21 : YC21A	0YA : Adjustable setting	10
		D : 140 ~ 350	350 : 350				
		M : 70 ~ 210	210 : 210	08 : 8:1			
		D : 140 ~ 420	420 : 420				

YM-C03-**-**-03-21-0YA-10



Dimensions in Millimeters

Ordering Information

Example : Load Holding Cartridge Valves with valve body having a pilot ratio of 3:1 and pressure range of 70 ~ 210 bar with setting pressure of 210 bar : **YM-C03-0-M-210-03-21-0YA-10**, Material Number : **10000000******

Sl.No	Model code	Material Number
1	YM-C03-0-M-210-03-21-0YA-10	10000000**
2	YM-C03-0-D-350-03-21-0YA-10	10000000**
3	YM-C03-2-M-210-03-21-0YA-10	10000000**
4	YM-C03-2-D-350-03-21-0YA-10	10000000**
5	YM-C03-0-M-210-08-21-0YA-10	10000000**
6	YM-C03-0-D-420-08-21-0YA-10	10000000**
7	YM-C03-2-M-210-08-21-0YA-10	10000000**
8	YM-C03-2-D-420-08-21-0YA-10	10000000**

For further information contact us
YUKEN INDIA LTD.

P. B. No. 5, Koppalthimmanahalli Village,
H. Hosakote Gram Panchayat, Lakkur Hobli,
Malur Taluk, Kolar District- 563130, Karnataka
Email: marketing@yukenindia.com



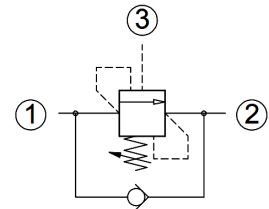
LOAD HOLDING CARTRIDGE VALVES

YC Series SP adjustable Load Holding Cartridge Valves

SP adjustable Load holding cartridge valves with internal and external pilot are used to control overrunning load, The check valve allows free flow from the directional valve (port 2) to the load (port 1) while a direct-acting, pilot-assisted relief valve controls flow from port 1 to port 2. Pilot assist at port 3 lowers the effective setting of the relief valve at a rate determined by the pilot ratio.



Graphical symbol



Features

- 3:1, 4:1 pilot ratio with adjustable setting.
- Maximum operating pressure 350 bar.
- Maximum flow rate 30 lpm.
- Maximum valve leakage at reseal : 5 drops/minute.

Specifications

Model Numbers	Pilot ratio	Max.Setting Pressure (bar)	Max.Flow (lpm)	Temperature Range	Mass kg(Approx)
YC04-*-T-105-03-11-0YA	3:1	30~105	30	-30 to 100°C (with BunaN seals)	0.130
YC04-*-M-280-03-11-0YA		70~280			
YC04-*-T-105-04-11-0YA	4:1	30~105			
YC04-*-M-280-04-11-0YA		70~280			0.150

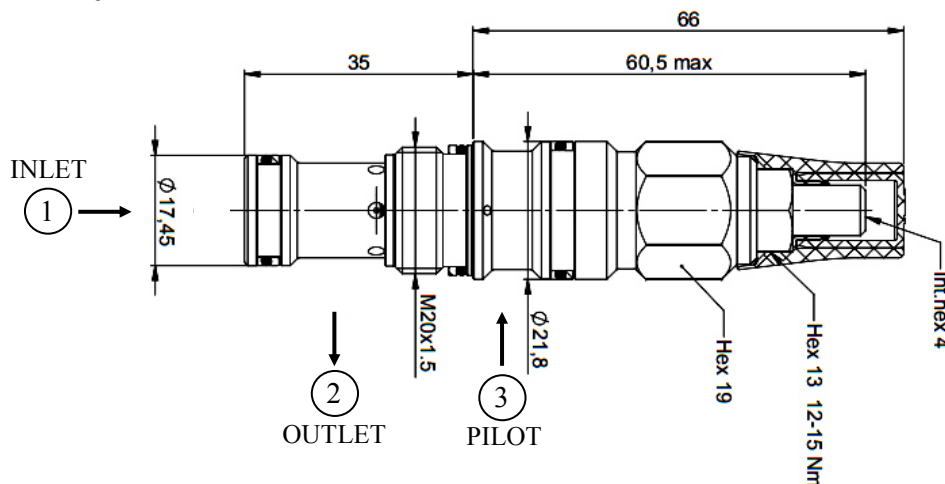
Model Number Designation

YC04	A	M	280	03	11	0YA	10
Series Number	seals	Spring (bar)	Setting Range (bar)	Pilot Ratio	Cavity	Setting	Design No
YC04 : SP adjustable Load Holding Cartridge Valve	A : Buna C : Viton	T : 30~105	105 : 105	03 : 3:1 04 : 4:1	11 : YC11A	0YA : Adjustable setting	10
		M : 70~280	280 : 280				

* Refer page 3/3 for cartridge valves with valve body.

YC04-*-*-*-03-11-0YA-10

Dimensions in Millimeters



Technical Details

cavity	YC11A
Capacity	30 lpm (8gpm)
max. operating pressure	350 bar
pilot ratio	3:1 , 4:1
pressure increase per turn	155 bar (spring M) 27 bar (spring T)
pressure setting established @	cracking pressure (1 in 3/min)
operating characteristic	Standard
reseal	>85%
max.recommended load pressure at maximum setting	230 bar(3350 psi)
valve hex size	19
valve installation torque	40-45 Nm (30-35 lbf ft)
adjustment screw internal hex size	4
seal-lock hex size	13
seal-lock torque	12-15 Nm (9-11 lbf ft)
external component surface treatment	zinc plating
fluids	mineral based or synthetics with lubricating properties at viscosities of 10 to 500 mm ² /s (cSt)
filtration	Nominal value max. 10µm(NAS 8)/ ISO 4406 19/17/26

Note

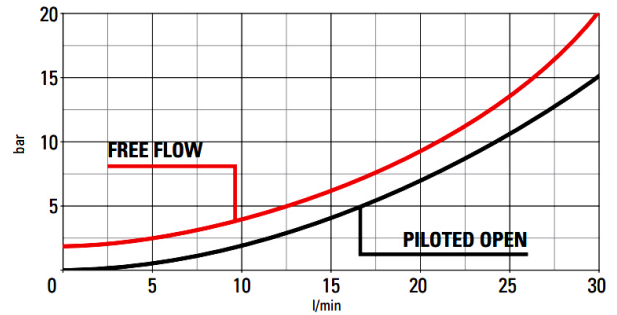
- Turn adjustment clockwise to increase setting.
- Operation of all functions are independent of back pressure at port 2 , and the fact that the spring chamber is drained to port 4.
- Set counterbalance valve at least 1.3 times the maximum load induced pressure.
- Declared reseal valve is obtained with valve set @ maximum setting.

Ordering Information

Example : Load Holding Cartridge Valves having a pilot ratio of 3:1 and pressure range of 70 ~ 280 bar with Buna seals and setting pressure of 280 bar : **YC04-A-M-280-03-11-0YA-10**, Material Number : **1000037276**

Sl.No	Model code	Material Number
1	YC04-A-T-105-03-11-0YA-10	1000037275
2	YC04-A-M-280-03-11-0YA-10	1000037276
3	YC04-C-T-105-03-11-0YA-10	1000037277
4	YC04-C-M-280-03-11-0YA-10	1000037278
5	YC04-A-T-105-04-11-0YA-10	1000037279
6	YC04-A-M-280-04-11-0YA-10	1000037280
7	YC04-C-T-105-04-11-0YA-10	1000037281
8	YC04-C-M-280-04-11-0YA-10	1000037282

Performance Curves



Cavity Details

CAVITY CODE # : **YC11A**

* Refer separate sheet for cavity details.

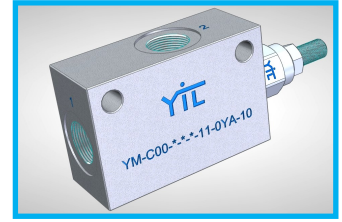
Seal Kit

SEAL KIT

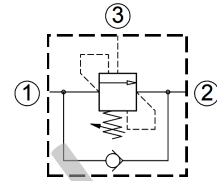
Sl.No	Description	Model code	Material Number
1	Buna N	Y-S00T11ASN900000	1000037313
2	Viton	Y-S00T11ASV900000	1000037314

■ YC Series SP Adjustable Load Holding cartridge Valves with Valve Body

SP Adjustable Load holding cartridge valves along with valve body with internal and external pilot are used to control overrunning load, The check valve allows free flow from the directional valve (port 2) to the load (port 1) while a direct-acting, pilot-assisted relief valve controls flow from port 1 to port 2. Pilot assist at port 3 lowers the effective setting of the relief valve at a rate determined by the pilot ratio.



Graphical symbol



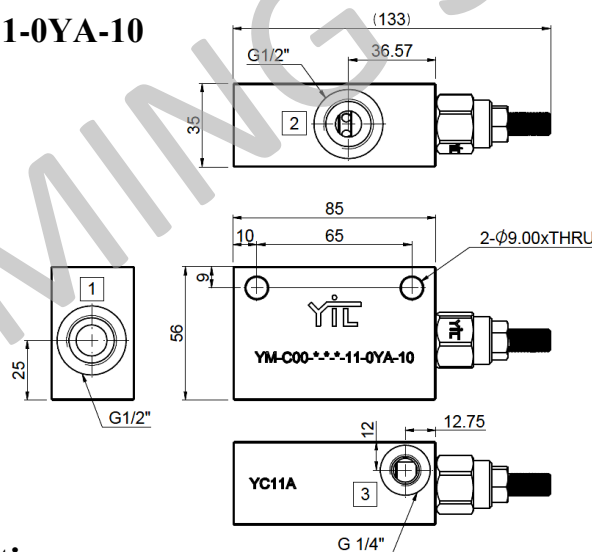
■ Features

- Line mounted.
- Two bolt mounting.

■ Model Number Designation

YM-C04	A	M	280	03	11	0YA	10
Series Number	seals	Spring (bar)	Setting Range (bar)	Pilot Ratio	Cavity	Setting	Design No
YM-C04 : SP adjustable Load Holding Cartridge Valve with Valve Body	A : Buna C : Viton	T : 30~105	105 : 105	03 : 3:1 04 : 4:1	11 : YC11A	0YA : Adjustable setting	10
		M : 70~280	280 : 280				

■ YM-C04-**-**-03-11-0YA-10



■ Ordering Information

Example : Load Holding Cartridge Valves with valve body having a pilot ratio of 3:1 and pressure range of 70 ~ 280 bar with setting pressure of 280 bar : **YM-C04-A-M-280-03-11-0YA-10**, Material Number : **10000000******

Sl.No	Model code	Material Number
1	YM-C04-A-T-105-03-11-0YA-10	20000000**
2	YM-C04-A-T-105-04-11-0YA-10	20000000**
3	YM-C04-C-T-105-03-11-0YA-10	20000000**
4	YM-C04-C-T-105-04-11-0YA-10	20000000**
5	YM-C04-A-M-280-03-11-0YA-10	20000000**
6	YM-C04-A-M-280-04-11-0YA-10	20000000**
7	YM-C04-C-M-280-03-11-0YA-10	20000000**
8	YM-C04-C-M-280-04-11-0YA-10	20000000**

For further information contact us
YUKEN INDIA LTD.

P. B. No. 5, Koppathimmanahalli Village,
H. Hosakote Gram Panchayat, Lakkur Hobli,
Malur Taluk, Kolar District- 563130, Karnataka
Email: marketing@yukenindia.com



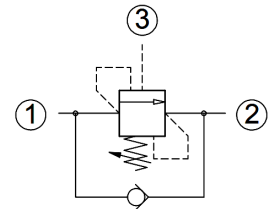
LOAD HOLDING CARTRIDGE VALVES

■ YC Series adjustable Load Holding Cartridge Valves

Adjustable Load holding cartridge valves with internal and external pilot are used to control overrunning load, The check valve allows free flow from the directional valve (port 2) to the load (port 1) while a direct-acting, pilot-assisted relief valve controls flow from port 1 to port 2. Pilot assist at port 3 lowers the effective setting of the relief valve at a rate determined by the pilot ratio.



Graphical symbol



■ Features

- 3:1 pilot ratio with adjustable setting.
- Maximum operating pressure 350 bar.
- Maximum flow rate 75 lpm.
- Maximum valve leakage at reseal : 5 drops/minute.

■ Specifications

Model Numbers	Pilot ratio	Max.Setting Pressure (bar)	Max.Flow (lpm)	Temperature Range	Mass kg(Approx)
YC20-*-T-95-03-11-0YA	3:1	30~95	75	-30 to 100°C (with BunaN seals)	0.150
YC20-*-M-155-03-11-0YA		70~155			
YC20-*-D-265-03-11-0YA		140~265			

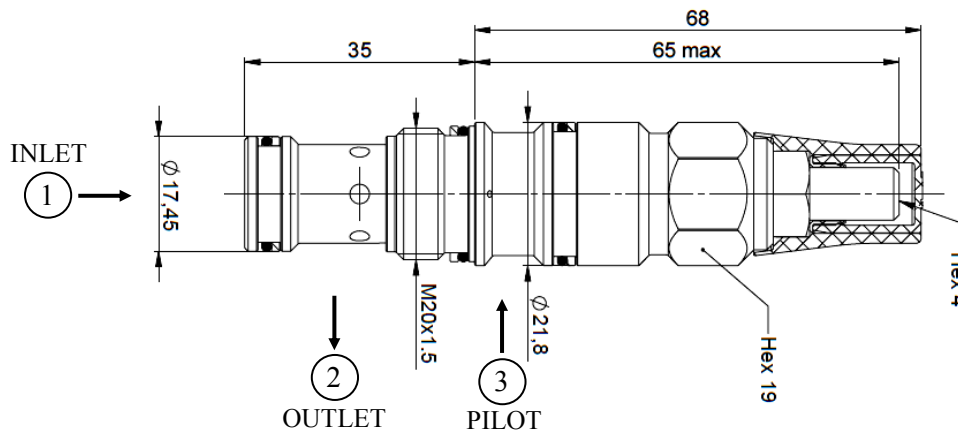
■ Model Number Designation

YC20	0	M	280	03	11	0YA	10
Series Number	seals	Spring (bar)	Setting Range (bar)	Pilot Ratio	Cavity	Setting	Design No
YC20 : adjustable Load Holding Cartridge Valve	0 : Buna 2 : Viton	T : 30~105	105 : 105	03 : 3:1	11 : YC11A	0YA : Adjustable setting	10
		M : 70~155	155 : 155				
		D : 140~265	265 : 265				

* Refer page 3/3 for cartridge valves with valve body.

■ YC20-*-*-03-11-0YA-10

Dimensions in Millimeters



Technical Details

cavity	YC11A
Capacity	75 lpm (20gpm)
max. operating pressure	350 bar
pilot ratio	3:1
pressure increase per turn	33 bar (spring T) 132 bar (spring M) 206 bar (spring D)
pressure setting established @	cracking pressure (1 in 3/min)
operating characteristic	Standard
reseal	>85%
max.recommended load pressure at maximum setting	210 bar(3000 psi)
valve hex size	19
valve installation torque	40-45 Nm (30-35 lbf ft)
adjustment screw internal hex size	4
seal-lock hex size	13
seal-lock torque	12-15 Nm (9-11 lbf ft)
external component surface treatment	zinc plating
fluids	mineral based or synthetics with lubricating properties at viscosities of 10 to 500 mm ² /s (cSt)
filtration	Nominal value max. 10µm(NAS 8)/ ISO 4406 19/17/26

Note

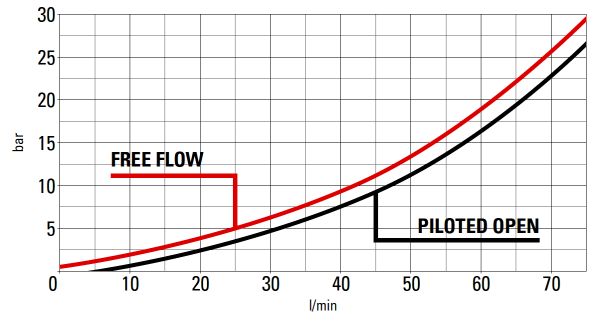
- Turn adjustment clockwise to increase setting.
- Backpressure at port 2 adds to the effective relief setting at a ratio of 1 plus the pilot ratio times the backpressure.
- Set counterbalance valve at least 1.3 times the maximum load induced pressure.
- Declared reseal valve is obtained with valve set @ maximum setting.

Ordering Information

Example : Load Holding Cartridge Valves having a pilot ratio of 3:1 and pressure range of 70 ~ 155 bar with Buna seals and setting pressure of 155 bar : **YC20-0-M-155-03-11-0YA-10**, Material Number : **1000037284**

Sl.No	Model code	Material Number
1	YC20-0-T-105-03-11-0YA-10	1000037283
2	YC20-0-M-155-03-11-0YA-10	1000037284
3	YC20-0-D-265-03-11-0YA-10	1000037285
4	YC20-2-T-105-03-11-0YA-10	1000037286
5	YC20-2-M-155-03-11-0YA-10	1000037287
6	YC20-2-D-265-03-11-0YA-10	1000037288

Performance Curves



Cavity Details

CAVITY CODE # : **YC11A**

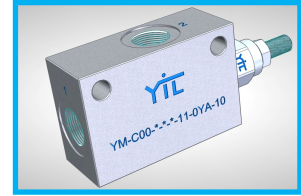
* Refer separate sheet for cavity details.

Seal Kit

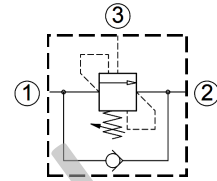
SEAL KIT			
Sl.No	Description	Model code	Material Number
1	Buna N	Y-S00T11ASN900000	1000037313
2	Viton	Y-S00T11ASV900000	1000037314

YC Series Adjustable Load Holding cartridge Valves with Valve Body

SP Adjustable Load holding cartridge valves along with valve body with internal and external pilot are used to control overrunning load, The check valve allows free flow from the directional valve (port 2) to the load (port 1) while a direct-acting, pilot-assisted relief valve controls flow from port 1 to port 2. Pilot assist at port 3 lowers the effective setting of the relief valve at a rate determined by the pilot ratio.



Graphical symbol



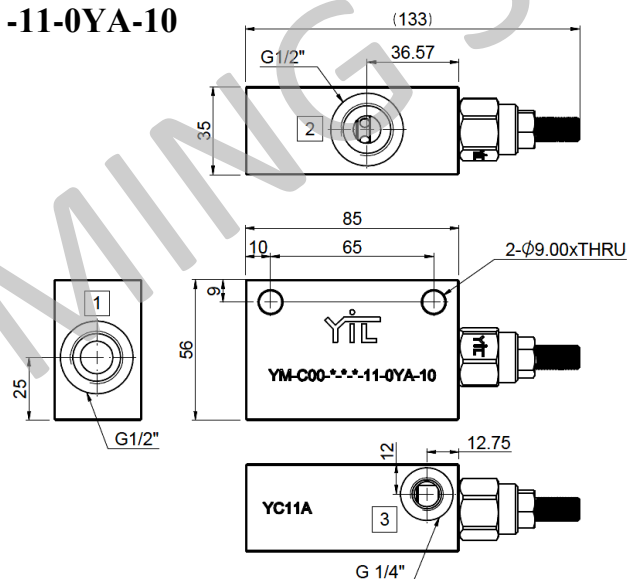
Features

- Line mounted.
- Two bolt mounting.

Model Number Designation

YM-C20	0	M	280	03	11	0YA	10
Series Number	seals	Spring (bar)	Setting Range (bar)	Pilot Ratio	Cavity	Setting	Design No
YM-C20 : adjustable Load Holding Cartridge Valve with Valve Body	0 : Buna 2 : Viton	T : 30~105	105 : 105	03 : 3:1	11 : YC11A	0YA : Adjustable setting	10
		M : 70~155	155 : 155				
		D : 140~265	265 : 265				

YM-C20-***-***-03-11-0YA-10



Ordering Information

Example : Load Holding Cartridge Valves with valve body having a pilot ratio of 3:1 and pressure range of 70 ~ 155 bar with setting pressure of 155 bar : **YM-C20-0-M-155-03-11-0YA-10**, Material Number : **1000000******

Sl.No	Model code	Material Number
1	YM-C20-0-T-105-03-11-0YA-10	1000000**
2	YM-C20-0-M-155-03-11-0YA-10	1000000**
3	YM-C20-0-D-265-03-11-0YA-10	1000000**
4	YM-C20-2-T-105-03-11-0YA-10	1000000**
5	YM-C20-2-M-155-03-11-0YA-10	1000000**
6	YM-C20-2-D-265-03-11-0YA-10	1000000**

For further information contact us
YUKEN INDIA LTD.

P. B. No. 5, Koppathimmanahalli Village,
H. Hosakote Gram Panchayat, Lakkur Hobli,
Malur Taluk, Kolar District- 563130, Karnataka
Email: marketing@yukenindia.com



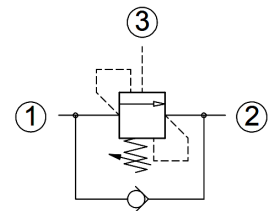
LOAD HOLDING CARTRIDGE VALVES

■ YC Series adjustable Load Holding Cartridge Valves

Adjustable Load holding cartridge valves with internal and external pilot are used to control overrunning load, The check valve allows free flow from the directional valve (port 2) to the load (port 1) while a direct-acting, pilot-assisted relief valve controls flow from port 1 to port 2. Pilot assist at port 3 lowers the effective setting of the relief valve at a rate determined by the pilot ratio.



Graphical symbol



■ Features

- 4:1 pilot ratio with adjustable setting.
- Maximum operating pressure 350 bar.
- Maximum flow rate 75 lpm.
- Maximum valve leakage at reseal : 5 drops/minute.

■ Specifications

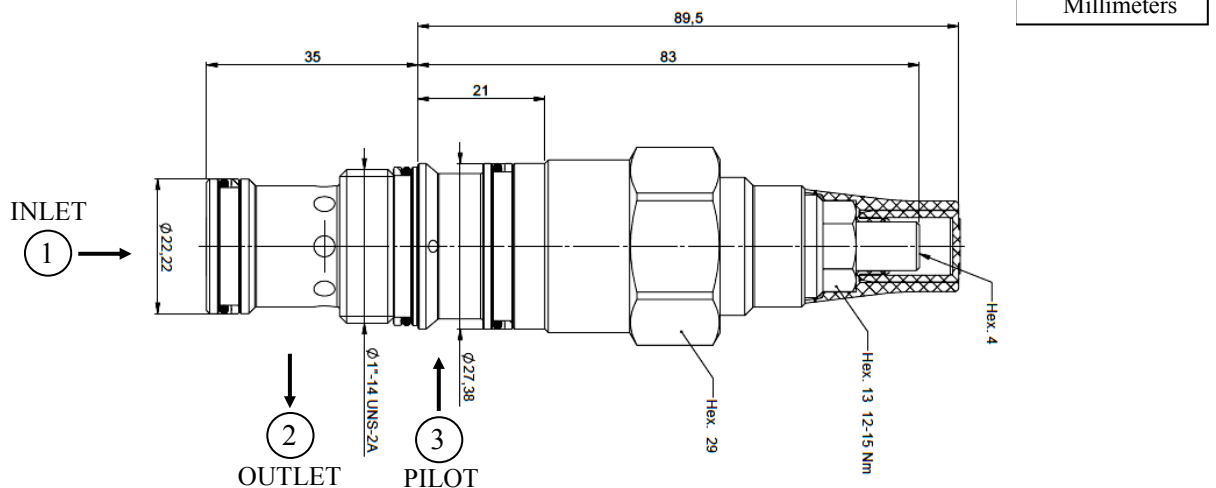
Model Numbers	Pilot ratio	Max.Setting Pressure (bar)	Max.Flow (lpm)	Temperature Range	Mass kg(Approx)
YC20-*-M-210-04-02-0YA	4:1	70~210	150	-30 to 100°C (with BunaN seals)	0.350
YC20-*-D-350-04-02-0YA		140~350			

■ Model Number Designation

YC20	0	M	210	04	02	0YA	10
Series Number	seals	Spring (bar)	Setting Range (bar)	Pilot Ratio	Cavity	Setting	Design No
YC20 : adjustable Load Holding Cartridge Valve	0 : Buna 2 : Viton	M : 70~210	210 : 210	04 : 4:1	02 : YC2A	0YA : Adjustable setting	10
		D : 140~350	350 : 350				

* Refer page 3/3 for cartridge valves with valve body.

■ YC20-*-*-04-02-0YA-10



■ Technical Details

cavity	YC2A
Capacity	150 lpm (38gpm)
max. operating pressure	350 bar
pilot ratio	4:1
pressure increase per turn	49 bar (spring M) 156 bar (spring D)
pressure setting established @	cracking pressure (1 in 3/min)
operating characteristic	Standard
reseal	>85%
max.recommended load pressure at maximum setting	230bar(3350 psi)
valve hex size	29
valve installation torque	60-70 Nm (44-52 lbf ft)
adjustment screw internal hex size	4
seal-lock hex size	13
seal-lock torque	12-15 Nm (9-11 lbf ft)
external component surface treatment	zinc plating
fluids	mineral based or synthetics with lubricating properties at viscosities of 10 to 500 mm ² /s (cSt)
filtration	Nominal value max. 10µm(NAS 8)/ ISO 4406 19/17/26

■ Note

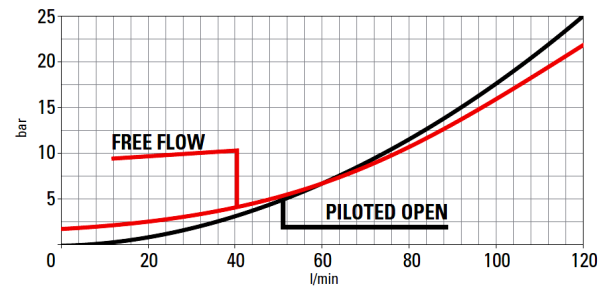
- Turn adjustment clockwise to increase setting.
- Backpressure at port 2 adds to the effective relief setting at a ratio of 1 plus the pilot ratio times the backpressure.
- Set counterbalance valve at least 1.3 times the maximum load induced pressure.
- Declared reseal valve is obtained with valve set @ maximum setting.

■ Ordering Information

Example : Load Holding Cartridge Valves having a pilot ratio of 4:1 and pressure range of 70 ~ 210bar with Buna seals and setting pressure of 210 bar : **YC20-0-M-210-04-02-0YA-10**, Material Number : **1000037289**

Sl.No	Model code	Material Number
1	YC20-0-M-210-04-02-0YA-10	1000037289
2	YC20-0-D-350-04-02-0YA-10	1000037290
3	YC20-2-M-210-04-02-0YA-10	1000037291
4	YC20-2-D-350-04-02-0YA-10	1000037292

■ Performance Curves



■ Cavity Details

CAVITY CODE # : YC2A

* Refer separate sheet for cavity details.

■ Seal Kit

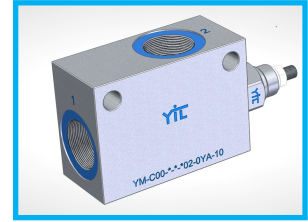
SEAL KIT			
Sl.No	Description	Model code	Material Number
1	Buna N	Y-S000T2ASN900000	1000037315
2	Viton	Y-S000T2ASV900000	1000037316



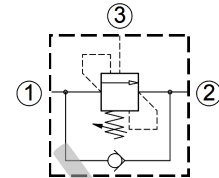
LOAD HOLDING CARTRIDGE VALVES

YC Series Adjustable Load Holding cartridge Valves with Valve Body

Adjustable Load holding cartridge valves along with valve body with internal and external pilot are used to control overrunning load, The check valve allows free flow from the directional valve (port 2) to the load (port 1) while a direct-acting, pilot-assisted relief valve controls flow from port 1 to port 2. Pilot assist at port 3 lowers the effective setting of the relief valve at a rate determined by the pilot ratio.



Graphical symbol



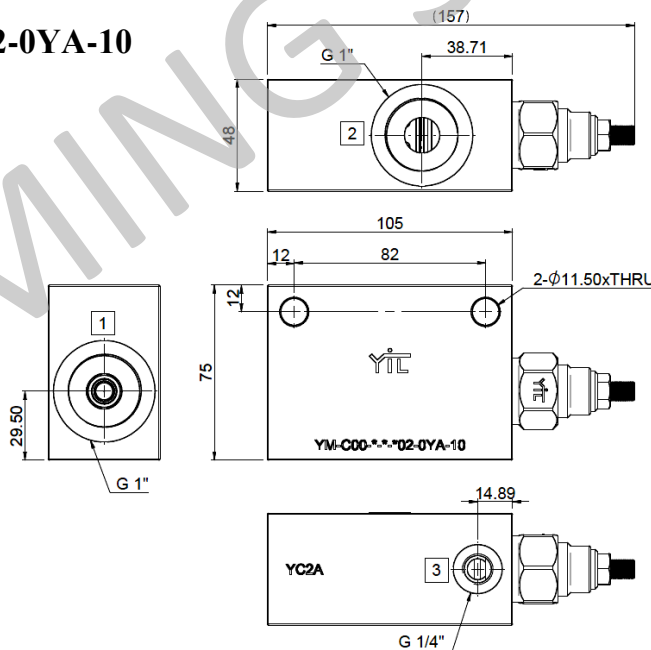
Features

- Line mounted.
- Two bolt mounting.

Model Number Designation

YM-C20	0	M	210	04	02	0YA	10
Series Number	seals	Spring (bar)	Setting Range (bar)	Pilot Ratio	Cavity	Setting	Design No
YM-C20 : adjustable Load Holding Cartridge Valve with Valve Body	0 : Buna	M : 70~210	210 : 210	04 : 4:1	02 : YC2A	0YA : Adjustable setting	10
	2 : Viton	D : 140~350	350 : 350				

YM-C20-**-**-04-02-0YA-10



Dimensions in Millimeters

Ordering Information

Example : Load Holding Cartridge Valves with valve body having a pilot ratio of 4:1 and pressure range of 70 ~ 155 bar with setting pressure of 155 bar : **YM-C20-0-M-210-04-02-0YA-10**, Material Number : **10000000******

Sl.No	Model code	Material Number
1	YM-C20-0-M-210-04-02-0YA-10	20000000**
2	YM-C20-0-D-350-04-02-0YA-10	20000000**
3	YM-C20-2-M-210-04-02-0YA-10	20000000**
4	YM-C20-2-D-350-04-02-0YA-10	20000000**

For further information contact us
YUKEN INDIA LTD.

P. B. No. 5, Koppathimmanahalli Village,
H. Hosakote Gram Panchayat, Lakkur Hobli,
Malur Taluk, Kolar District- 563130, Karnataka
Email: marketing@yukenindia.com



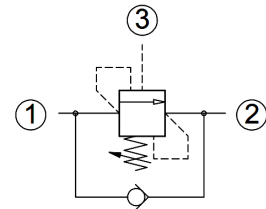
LOAD HOLDING CARTRIDGE VALVES

■ YC Series Ultra Fine Control Load Holding Cartridge Valves

Ultra fine Adjustable control Load holding cartridge valves with internal and external pilot are used to control overrunning load, The check valve allows free flow from the directional valve (port 2) to the load (port 1) while a direct-acting, pilot-assisted relief valve controls flow from port 1 to port 2. Pilot assist at port 3 lowers the effective setting of the relief valve at a rate determined by the pilot ratio.



Graphical symbol



■ Features

- 3:1, 4:1 pilot ratio with adjustable setting.
- Maximum operating pressure 350 bar.
- Minimum setting pressure 30 bar.
- Maximum flow rate 4 lpm.
- Maximum valve leakage at reseal : 5 drops/minute.

■ Specifications

Model Numbers	Pilot ratio	Max.Setting Pressure (bar)	Max.Flow (lpm)	Temperature Range	Mass kg(Approx)
YCD4-*-T-105-03-11-0YA	3:1	30~105	4	-30 to 100°C (with BunaN seals)	0.150
YCD4-*-M-280-03-11-0YA		70~280			
YCD4-*-T-105-04-11-0YA	4:1	30~105			
YCD4-*-M-280-04-11-0YA		70~280			

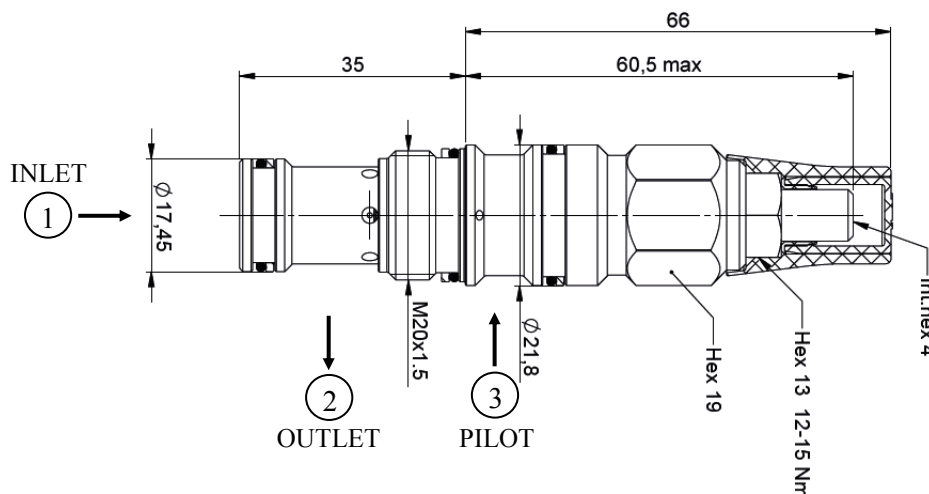
■ Model Number Designation

YCD4	A	M	280	03	11	0YA	10
Series Number	seals	Spring (bar)	Setting Range (bar)	Pilot Ratio	Cavity	Setting	Design No
YCD4 : Ultra fine adjustable Control Load Holding Cartridge Valve	A : Buna C : Viton	T : 30~105	105 : 105	03 : 3:1 04 : 4:1	11 :YC11A	0YA : Adjustable setting	10
		M : 70~280	280 : 280				

* Refer page 3/3 for cartridge valves with valve body.

■ YCD4- $\frac{A}{C}$ -*- *-11-0YA-10

Dimensions in Millimeters



Technical Details

cavity	YC11A
Capacity	4 lpm (1gpm)
max. operating pressure	350 bar
pilot ratio	3:1 , 4:1
pressure increase per turn	155 bar (spring M) 27 bar (spring T)
pressure setting established @	cracking pressure (1 in 3/min)
operating characteristic	Standard
reseat	>85%
max.recommended load pressure at maximum setting	230bar(3350 psi)
valve hex size	19
valve installation torque	40-45 Nm (30-35 lbf ft)
adjustment screw internal hex size	4
seal-lock hex size	13
seal-lock torque	12-15 Nm (9-11 lbf ft)
external component surface treatment	zinc plating
fluids	mineral based or synthetics with lubricating properties at viscosities of 10 to 500 mm ² /s (cSt)
filtration	Nominal value max. 10µm(NAS 8)/ ISO 4406 19/17/16

Note

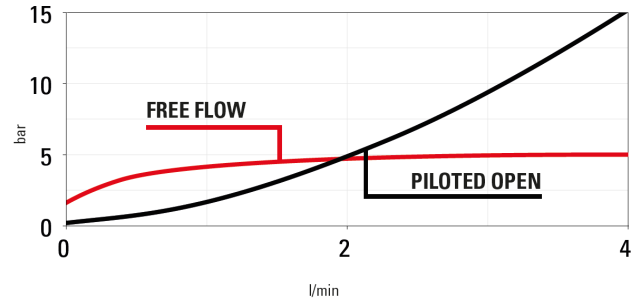
- Turn adjustment clockwise to increase setting.
- Backpressure at port 2 adds to the effective relief setting at a ratio of 1 plus the pilot ratio times the backpressure.
- Set counterbalance valve at least 1.3 times the maximum load induced pressure.
- Declared reseal valve is obtained with valve set @ maximum setting.

Ordering Information

Example : Ultra fine adjustable control Load Holding Cartridge Valves having a pilot ratio of 3:1 and pressure range of 30 ~ 105 bar with Buna seals and setting pressure of 105 bar : **YCD4-A-T-105-03-11-0YA-10**, Material Number : **1000037293**

Sl.No	Model code	Material Number
1	YCD4-A-T-105-03-11-0YA-10	1000037293
2	YCD4-A-M-280-03-11-0YA-10	1000037294
3	YCD4-C-T-105-03-11-0YA-10	1000037295
4	YCD4-C-M-280-03-11-0YA-10	1000037296
5	YCD4-A-T-105-04-11-0YA-10	1000037297
6	YCD4-A-M-280-04-11-0YA-10	1000037298
7	YCD4-C-T-105-04-11-0YA-10	1000037299
8	YCD4-C-M-280-04-11-0YA-10	1000037300

Performance Curves



Cavity Details

CAVITY CODE # : **YC11A**

* Refer separate sheet for cavity details.

Seal Kit

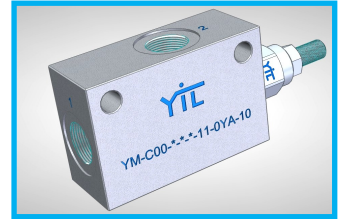
SEAL KIT

Sl.No	Description	Model code	Material Number
1	Buna N	Y-S00T11ASN900000	1000037313
2	Viton	Y-S00T11ASV900000	1000037314

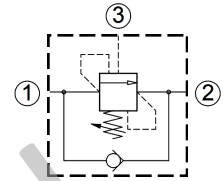
■ YC Series Ultra fine Adjustable control Load Holding cartridge

Valves with Valve Body

Ultra fine Adjustable control Load holding cartridge valves along with valve body with internal and external pilot are used to control overrunning load, The check valve allows free flow from the directional valve (port 2) to the load (port 1) while a direct-acting, pilot-assisted relief valve controls flow from port 1 to port 2. Pilot assist at port 3 lowers the effective setting of the relief valve at a rate determined



Graphical symbol



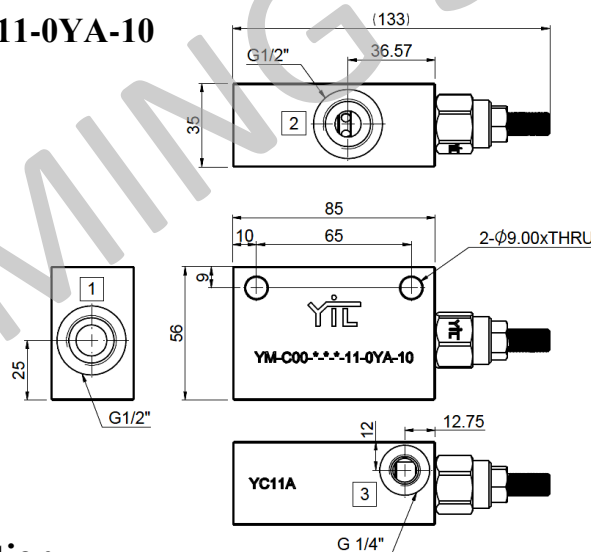
■ Features

- Line mounted.
- Two bolt mounting.

■ Model Number Designation

YM-CD4	A	M	280	03	11	0YA	10
Series Number	seals	Spring (bar)	Setting Range (bar)	Pilot Ratio	Cavity	Setting	Design No
YM-CD4 : Ultra fine adjustable Control Load Holding Cartridge Valve with Valve Body	A : Buna C : Viton	T : 30~105	105 : 105	03 : 3:1 04 : 4:1	11 : YC11A	0YA : Adjustable setting	10
		M : 70~280	280 : 280				

■ YM-CD4- $\frac{A}{C}$ -*- *-11-0YA-10



Dimensions in Millimeters

■ Ordering Information

Example : Ultra fine adjustable control Load Holding Cartridge Valves with valve body having a pilot ratio of 3:1 and pressure range of 30 ~ 105 bar with setting pressure of 105 bar : **YM-CD4-A-T-105-03-11-0YA-10**,
Material Number : **1000000******

Sl.No	Model code	Material Number
1	YM-CD4-A-T-105-03-11-0YA-10	1000000**
2	YM-CD4-A-M-280-03-11-0YA-10	1000000**
3	YM-CD4-A-T-105-04-11-0YA-10	1000000**
4	YM-CD4-A-M-280-04-11-0YA-10	1000000**
5	YM-CD4-C-T-105-03-11-0YA-10	1000000**
6	YM-CD4-C-M-280-03-11-0YA-10	1000000**
7	YM-CD4-C-T-105-04-11-0YA-10	1000000**
8	YM-CD4-C-M-280-04-11-0YA-10	1000000**

For further information contact us
YUKEN INDIA LTD.

P. B. No. 5, Koppalthimmanahalli Village,
H. Hosakote Gram Panchayat, Lakkur Hobli,
Malur Taluk, Kolar District- 563130, Karnataka
Email: marketing@yukenindia.com



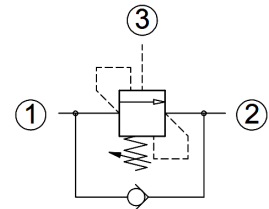
LOAD HOLDING CARTRIDGE VALVES

■ YC Series Fine Control Load Holding Cartridge Valves

Fine Adjustable control Load holding cartridge valves with internal and external pilot are used to control overrunning load, The check valve allows free flow from the directional valve (port 2) to the load (port 1) while a direct-acting, pilot-assisted relief valve controls flow from port 1 to port 2. Pilot assist at port 3 lowers the effective setting of the relief valve at a rate determined by the pilot ratio.



Graphical symbol



■ Features

- 3:1, 4:1 & 9:1 pilot ratio with adjustable setting.
- Maximum operating pressure 350 bar.
- Minimum setting pressure 30 bar.
- Maximum flow rate 15lpm.
- Maximum valve leakage at reseal : 5 drops/minute.

■ Specifications

Model Numbers	Pilot ratio	Max.Setting Pressure (bar)	Max.Flow (lpm)	Temperature Range	Mass kg(Approx)
YCW4-*-T-105-03-11-0YA	3:1	30~105	15	-30 to 100°C (with BunaN seals)	0.150
YCW4-*-M-280-03-11-0YA		70~280			
YCW4-*-T-105-04-11-0YA	4:1	30~105			
YCW4-*-M-280-04-11-0YA		70~280			
YCW4-*-T-105-09-11-0YA	9:1	30~105			
YCW4-*-M-280-09-11-0YA		70~280			

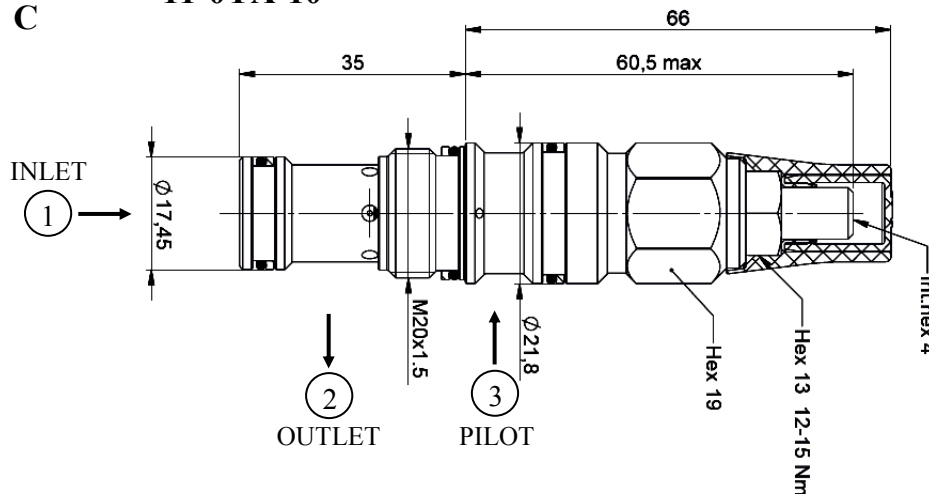
■ Model Number Designation

YCW4	A	M	280	03	11	0YA	10
Series Number	seals	Spring (bar)	Setting Range (bar)	Pilot Ratio	Cavity	Setting	Design No
YCW4 : Fine adjustable Control Load Holding Cartridge Valve	A : Buna C : Viton	T : 30~105	105 : 105	03 : 3:1	11 : YC11A	0YA : Adjustable setting	10
		M : 70~280	280 : 280	04 : 4:1 09 : 9:1			

* Refer page 3/3 for cartridge valves with valve body.

■ YCW4-^A/_C -*-*- *-11-0YA-10

Dimensions in Millimeters



YC Series Load Holding Cartridge Valves

Technical Details

cavity	YC11A
Capacity	15 lpm (4gpm)
max. operating pressure	350 bar
pilot ratio	3:1, 4:1, 9:1
pressure increase per turn	155 bar (spring M) 27 bar (spring T)
pressure setting established @	cracking pressure (1 in 3/min)
operating characteristic	Standard
reseal	>85%
max.recommended load pressure at maximum setting	230bar(3350 psi)
valve hex size	19
valve installation torque	40-45 Nm (30-35 lbf ft)
adjustment screw internal hex size	4
seal-lock hex size	13
seal-lock torque	12-15 Nm (9-11 lbf ft)
external component surface treatment	zinc plating
fluids	mineral based or synthetics with lubricating properties at viscosities of 10 to 500 mm ² /s (cSt)
filtration	Nominal value max. 10µm(NAS 8)/ ISO 4406 19/17/16

Note

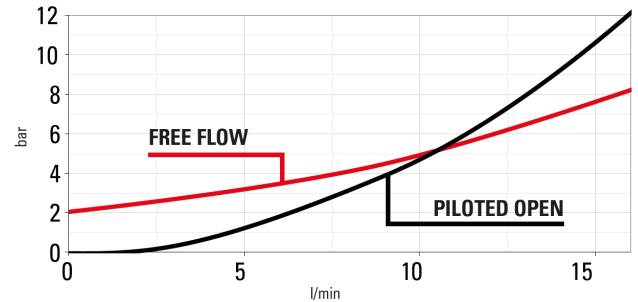
- Turn adjustment clockwise to increase setting.
- Backpressure at port 2 adds to the effective relief setting at a ratio of 1 plus the pilot ratio times the backpressure.
- Set counterbalance valve at least 1.3 times the maximum load induced pressure.
- Declared reseal valve is obtained with valve set @ maximum setting.

Ordering Information

Example : Fine adjustable control Load Holding Cartridge Valves having a pilot ratio of 3:1 and pressure range of 30 ~ 105 bar with Buna seals and setting pressure of 105 bar : YCW4-A-T-105-03-11-0YA-10, Material Number : **1000037301**

Sl.No	Model code	Material Number
1	YCW4-A-T-105-03-11-0YA-10	1000037301
2	YCW4-A-M-280-03-11-0YA-10	1000037302
3	YCW4-C-T-105-03-11-0YA-10	1000037303
4	YCW4-C-M-280-03-11-0YA-10	1000037304
5	YCW4-A-T-105-04-11-0YA-10	1000037305
6	YCW4-A-M-280-04-11-0YA-10	1000037306
7	YCW4-C-T-105-04-11-0YA-10	1000037307
8	YCW4-C-M-280-04-11-0YA-10	1000037308
9	YCW4-A-T-105-09-11-0YA-10	1000037309
10	YCW4-A-M-280-09-11-0YA-10	1000037310
11	YCW4-C-T-105-09-11-0YA-10	1000037311
12	YCW4-C-M-280-09-11-0YA-10	1000037312

Performance Curves



Cavity Details

CAVITY CODE # : YC11A

* Refer separate sheet for cavity details.

Seal Kit

SEAL KIT

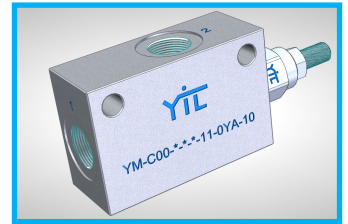
Sl.No	Description	Model code	Material Number
1	Buna N	Y-S00T11ASN900000	1000037313
2	Viton	Y-S00T11ASV900000	1000037314



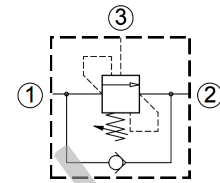
LOAD HOLDING CARTRIDGE VALVES

■ YC Series Fine Adjustable control Load Holding cartridge Valves with Valve Body

Fine Adjustable control Load holding cartridge valves along with valve body with internal and external pilot are used to control overrunning load, The check valve allows free flow from the directional valve (port 2) to the load (port 1) while a direct-acting, pilot-assisted relief valve controls flow from port 1 to port 2. Pilot assist at port 3 lowers the effective setting of the relief valve at a rate determined by the pilot ratio.



Graphical symbol



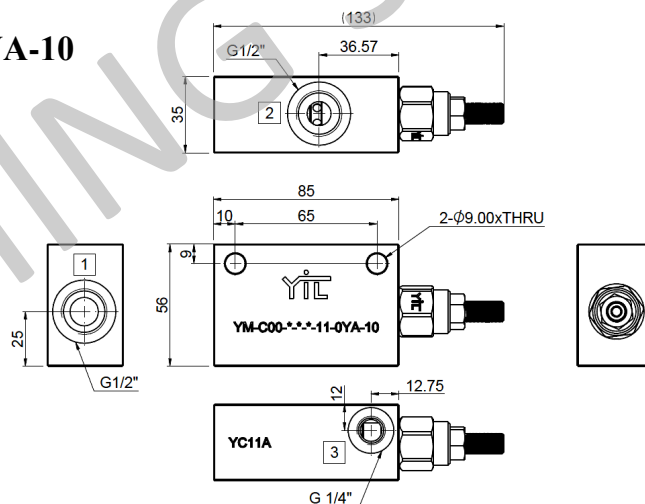
■ Features

- Line mounted.
- Two bolt mounting.

■ Model Number Designation

YM-CW4	A	M	280	03	11	0YA	10
Series Number	seals	Spring (bar)	Setting Range (bar)	Pilot Ratio	Cavity	Setting	Design No
YM-CW4 : Fine adjustable Control Load Holding Cartridge Valve with Valve Body	A : Buna C : Viton	T : 30~105	105 : 105	03 : 3:1 04 : 4:1 09 : 9:1	11 : YC11A	0YA : Adjustable setting	10
		M : 70~280	280 : 280				

■ YM-CW4-^A/_C -*- *-11-0YA-10



Dimensions in Millimeters

■ Ordering Information

Example : Fine adjustable control Load Holding Cartridge Valves with valve body having a pilot ratio of 3:1 and pressure range of 30 ~ 105 bar with setting pressure of 105 bar : **YM-CW4-A-T-105-03-11-0YA-10**, Material Number : **10000000******

Sl.No	Model code	Material Number
1	YM-CW4-A-T-105-03-11-0YA-10	10000000**
2	YM-CW4-A-M-280-03-11-0YA-10	10000000**
3	YM-CW4-A-T-105-04-11-0YA-10	10000000**
4	YM-CW4-A-M-280-04-11-0YA-10	10000000**
5	YM-CW4-A-T-105-09-11-0YA-10	10000000**
6	YM-CW4-A-M-280-09-11-0YA-10	10000000**
7	YM-CW4-C-T-105-03-11-0YA-10	10000000**
8	YM-CW4-C-M-280-03-11-0YA-10	10000000**
9	YM-CW4-C-T-105-04-11-0YA-10	10000000**
10	YM-CW4-C-M-280-04-11-0YA-10	10000000**
11	YM-CW4-C-T-105-09-11-0YA-10	10000000**
12	YM-CW4-C-M-280-09-11-0YA-10	10000000**

For further information contact us
YUKEN INDIA LTD.

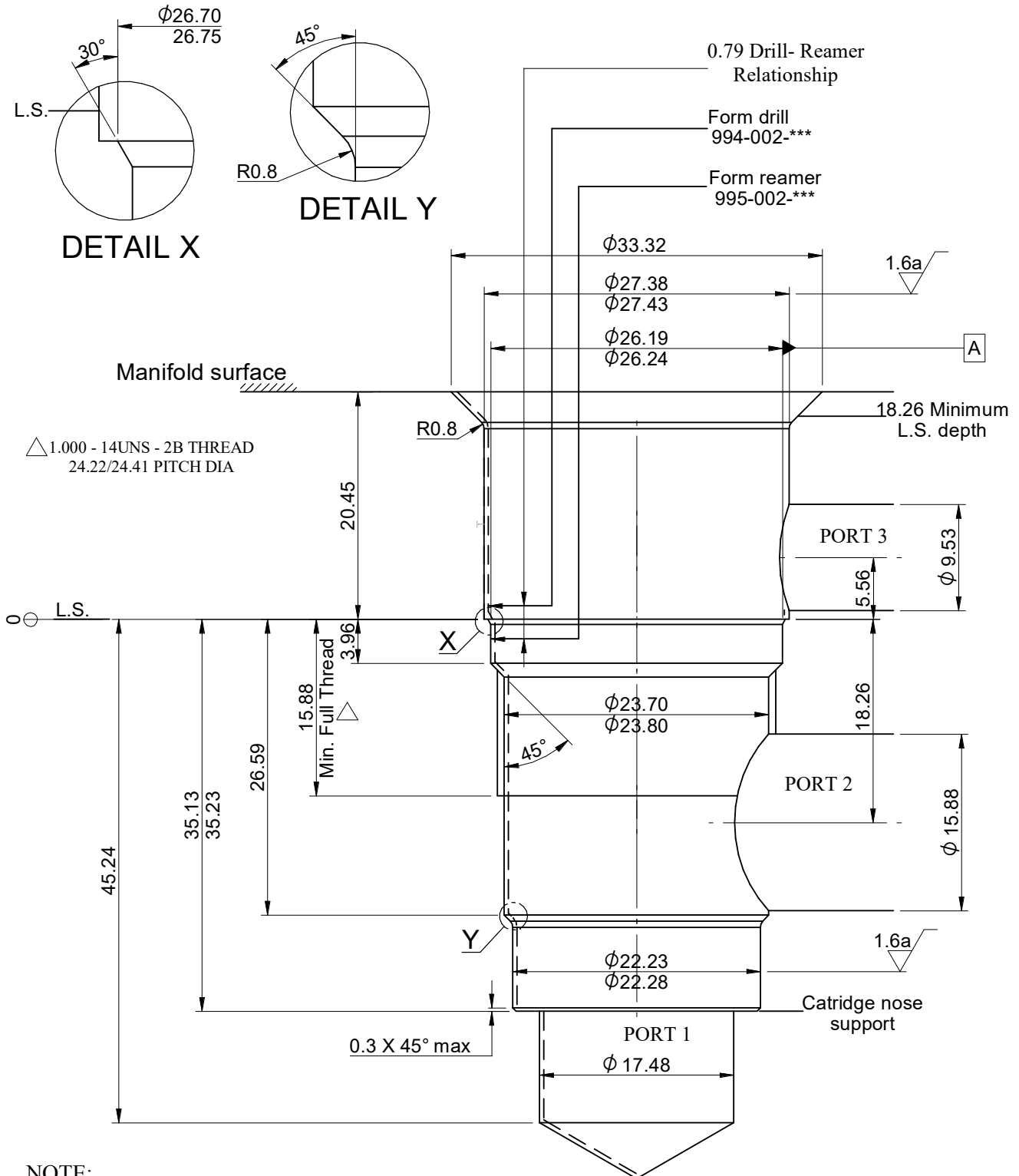
P. B. No. 5, Koppathimmanahalli Village,
H. Hosakote Gram Panchayat, Lakkur Hobli,
Malur Taluk, Kolar District- 563130, Karnataka
Email: marketing@yukenindia.com



LOAD HOLDING CARTRIDGE VALVES

■ Cavity Details

CAVITY CODE # : YC2A

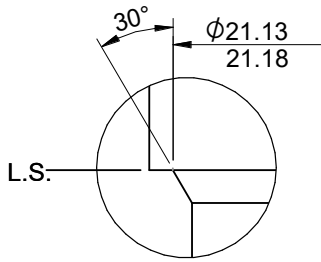


NOTE:

1. SCALE: NTS
2. All dimensions are in "mm"
3. Above drawing to be referred for tolerance and linear dimensions from origin, for depth and other dimension refer manufacturing drawings or hole table in respective drawings.
4. If in doubt please ask.

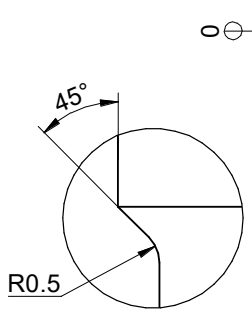
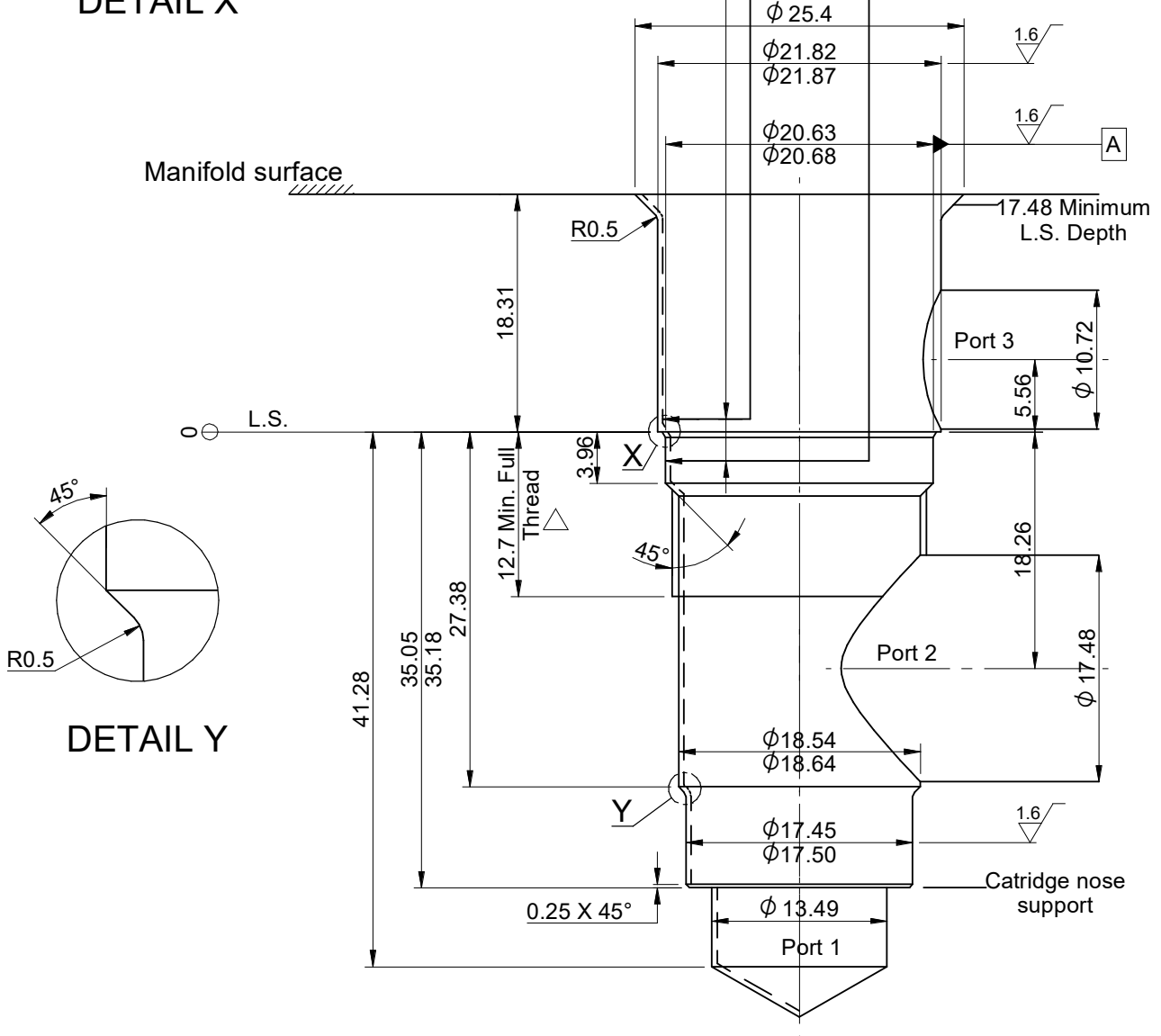
Ⓞ0.05 A THREAD AND ALL DIAMETERS

CAVITY CODE # : YC11A



DETAIL X

△ M20X1.5 - 6H ISO (METRIC) THREAD
19.026/19.216 PITCH DIA



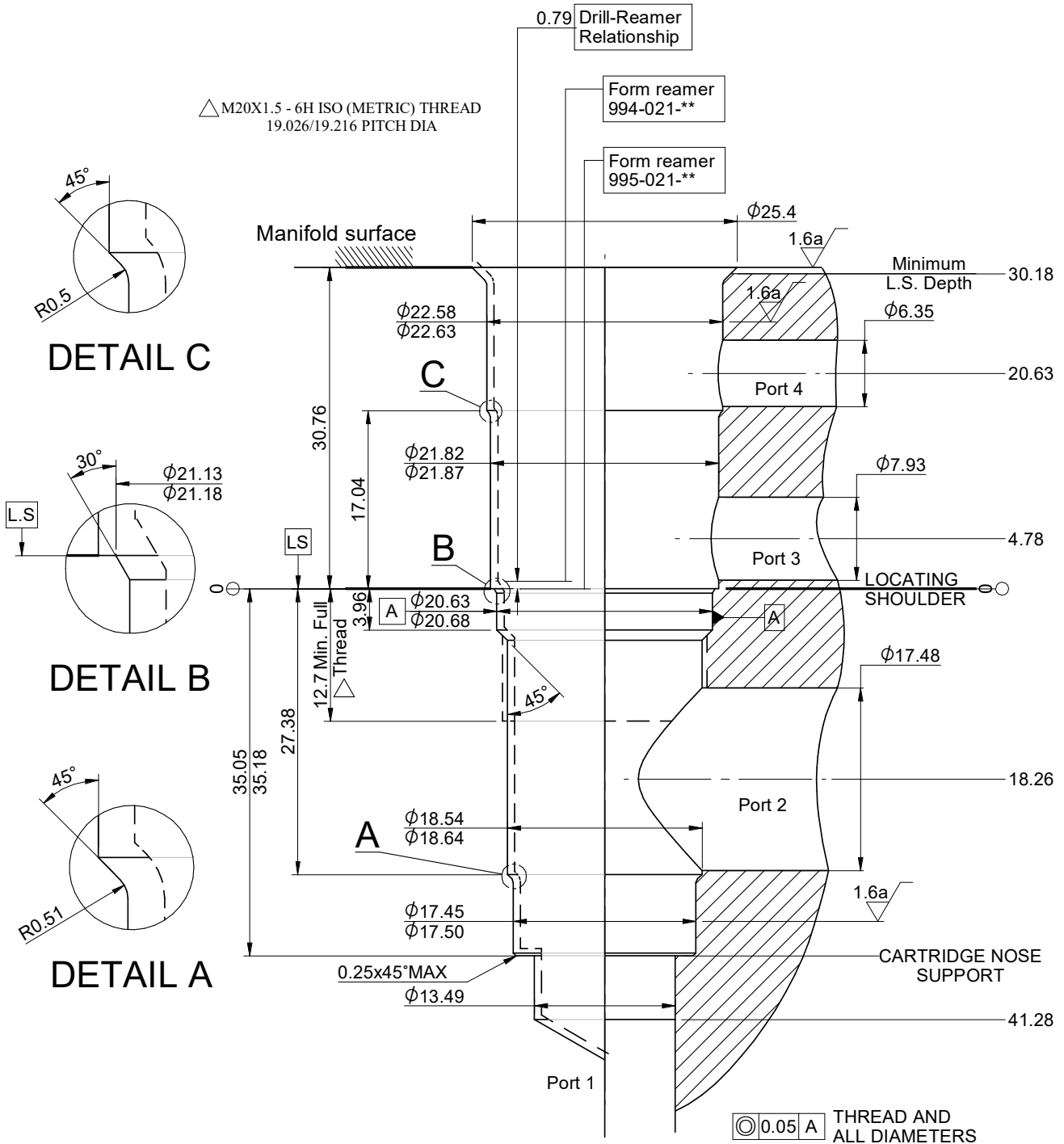
DETAIL Y

Ⓞ 0.05 A THREAD AND ALL DIAMETERS

NOTE:

1. SCALE: NTS
2. All dimensions are in "mm"
3. Above drawing to be referred for tolerance and linear dimensions from origin, for depth and other dimension refer manufacturing drawings or hole table in respective drawings.
4. If in doubt please ask.

CAVITY CODE # : YC21A



NOTE:

1. SCALE: NTS
2. All dimensions are in "mm"
3. Above drawing to be referred for tolerance and linear dimensions from origin, for depth and other dimension refer manufacturing drawings or hole table in respective drawings.
4. If in doubt please ask.