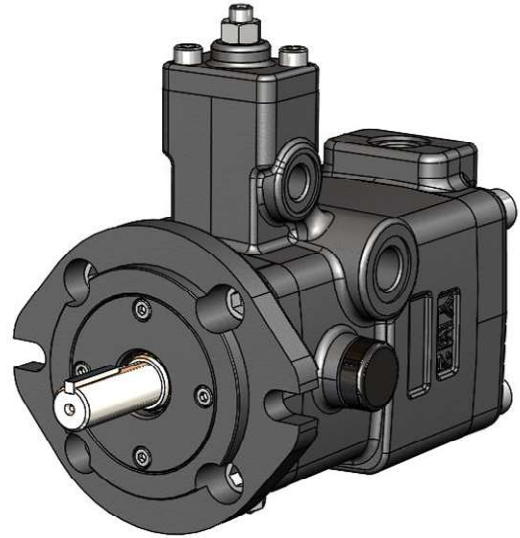


PVV-10 + PVR1T DOUBLE PUMP

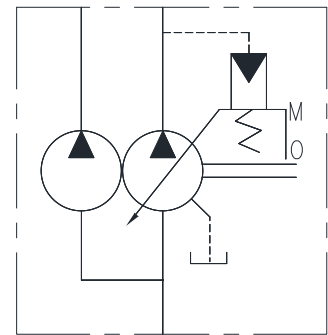
These double pumps consists of one PVV-10 and PVR1T series pumps (Variable & Fixed displacement Pump) combines in tandem with a single housing and drive by a single shaft . Fluid delivered from the two separate parts can be either separate (or) common circuit.



Specifications

Model Number	Geometric Displacement cm ³ /rev.	Oper. Pressure Kgf/cm ²	Shaft Speed r/min.		Mass Kg.
			Min.	Max.	
PVV-10-*	8.0	10 ~ 70	800	1800	10
PVR1T – 4	3.5	125			
PVR1T – 6	5.5	175			
PVR1T – 8	7.8				
PVR1T – 10	8.7				
PVR1T – 12	11.5				
PVR1T – 15	13.8				
PVR1T – 17	16.0				

Graphic Symbol



Model Number Designation

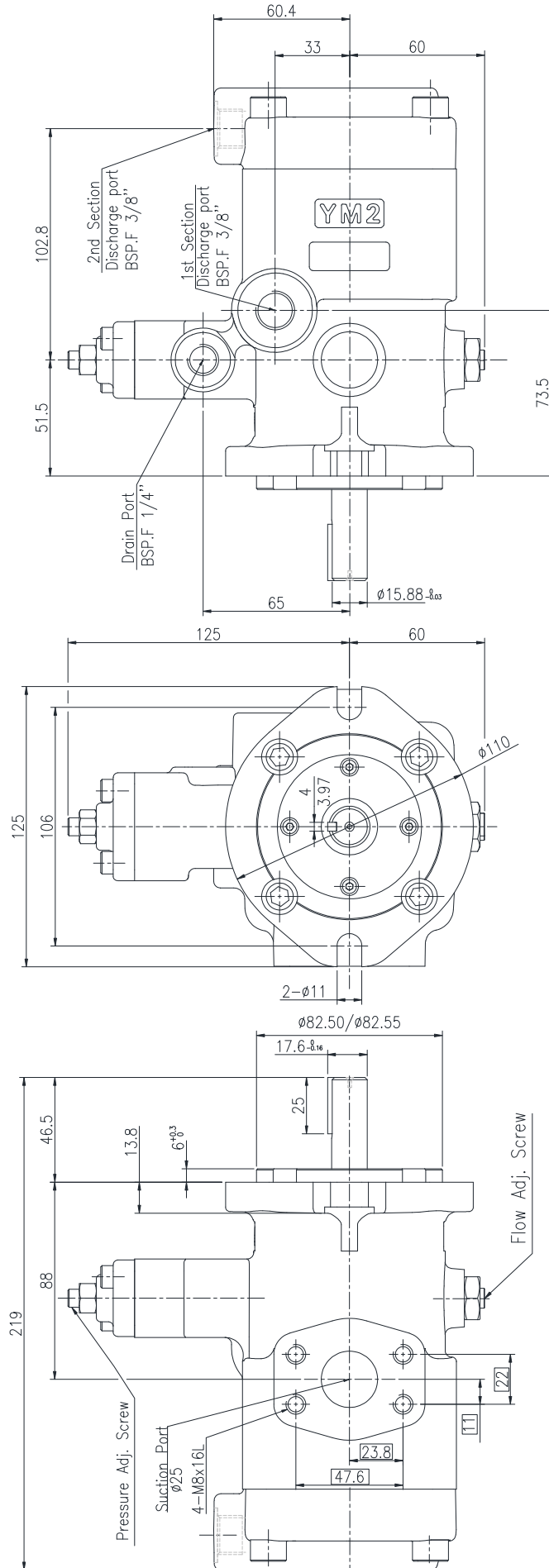
PVV10+ PVR1T	- 10	- C	- 4	- F	- L	-R	A	L	- 10	80
Series Number	Delivery at Unloading L/min. @ 1500 r/min.	Pressure Adj. Range Kgf/cm ²	Normal Displacement	Mounting	Direction of Rotation (As viewed from shaft end)	1 st Section Discharge Port Position	2 nd Section Discharge Port Position	Suction Port Position	Design Number*	Design Std.
						Viewed From Shaft End				
PVV10 + PVR1T	10 : 12	C : 30 ~ 70	4, 6, 8, 10, 12, 15, 17	F: Flange Type	L: Counter Clockwise	R: Right	A : Normal (Upwards) B : Bottom R : Right L : Left	L : Left	10	80

* Design numbers subject to change, but installation dimensions remain as shown below.

PVV10+PVR1T-10-C-※-F-L-R-※-L-1080

- Flange Mounting (2 Bolts)

DIMENSIONS IN MILLIMETRES



Drive Train Pump

Spare Parts List

List Of Seals

Sl. No.	Name Of Parts	Part No.	Model Numbers
			Qty.
			PVV-10+ PVR1T ※※
1	Oil Seal	ISPD 25388	1
2	O-Ring	SO-NB-G80	1
3		SO-NB-G60	1
4		SO-NB-G35	1
5		SO-NB-A032	1
6		SO-NB-A023	1
7		PKH4-0336-0	1
8		SO-NA-P10	2
9	SO-NA-P20	1	

Note: When ordering the seals, please specify the seal kit number from the table below.

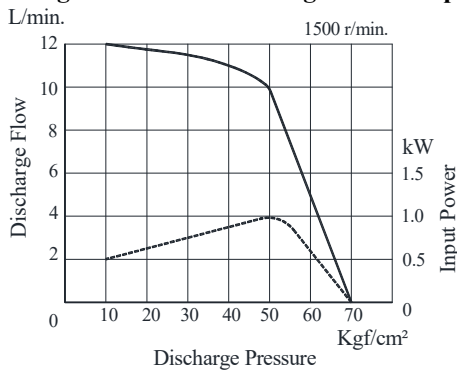
List Of Seal Kits

Pump Model Numbers	Seal Kit Numbers
PVV-10+PVR1T-10-C-※-F- -L-R-※-L-1080	KS-PVV-10+PVR1T 1080

Typical Performance Characteristics

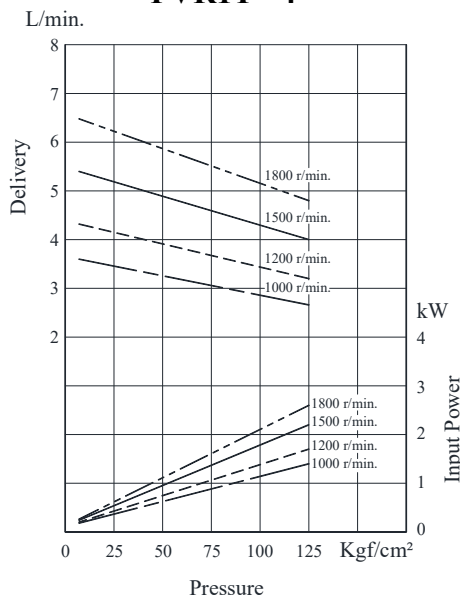
Hydraulic Fluid: Viscosity 32 cSt.

Discharge Pressure – Discharge Flow – Input Power

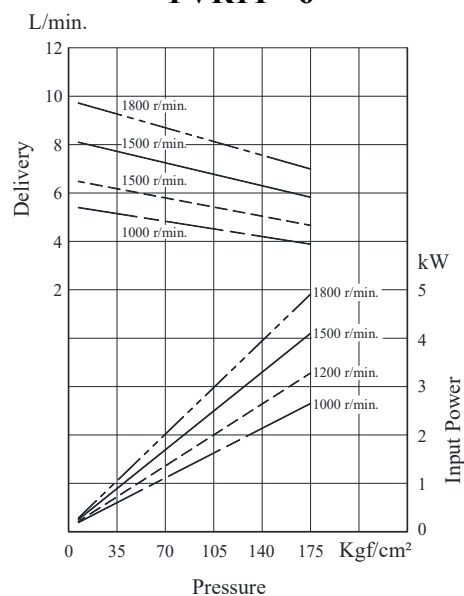


Typical Pump Characteristics Oil Viscosity 32 cSt [ISO VG 32, Temp 50⁰ C]

PVR1T - 4

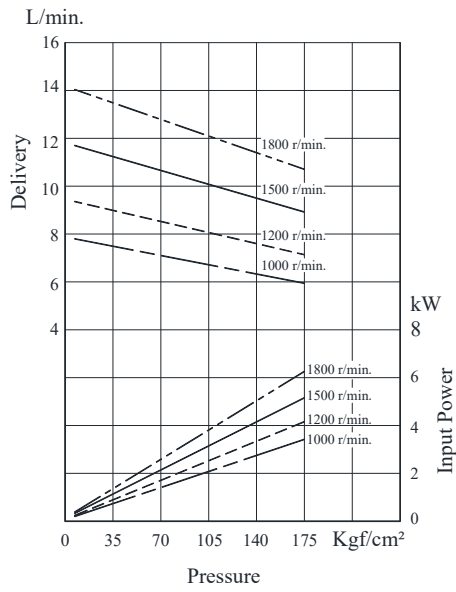


PVR1T - 6

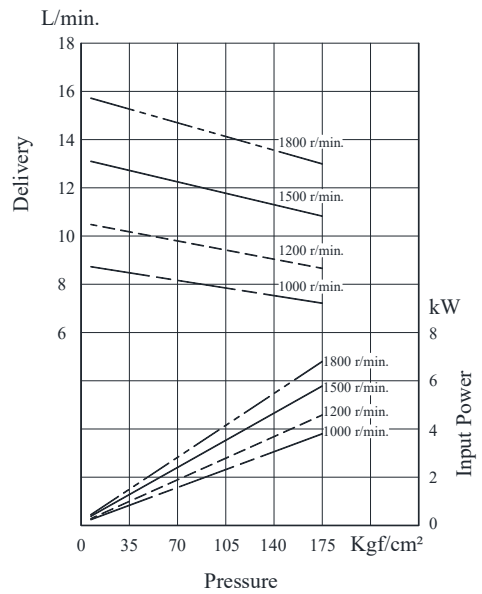


Typical Pump Characteristics Oil Viscosity 32 cSt [ISO VG 32, Temp 50⁰ C]

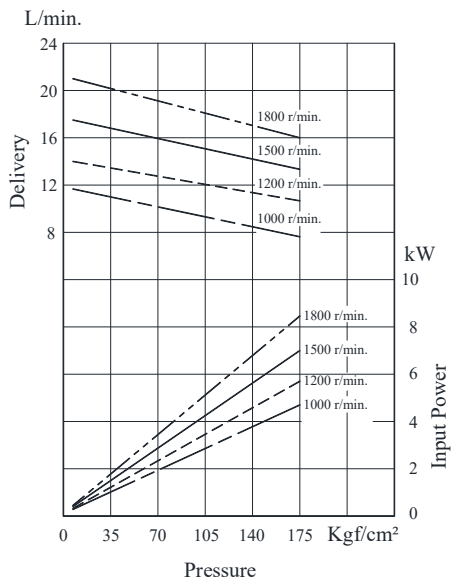
● PVR1T - 8



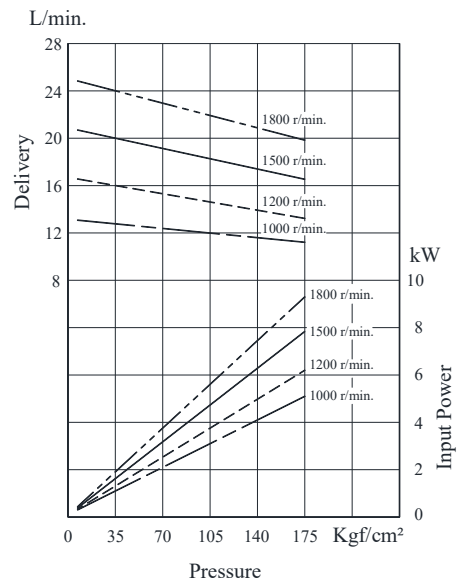
● PVR1T - 10



● PVR1T - 12



● PVR1T - 15



● PVR1T - 17

