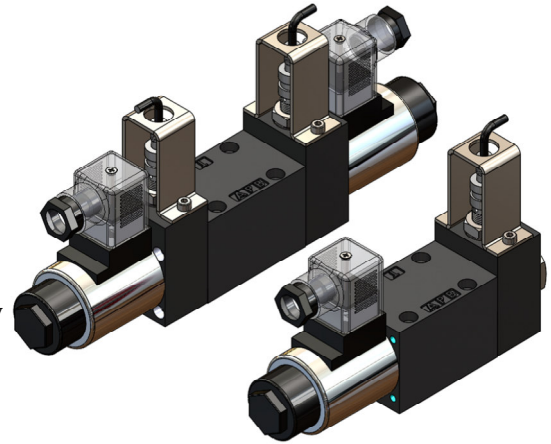


Solenoid Operated DC Valves With Monitoring Switch , YDS Series

- It can monitor the spool position shifting correctly.
- It is adopted with no-contact parts and zero-torn part with long life.
- It can choose PNP output and directly check the function with little hysteresis.
- There is no special requirement for the water level in the fluid and the pollution.
- Dust-proof and water-proof level is IP 65. It will not be interfered by the external magnetic field.

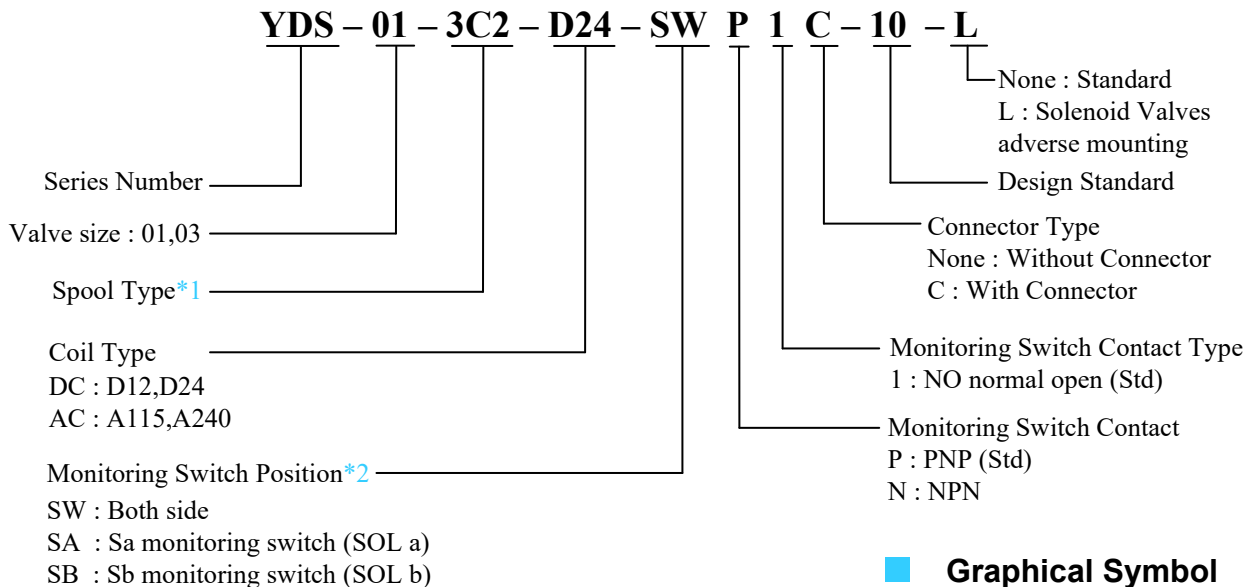


It is available for injection machines, machine tools and the other hydraulic machines that need to improve the safety.

Specification

Valve Type	Model Numbers	Max. Flow* L/min.	Max. Operating Pressure Kgf/cm ²	Max. T-Line Back Pressure Kgf/cm ²	Max. Changeover Frequency Cycles/min.	Mass Kg
Standard	YDS-01-3C※-※-10	80	315 {Spool Type 60 Only 250}	160	300 {R Type Sol. Only 120}	3
	YDS-01-2B※-※-10					2.4
Standard	YDS-03-3C※-※-10	160	350 {Spool Type 60 Only 250}	210	120	7.2
	YDS-03-2B※-※-10					5.6

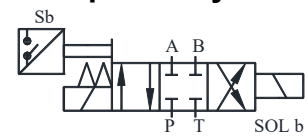
Model Number Designation



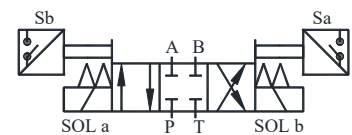
1. Flow rate is as same as Y-01--10 & YD-03-*-10 For other details, please refer EI-V4-0124 & EI-V4-0227.

*2. The monitoring switch (Sa) of SOL a is at B port.
The monitoring switch (Sb) of SOL b is at A port.

Graphical Symbol



2B2-*-SBP1C Type

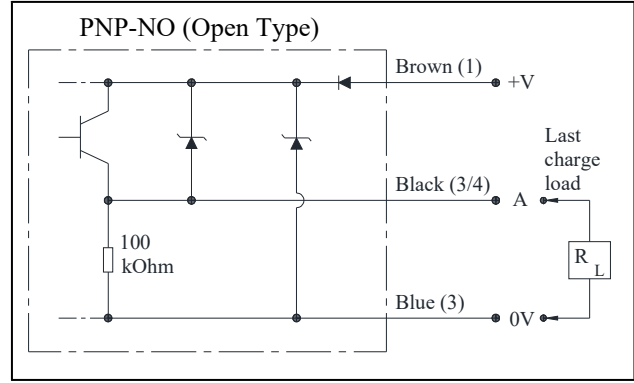


3C2-*-SWP1C Type

NOTE : This series of valves can not be mounted in vertical position.

Monitoring Switch and Wiring Diagrams

Item	Specification
Supply Voltage Range	10~30 VDC
Max. Output Current	200 mA (32 VDC max.)
Switching Frequency	600 Hz
Ambient Temperature Range	-25~70 °C
Degree of Protection	IP 67



IP65-equivalent dust and water resistant

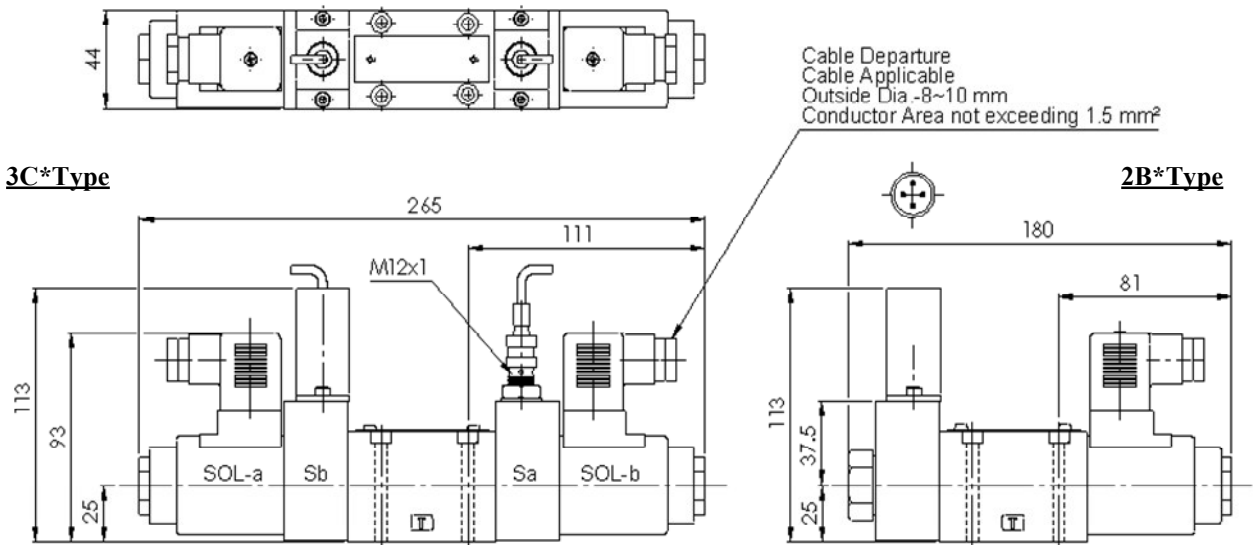
On request can be customized up to IP68/69.
Consult YUKEN for more details.

Mounting Bolts

Valve Model No.	Soc. Hd. Cap Screw	Qty.	Mounting Bolt Kit Number
YDS-01	M5 x 45 Lg.	4	BKDSG-01-50
YDS-03	M6 x 35 Lg.	4	BKDSG-03-20

YDS-01 (Mounting Surface: ISO 4401-AB-03-4-A Standard)

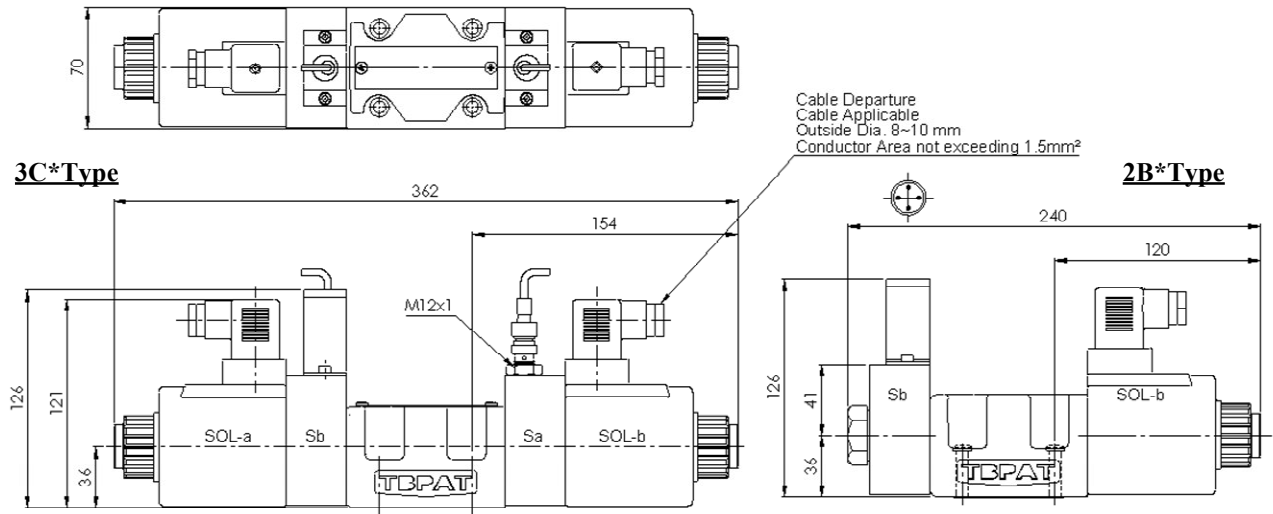
DIMENSIONS IN MILLIMETRES



NOTE : For dimensions of valves & mounting surface, please refer Y-01-*-10 Valve (EI-V4-0124) .

■ YDS-03 (Mounting Surface: ISO 4401-AC-05-4-A Standard)

DIMENSIONS IN MILLIMETRES



NOTE : For dimensions of valves & mounting surface, please refer YD-03-*-10 Valve (EI-V4-0227) .