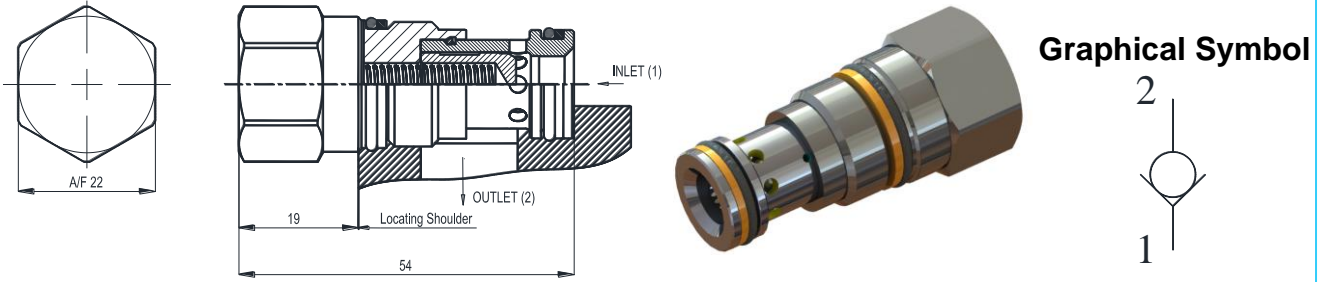


Cartridge Check Valve

These valves allow free flow in one direction and prevent flow in the reverse direction. Cracking pressure specified is the pressure required to open the valve and allow free flow.



Specifications

Model Number	Rated Flow * L/min.	Max. Operating Pressure Kgf/cm ²	Cracking Pressure Kgf/cm ²	Mass Kg.
YCX80-AN	80	350	0.3 1.0 2.0	0.10

* Rated flow is the approximate flow rate, when there is a free flow pressure drop of maximum 4 Kgf/cm², the fluid has a specific gravity of 0.85, a kinematic viscosity of 20cSt, and the cracking pressure is 0.3 Kgf/cm².

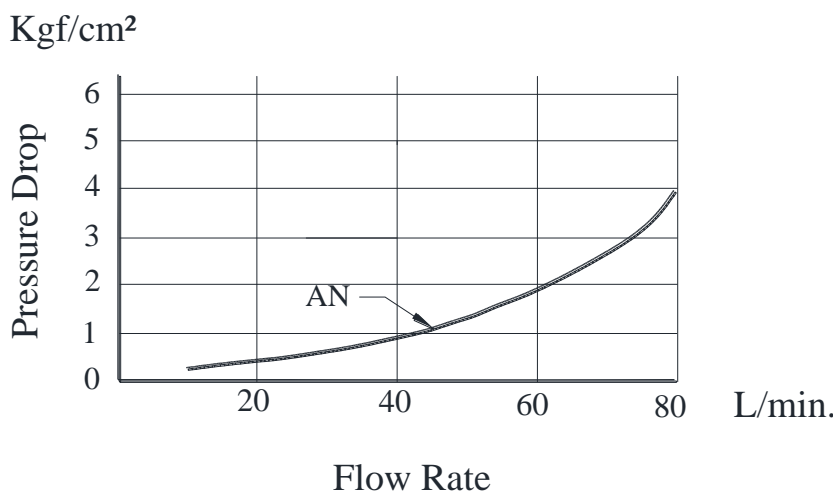
Model Number Designation

YCX	80	-A	N
Series Number	Valve Size	Cracking Pressure Kgf/cm ²	Seal Material
YCX: Cartridge Check Valve	80	A : 0.3 B : 1.0 C : 2.0	N: Nitrile V: Viton

DIMENSIONS IN
MILLIMETRES

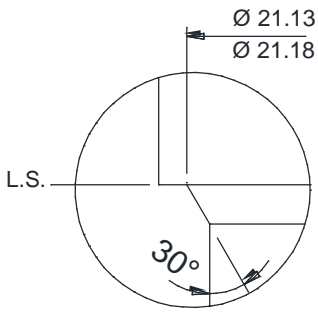
Pressure Drop

Hydraulic fluid : Viscosity 30 cSt (141 SSU), Specific Gravity 0.850

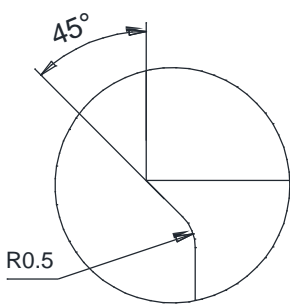
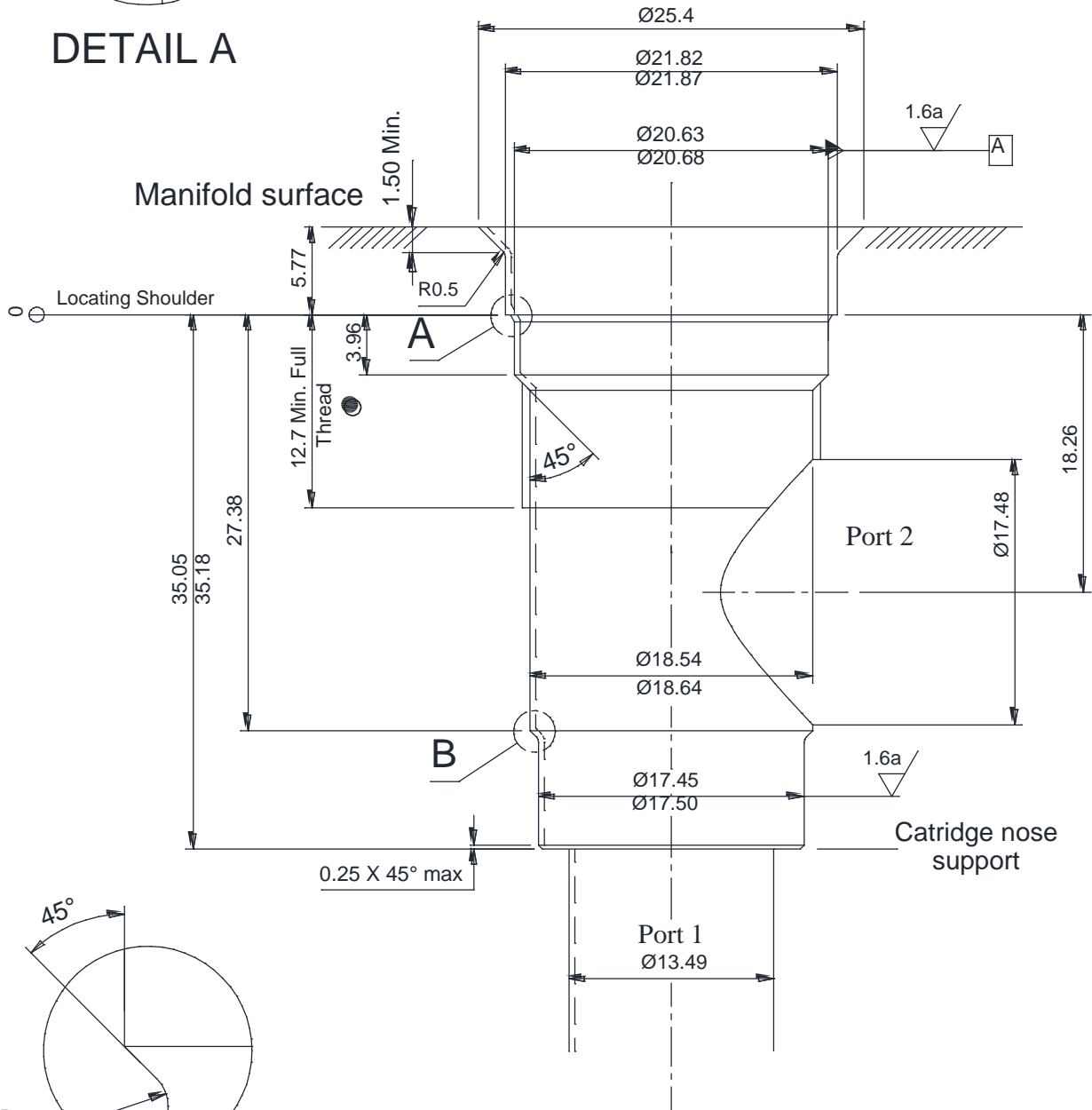


DIMENSIONS IN MILLIMETRES

Cavity Details



DETAIL A



DETAIL B

● M20X1.5 - 6H ISO (METRIC) THREAD
19.026/19.216 PITCH DIA

Cartridge Check Valve