

### Throttle and Check Valve

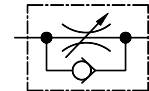
The YTCT-03/06 adjustable one-way restrictors are designed for applications where fluid oil flow regulation without pressure compensation is required. They can be used whenever the working load remains relatively constant. Flow regulation is for one direction only. When the flow is reversed the valve opens against a spring and flow passes through at near zero pressure. These valves therefore cannot be used as isolating valves.



### Specifications

Model Numbers	Rated Flow L/min.	Max. Operating Pressure Kgf/cm <sup>2</sup>	Mass Kg.
YTCT-03-1080	35	210	0.6
YTCT-06-1080	76		1.2

Graphic Symbol



Rated flow stands for approximate flow rate when the pressure drop between inlet and outlet ports of the valve is fully opened condition becomes 5 Kgf/cm<sup>2</sup> maximum at fluid's specific gravity of 0.85 and kinematic viscosity of 20 cSt (100SSU)

### Model Number Designation

YTC	T	-03	-10	80
Series Numbers	Type of Connection	Valve Size	Design Number *1	Design Standard
YTC: Throttle & Check Valve	T: Threaded Connection	03	10	80
		06		

\*1 Design numbers subjected to change, but installation dimensions remains as shown.

### Spare Parts List

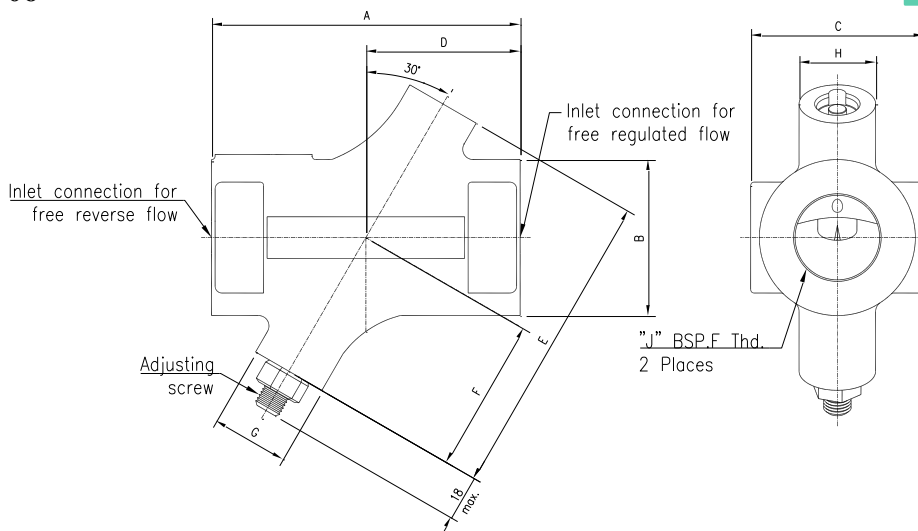
#### List of Seals

Sl. No.	Name of Parts	Part Numbers	YTCT-03	YTCT-06
1	O-Ring	SO-NB-P6	1	1
2	O-Ring	SO-NB-P9	1	1

Note : When ordering the seals, please specify the seal kit number KS-YTCT-03/06-1080

#### YTCT-03-1080 06

DIMENSIONS IN MILLIMETRES



Model No.	A	B	C	D	E	F	G	H	J
YTCT-03-1080	71	32	34	36	89	44	22	22	3/8 BSP.F
YTCT-06-1080	89	45	50	45		45			3/4 BSP.F