

YUAC Series Piston Accumulator

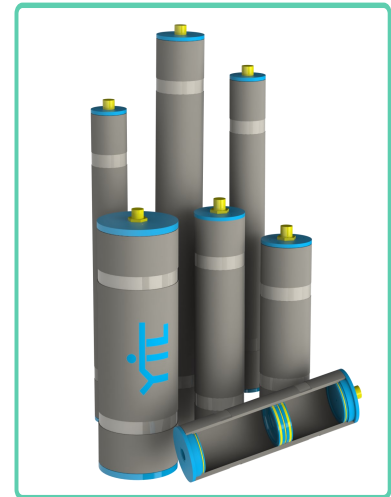
These piston accumulator is used mainly in hydraulic systems for storage of fluid under pressure, absorbing hydraulic shocks, dampening pulsation, compensating volume and pressure.

This simple, compact design of the piston accumulator ensures dependable performance, maximum efficiency and long service

Features

- High degree of reliability.
- Low friction.
- Suitable for petroleum and mineral based oils.
- Body is made out of low carbon steel.
- Piston is made out of aluminum.
- High quality sealing by NBR seals.

Specifications



Graphical symbol



Model Numbers	Max. Working Pressure(WP) kgf/cm ²	Max. Test Pressure kgf/cm ²	Max. Operating Temp. °C
YUAC-*-160-PT-20	Up to 160	1.5 x WP	-30 ~ +120*
YUAC-*-210-PT-20	Up to 210		
YUAC-*-250-PT-20	Up to 250		

* - Up to 80°C standard NBR seals. For higher temperature consult YIL for Viton seals.

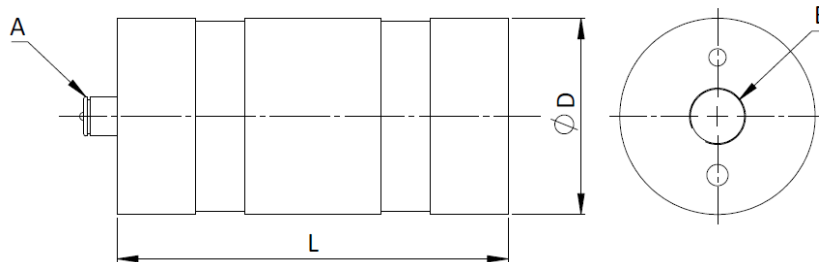
Model Number Designation

YUAC	-40	-160	-PT	-20
Series Number	Capacity Liters	Working Pressure kgf/cm ²	Type	Design Number
YUAC : Piston Accumulator	0.5 : 0.5	160 : 160	PT : Piston	20
	0.7 : 0.7			
	01 : 1			
	02 : 2			
	03 : 3			
	04 : 4			
	05 : 5	210 : 210		
	06 : 6			
	08 : 8			
	10 : 10	210 : 210 250 : 250		
	15 : 15			
	20 : 20			
	25 : 25			
	30 : 30			
	40 : 40			
50 : 50				
60 : 60				
80 : 80				

160
 ■ YUAC-*-210 -PT-20
 250

Dimensions in
 Millimeters

Model	A Port Size - Gas Charging side	B Port Size - Fluid side	ØD Outer Diameter	L Length 160/210 bar	L Length 250 bar	
YUAC-0.5-*-PT-20	G 1/4"	G 1 1/4"	115	200	-	
YUAC-0.7-*-PT-20				225		
YUAC-01-*-PT-20				270		
YUAC-02-*-PT-20				390		
YUAC-03-*-PT-20				520		
YUAC-04-*-PT-20				650		
YUAC-05-*-PT-20				800		
YUAC-06-*-PT-20				620		
YUAC-08-*-PT-20		700				
YUAC-10-*-PT-20		780	790			
YUAC-15-*-PT-20		980	990			
YUAC-20-*-PT-20		1170	1200			
YUAC-25-*-PT-20		Rc 2"	210	1350		1390
YUAC-30-*-PT-20				1550		1590
YUAC-40-*-PT-20				1950		1990
YUAC-50-*-PT-20				2350		2370
YUAC-60-*-PT-20	2750			2790		
YUAC-80-*-PT-20	3550			3590		



Instructions

The system must be de-pressurized before installation or disassembling the piston accumulator and fluid gas side must be depressurized before disassembling the accumulator unit. If the piston is jammed due to contamination in the accumulator, only authorized technician should repair.

Only **Dry Industrial Nitrogen Gas** should be used to pre charge the accumulator, never use other gasses. Pre-charge the accumulator to the required pressure, in general piston accumulators are pre-charged to 5 bar lower than the minimum working pressure of the system. Pressure relief valve must be used very close to the accumulator and set at lower than the maximum working pressure. Use the suitable pre charging kit to fill the nitrogen gas in to the accumulator.

Position : Piston accumulator can be installed in any positions but vertical position is preferred to get higher performance (gas port is on upper side & fluid port is at bottom side of accumulator).

Ordering Information

Example : Piston accumulator having a nominal volume of 50 liters and maximum working pressure of 160 kgf/cm² : **YUAC-50-210-PT-20**, Material Number : **88000000844**